



45 Anson Avenue, Calne, Wiltshire, SN11 8FY

£1,000 Per Month



- Two bedroom home
- Long term let
- Pets considered on application
- Two parking spaces
- Enclosed rear garden

Discover Calne: A Historic Wiltshire Town with Scenic Charm and Great Connectivity

Situated in the beautiful North Wiltshire countryside, Calne is a market town that combines rich history with modern-day living. With a sense of community and range of local amenities, Calne is an ideal place to call home.

Local Amenities and Lifestyle

Calne offers a town centre featuring independent shops, cafes, and traditional pubs. There's no shortage of green space, with the popular Castlefields Park and The Recreation Ground offering relaxing outdoor areas for picnics, dog walks and family time. For fitness and leisure, Calne Leisure Centre provides a gym, swimming pool and fitness classes for all ages.

THE PROPERTY

Blueleaf Property are delighted to offer this two bedroom semi detached home for a long term let.

The ground floor accommodation provides entrance hall, cloakroom room, understairs storage cupboard, kitchen and lounge with patio doors leading onto the rear garden. The first floor accommodation provides landing, bedroom one with en-suite shower room, a second bedroom and family bathroom.

The property further benefits from allocated parking for two cars to the front of the property, gas central heating (combination boiler), upvc double glazing throughout and an enclosed rear garden with patio, lawn, storage box and gated access.

The landlord would prefer a longer term let and is happy to accept pets on consideration.

All room measurements are approx:

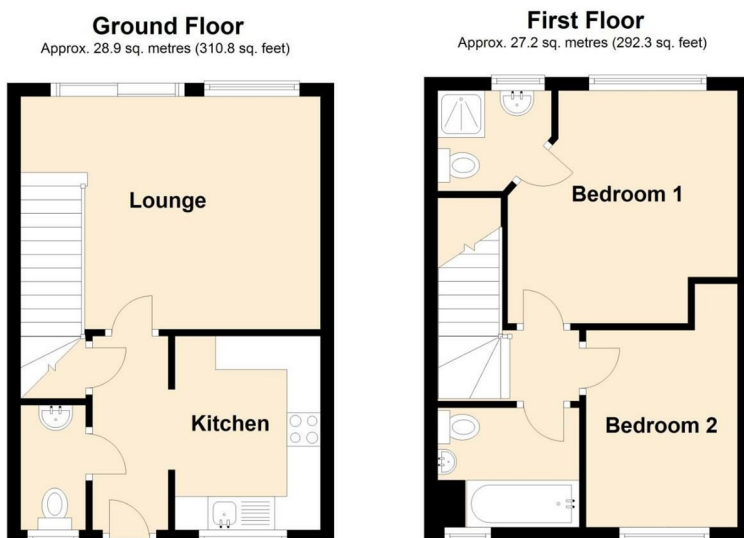
Kitchen: 2.89m x 2.17m

Lounge: 3.47m x 4.49m

Bedroom One: 2.66m ext 3.38m x 2.81m ext 3.5m

Bedroom Two: 2.90m ext 3.69m x 2.40m

SITUATION



Total area: approx. 56.0 sq. metres (603.1 sq. feet)

Directions

Office 4 Stockley Farm, Stockley, Wiltshire, SN11 0NT

Tel: 01225 839050 Email: hello@blueleafproperty.co.uk <https://www.blueleafproperty.co.uk>