



12 Beverley Close, Bowerhill, Melksham, Wiltshire, SN12 6UA

£995 Per Month

- Two bedroom house
- Upvc double glazing
- Garage & parking
- Council Tax - B (Wiltshire Council)
- Viewing Day - 6th June
- Gas central heating
- Garden with shed
- Pets are not considered
- EPC - D

THE PROPERTY

Blueleaf Property are delighted to offer this two bedroom home in Bowerhill, Melksham.

The ground floor accommodation comprises entrance porch, lounge & kitchen dining room with door onto the rear garden. The first floor accommodation comprises landing with airing cupboard, double bedroom with fitted wardrobes, a single bedroom and bathroom.

The property further benefits from front and rear gardens with side access and garden shed, single garage in block to rear of property, allocated parking for one car, gas central heating and upvc double glazing.

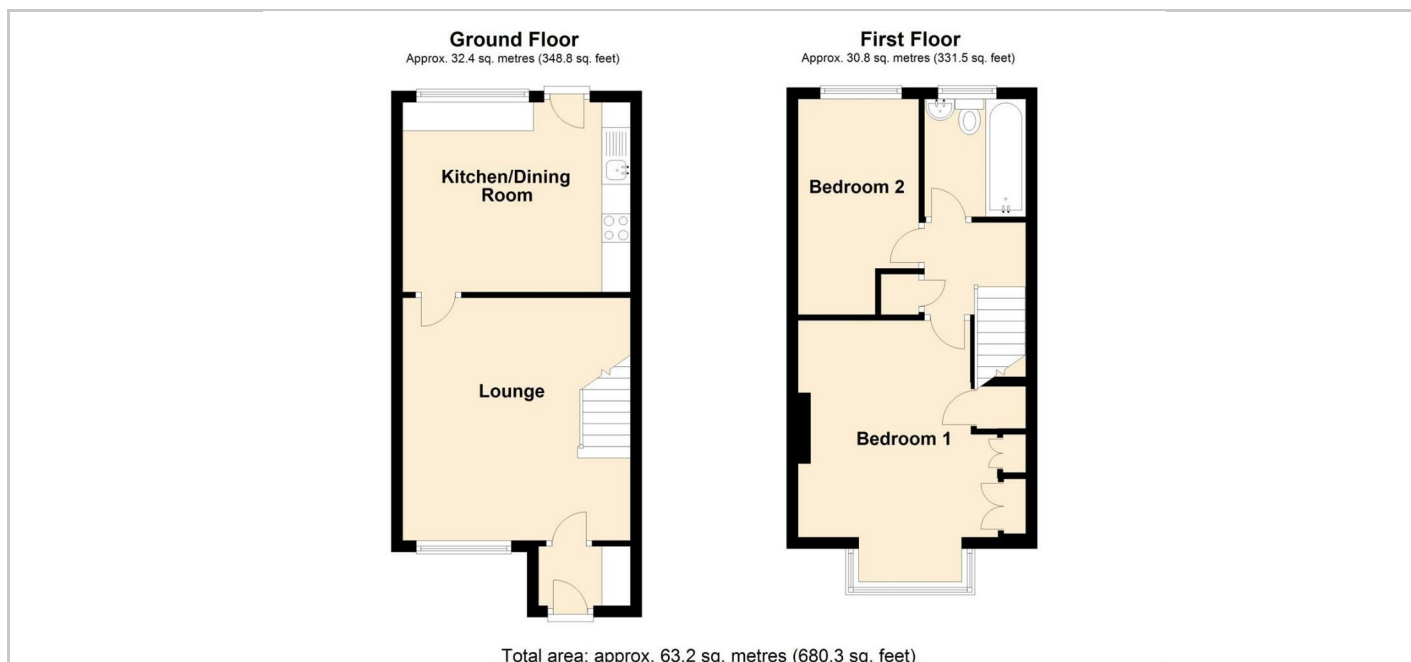
The landlord would prefer a longer term let. Pets are not considered.

Please note photos taken prior to current tenancy.

Viewing Day 6th June

All room measurements are approx
 Kitchen Dining Room: 3.99m x 3.32m
 Lounge: 3.99m x 4.25m
 Bedroom One: 3.01m ext 3.99m x 3.79m
 Bedroom Two: 2.96m ext 3.77m x 1.97m

SITUATION



Directions