



TO LET



2 Rumble Dene, Pewsham, SN15 3XE

£1,300 Per Month

- Three bedroom link detached house
- Available September 2024
- Long term let preferred
- Boot room
- Garage & Driveway
- Council Tax - Band C (Wiltshire Council)
- EPC - D

## THE PROPERTY

Blueleaf Property are delighted to offer this recently redecorated three bedroom linked detached home for let situated in Rumble Dene, Pewsham.

The ground floor accommodation comprises entrance hall, cloakroom, kitchen with side access door, lounge with patio doors onto the rear garden and understairs storage area, conservatory with patio doors onto the rear garden, boot room with internal access door to garage.

The first floor accommodation comprises, landing, storage cupboard and airing cupboard, three bedrooms with fitted wardrobes in the largest bedroom and bathroom.

The property further benefits from gas central heating, upvc double glazing, driveway parking and an enclosed rear garden with gated side access.

The landlord would prefer a longer term let. Pets are not considered.

All room measurements are approx;

Lounge: 3.38m x 4.91m

Kitchen: 3.15m x 2.41m

Conservatory: 2.11m x 4.23m

Boot Room: 1.48m x 2.51m

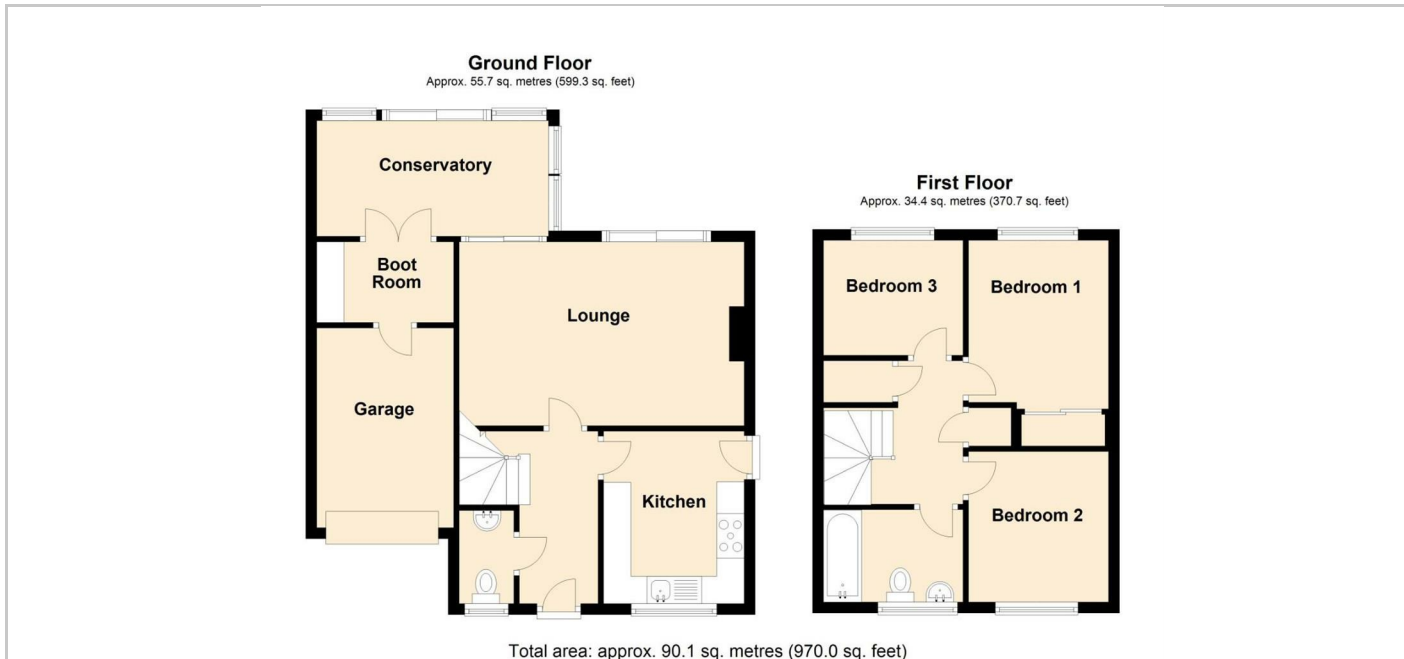
Garage: 2.51m x 3.65m

Bedroom One: 3.38m x 2.60m

Bedroom Two: 2.75m x 2.57m

Bedroom Three: 2.30m x 2.1m

Bathroom: 2.18m x 1.79m



## SITUATION

## Directions

Office 4 Stockley Farm, Stockley, Wiltshire, SN11 0NT

Tel: 01225 839050 Email: [hello@blueleafproperty.co.uk](mailto:hello@blueleafproperty.co.uk) <https://www.blueleafproperty.co.uk>