



18 Lapwing Road, Melksham, Wiltshire, SN12 7FJ

£1,200 Per Month

- Three bedroom home
- Available Now
- Longer term let preferred
- Pets are not considered
- Council Tax - C (Wiltshire Council)
- EPC - C

THE PROPERTY

Blueleaf Property are delighted to offer this three bedroom semi detached home on the Calne side of Melksham.

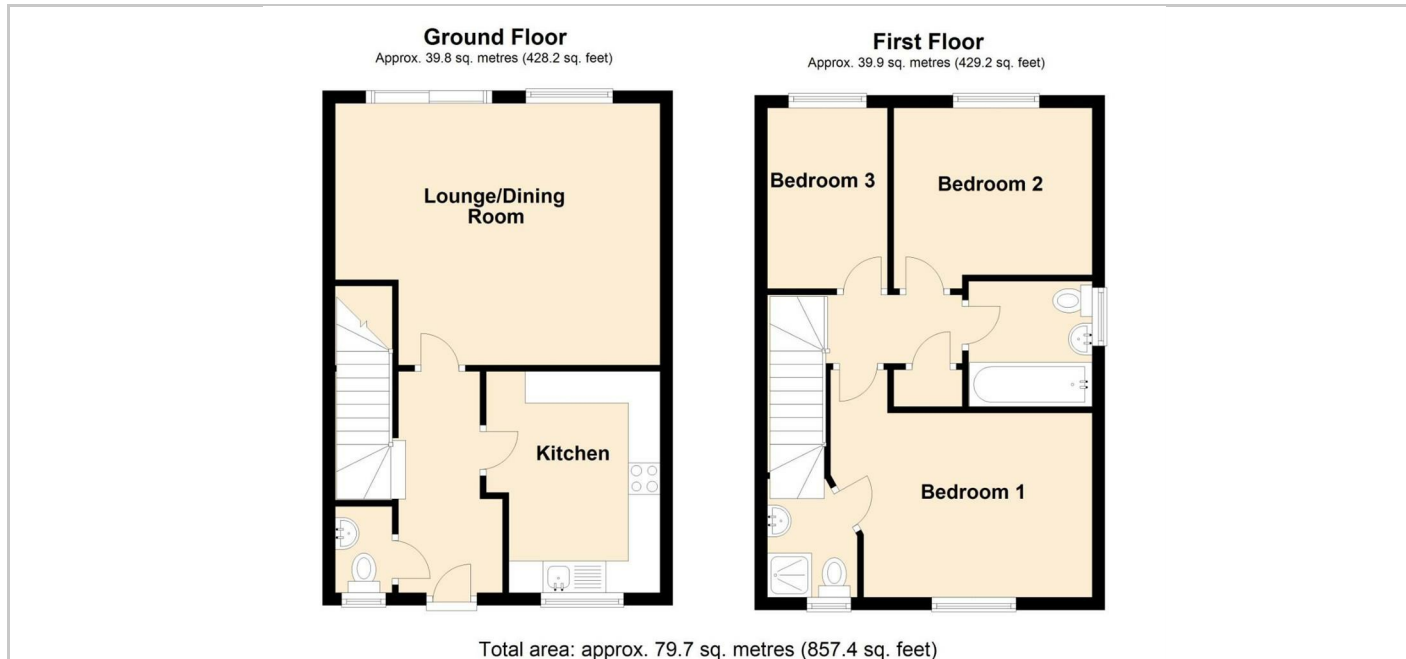
The ground floor accommodation comprises entrance hall, cloakroom, kitchen and lounge dining room with under stairs storage cupboard and patio doors onto the rear garden. The first floor accommodation comprises landing with storage cupboard, bedroom one with en-suite shower room, two further bedrooms and bathroom.

The property further benefits from gas central heating (combination boiler, upvc double glazing, an enclosed rear garden with gated access and single garage and parking for one car in front.

The landlord would prefer a longer term let. Pets are not considered.

All room measurements are approx;
 Kitchen: 3.5m x 2.39m ext 2.75m
 Lounge Dining Room: 4.14m x 3.78m ext 4.77m
 Bedroom One: 3.11m x 3.02m
 Bedroom Two: 2.83m x 2.65m
 Bedroom Three: 2.83m x 1.90m

SITUATION



Directions