



TO LET



17 Waverley Gardens, Melksham, Wiltshire, SN12 6AL

£1,200 Per Month

- Three bedroom family home
- Long term let
- Driveway parking for two cars
- Pets not accepted
- Enclosed rear gardens
- Council Tax - C (Wiltshire Council)
- EPC - D

THE PROPERTY

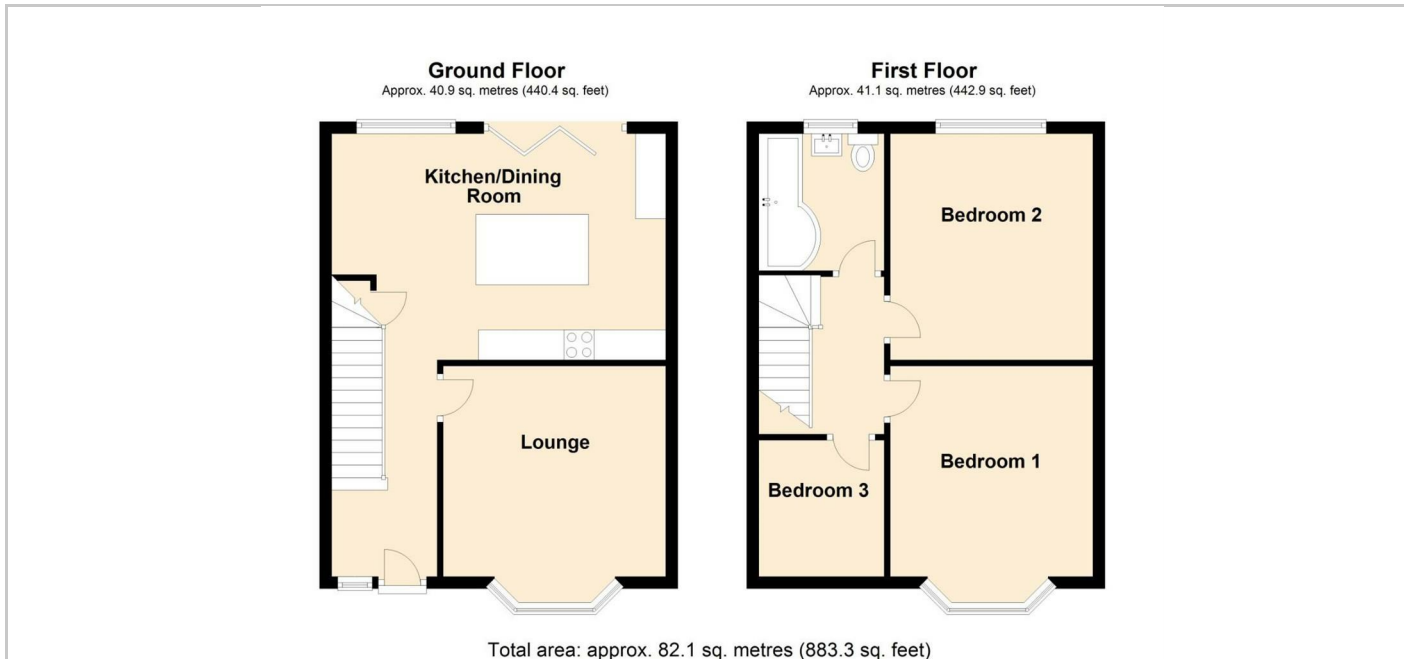
Blueleaf Property are delighted to offer this three bedroom semi detached home in Waverley Gardens, Melksham for a long term let.

The ground floor accommodation comprises entrance hall, lounge with bay window, under stairs storage cupboard and kitchen dining room with integrate dishwasher, fridge and freezer, washer dryer and triple bi-folding doors leading onto the rear garden. The first floor accommodation comprises landing, two double bedrooms, a single bedroom and family bathroom.

The property further benefits from driveway parking for two cars, a rear garden with patio, lawn and side access, gas central heating (combination boiler) and upvc double glazing.

The landlord would prefer a longer term let. Pets are not accepted. Please note photos were taen prior to current tenancy.

All room measurements are approx;
 Lounge: 3.69m x 3.49m
 Kitchen Dining Room: 5.54m x 3.75m
 Bedroom One: 3.36m x 3.56m
 Bedroom Two: 3.36m x 3.79m
 Bedroom Three: 2.55m x 2.14m
 Bathroom: 2.19m x 2.08m



SITUATION

Directions