



TO LET



4 Elliott Place, Melksham, SN12 8AP

£950

- Viewing day - 17th July 2024
- Request viewing via Rightmove please
- Two bedroom house
- Garage & parking
- Available September 2024
- Enclosed rear garden
- Council Tax - B (Wiltshire Council)
- EPC - C

THE PROPERTY

Blueleaf Property are delighted to offer this very well presented two bedroom house on the Chippenham side of Melksham.

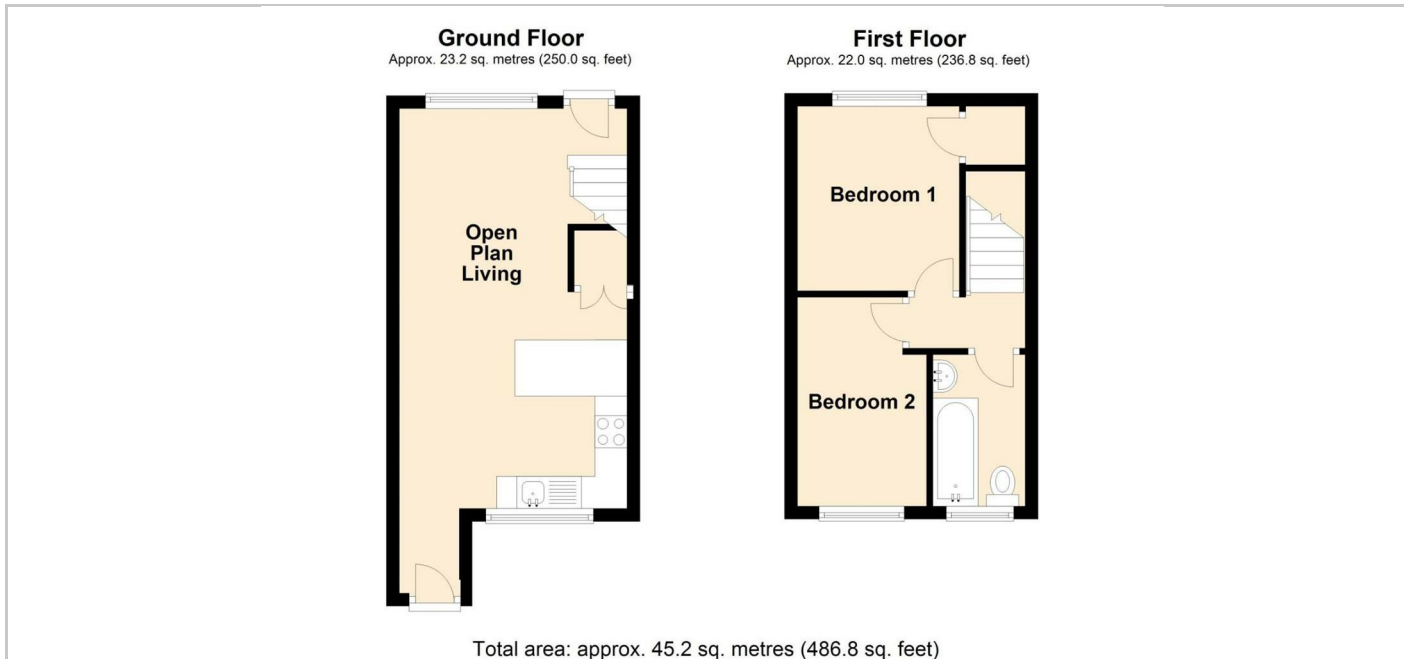
The ground floor accommodation comprises entrance hall, open plan living space with modern kitchen and under stairs storage cupboard and door onto the rear garden. The first floor accommodation comprises landing, bedroom with cupboard, second bedroom and bathroom.

The property further benefits from a single garage, parking for one car, gas central heating, upvc double glazing and an enclosed rear garden with patio and gated side access.

The landlord is looking to let the property for a period of circa three years. Pets are not considered.

All room measurements are approx;
 Entrance Hall: 0.92m x 1.31m
 Open plan living: 7.53m x 3.54m
 Bedroom One: 3.94m x 2.61m
 Bedroom Two: 3.51m x 2.01m
 Bathroom: 1.48m x 2.65m

SITUATION



Directions