



TO LET

33 Honeysuckle Close, Calne, Wiltshire, SN11 9TE

£1,150 PCM



- Three bedroom family home
- Long term let preferred
- Garage & driveway parking
- Enclosed rear garden
- Gas central heating
- Pets are not considered
- Council Tax - C (Wiltshire Council)
- EPC - C

## THE PROPERTY

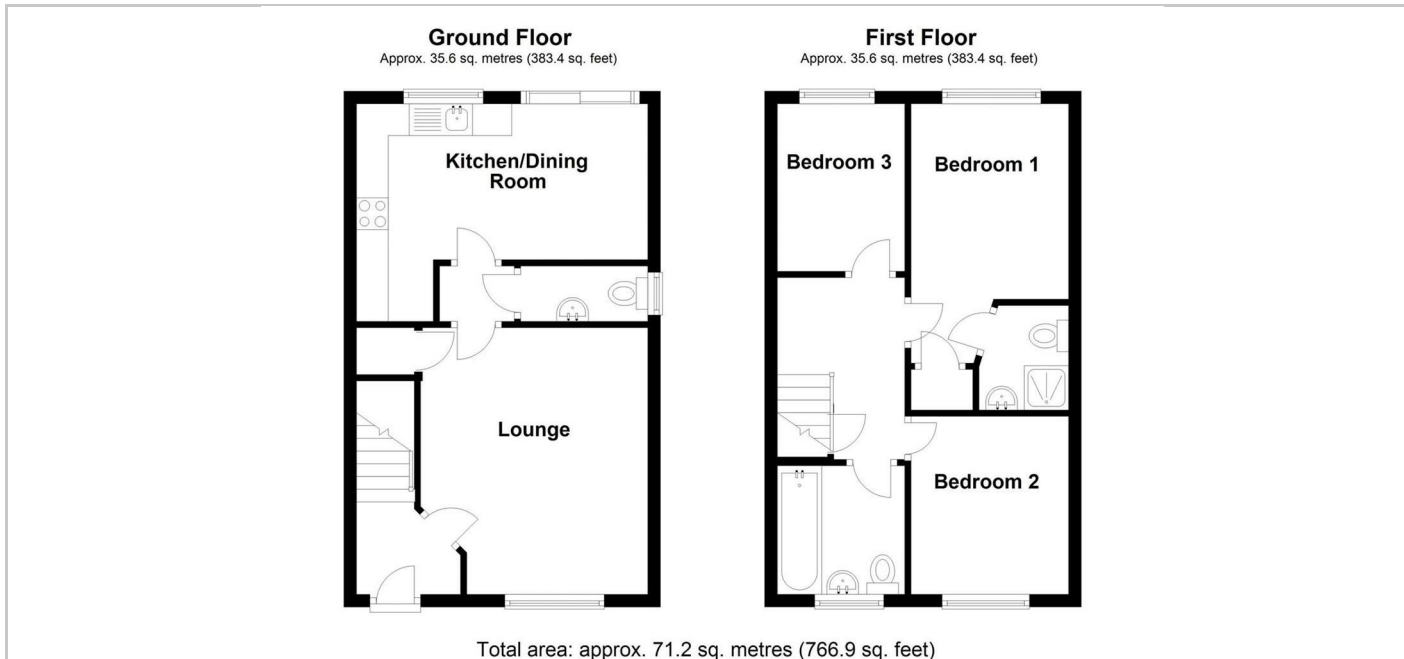
Blueleaf Property are delighted to offer this three bedroom family home which is available on a long term let.

The ground floor accommodation comprises entrance hall, lounge with under stairs cupboard, cloakroom and kitchen dining room with patio doors onto the rear garden. The first floor accommodation comprises landing with airing cupboard, main bedroom and en-suite shower room, a second double bedroom, a single bedroom and a family bathroom with a shower over the bath.

The property further benefits from upvc double glazing, gas central heating (combination boiler), an enclosed rear garden with access from the garage, a single garage with power and lighting and drive way parking.

The landlord would prefer a longer term tenancy. Pets are not considered.

All room measurements are approx;  
 Lounge: 2.86m ext 3.62m x 2.84m ext 4.21m  
 Kitchen Dining Room: 4.6m x 2.46m ext 3.43m  
 Cloakroom: 2.07m x 1m  
 Bedroom One: 2.53m x 3.08m ext 4.09m  
 Bedroom Two: 2.99m x 2.63m  
 Bedroom Three: 2.63m x 2.02m



## SITUATION

## Directions