



TO LET



1 West View, Stockley, SN11 0NP

£1,200

- Three bedroom village property
- Parking for two vehicles
- Recently refurbished
- Council Tax - D (Wiltshire Council)
- Longer term let preferred
- Pets considered on application
- Courtyard garden with summer house
- EPC - TBC

THE PROPERTY

Blueleaf Property are delighted to offer this recently refurbished three bedroom home in the village of Stockley near Calne.

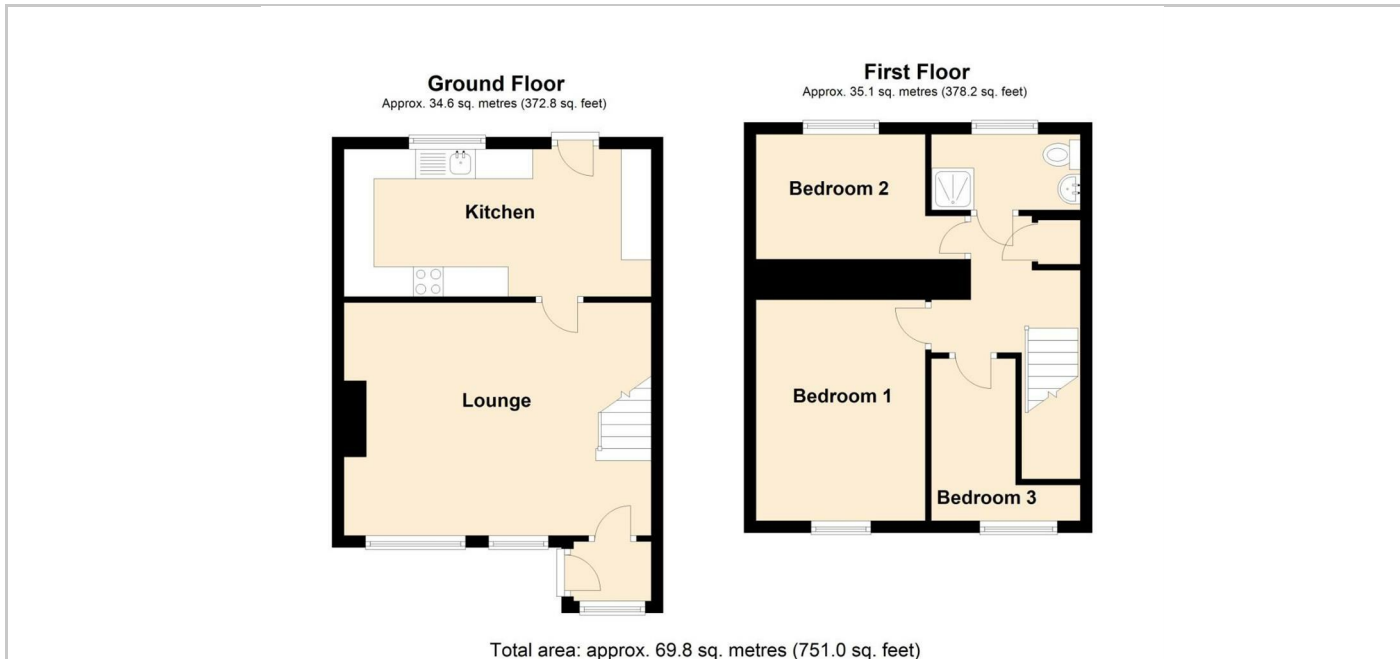
The ground floor accommodation comprises entrance hall, lounge with feature fireplace and stairs leading to first floor and kitchen with door onto rear courtyard garden. The first floor accommodation comprises landing, three bedrooms and shower room.

The property further benefits from oil central heating, upvc double glazing, parking for two vehicles in a yard to the rear of the property a front courtyard garden and rear courtyard garden with summer house.

The landlord would prefer a longer term let. Pets considered on application

All room measurements are approx
 Lounge: 5.14m x 3.9m
 Kitchen: 5.15m x 2.47m
 Bedroom One: 3.7m x 2.84m
 Bedroom Two: 2.84m ext 3.5m x 2.09m
 Bedroom Three: 1.41m ext 2.5m x 2.72m

SITUATION



Directions