



TO LET

22 Sherwood Avenue, Melksham, Wiltshire, SN12 7HL

£1,150 Per Month

- Detached bungalow
- Driveway parking
- Conservatory
- EPC - D
- Very well presented throughout
- Integral garage with electric rolled door
- Pets are not considered
- Council Tax - C (Wiltshire Council)

THE PROPERTY

Blueleaf Property are delighted to offer this two bedroom detached bungalow in Sherwood Avenue, Melksham.

The accommodation comprises entrance hall, integral garage with electric roller door and internal access door, lounge, kitchen dining room with integrated fridge, freezer and dishwasher, conservatory and two double bedrooms.

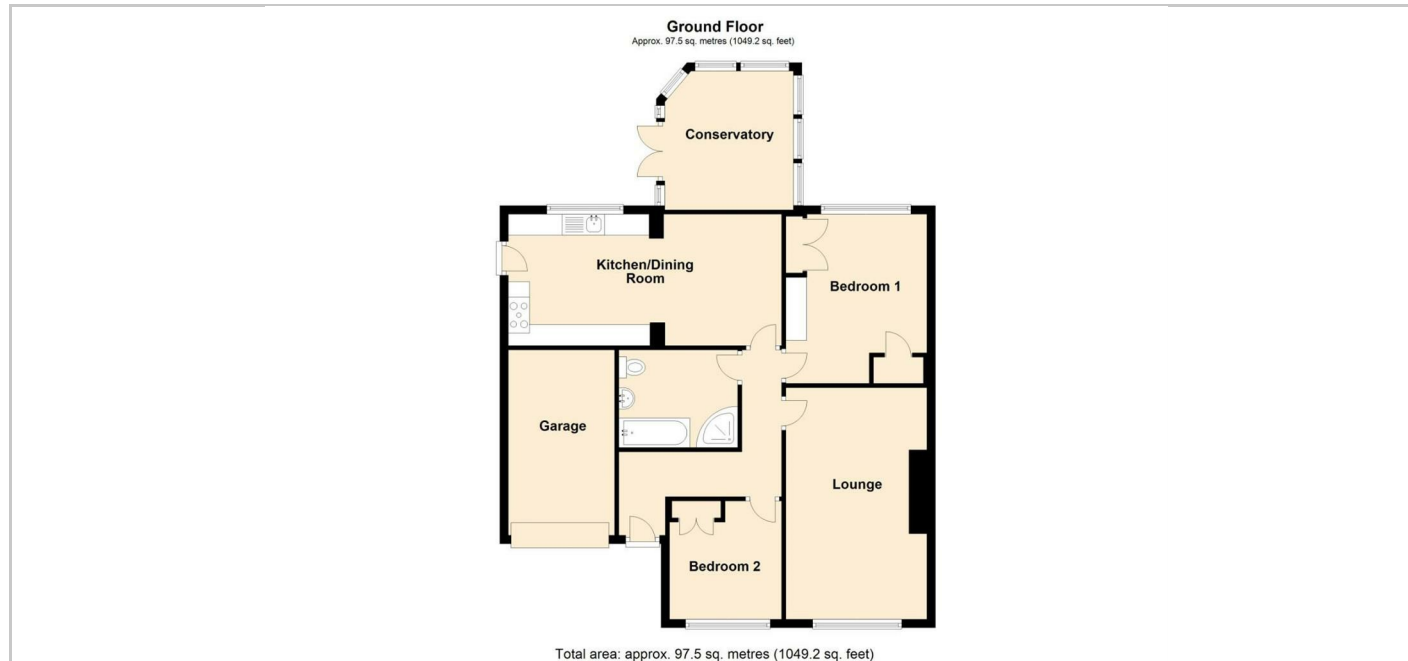
The property further benefits from driveway parking for multiple vehicles, side and rear gardens with lawn, patio, raised beds and a shed, upvc double glazing throughout and gas central heating from a new combination boiler.

The landlord would prefer a longer term tenancy. Pets are not considered. Please note photos were taken prior to current tenancy.

The property can come either part furnished or unfurnished.

All room measurements are approx;
 Lounge: 3.34m x 5.48m
 Kitchen Dining Room: 3.10m x 6.47m
 Conservatory: 3.32m x 3.04m
 Bedroom One: 4m x 3.34m
 Bedroom Two: 2.79m x 2.65m
 Garage: 2.38m x 4.39m

SITUATION



Directions