



10 Chalfield Crescent, Melksham, Wiltshire, SN12 7BU

**£1,050 PCM**

- Three bedroom house
- Driveway parking for one vehicle
- Available mid April
- Council Tax - B (Wiltshire Council)
- Long term let preferred
- Enclosed rear garden with shed
- EPC - D

## THE PROPERTY

Blueleaf Property are delighted to offer this three bedroom home.

The ground floor accommodation comprises entrance porch, entrance hall with under stairs cupboard, lounge and kitchen dining room with patio doors onto the rear garden. The first floor accommodation comprise landing, main bedroom with built in cupboard, second double bedroom, a single bedroom and bathroom.

The property further benefits from gas central heating (combination boiler), Upvc double glazing, driveway parking and an enclosed rear garden.

The landlord would prefer a longer term tenancy. Pets are not consider.

All room measurements are approx;

Lounge: 4.15m x 3.62m

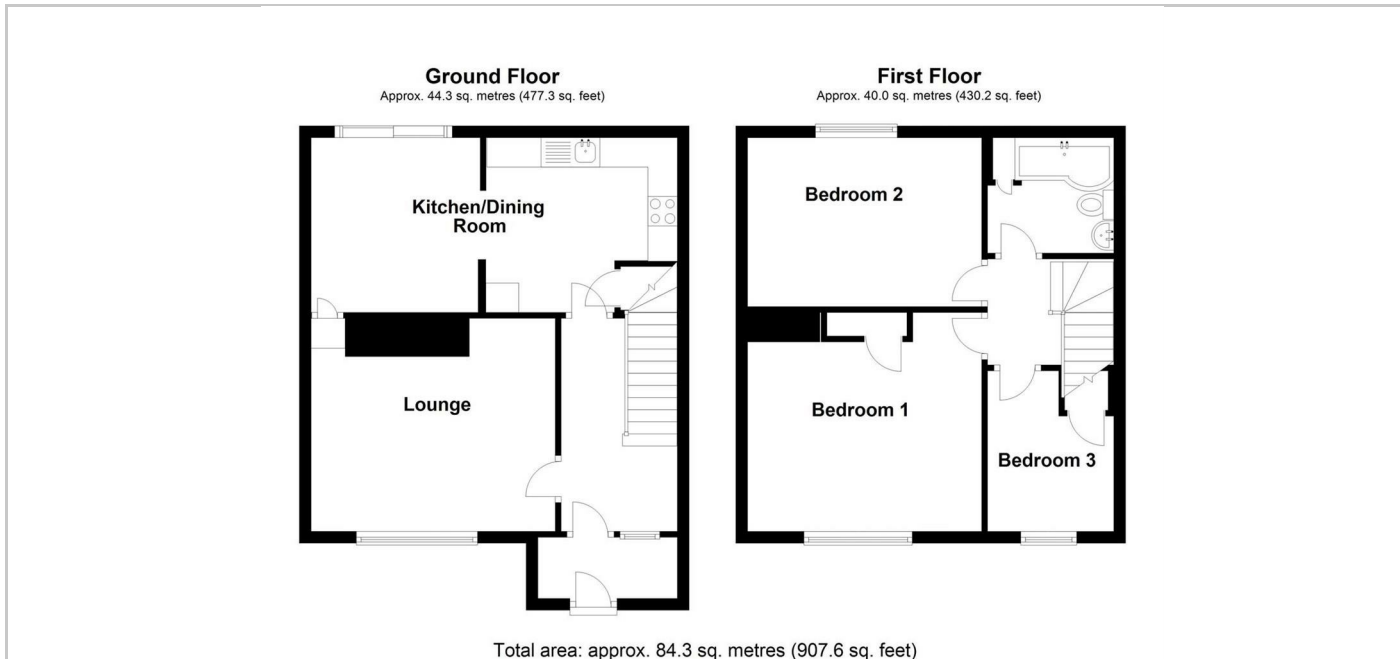
Kitchen Dining Room: 2.97m x 6.12m

Bedroom One: 3.56m x 3.22m ext 3.72m

Bedroom Two: 3.56m x 2.95m

Bedroom Three: 2.73m x 1.58m ext 2.57m

## SITUATION



## Directions

Office 4 Stockley Farm, Stockley, Wiltshire, SN11 0NT

Tel: 01225 839050 Email: [hello@blueleafproperty.co.uk](mailto:hello@blueleafproperty.co.uk) <https://www.blueleafproperty.co.uk>