



10-12 Andre Street

London, E8 2AA

Freehold Investment Opportunity Located in Hackney, E8

15,375.65 sq ft
(1,428.44 sq m)

- Freehold Investment
- 17 Residential Units
- 6 TENANTED Commercial Properties
- Annual Income of approx. £225,000
- Hackney E8

10-12 Andre Street, London, E8 2AA

Summary

Available Size	15,375.65 sq ft
Price	Offers in excess of £4,500,000
VAT	To be confirmed
Legal Fees	Each party to bear their own costs
EPC Rating	Upon Enquiry

Description

This modernist block, constructed approximately 5 years ago, is not only architecturally impressive but also boasts significant dimensions. The property spans a total size of 15,375.65 square feet, providing a spacious and well-designed environment for its occupants. The block is comprised of 17 residential units, each with a lease term of five years into 125 years. The residential units are thoughtfully integrated into the block, offering a variety of living spaces within the overall square footage. In addition to the residential aspect, the property includes 6 occupied commercial units. These spaces, contributing to the total size of the property, add a dynamic and versatile element to the block. The combination of residential and commercial units enhances the overall functionality and appeal of the property, catering to a diverse range of occupants and businesses.

The annual income from the freehold, approximately £225,000 per annum, provides a significant financial aspect to the property.

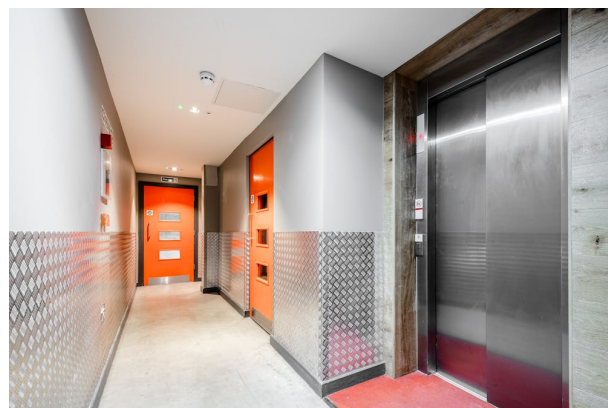
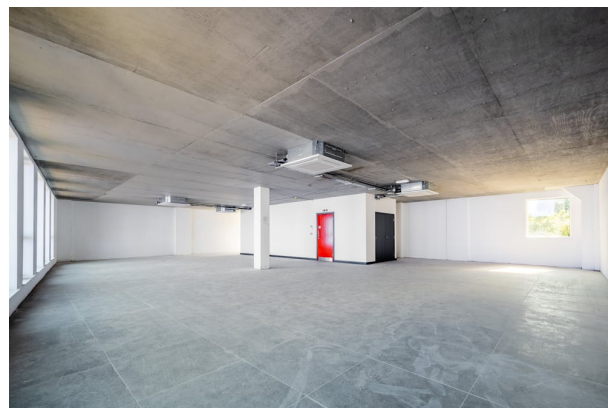
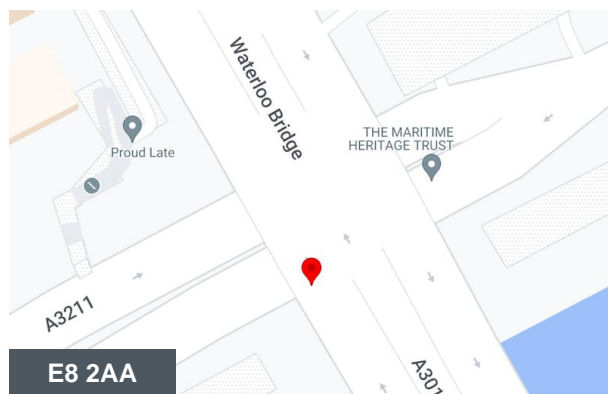
Location

Andre Street is just moments from the station and green space at Hackney Downs Station, close to all amenities and further Overground station at Hackney Central and the social hotspots of London Fields and Dalston.

Accommodation

The accommodation comprises the following areas:

Name	sq ft	sq m	Price	Availability
Building	15,375.65	1,428.44	£4,500,000	Available
Total	15,375.65	1,428.44		



Viewing & Further Information



George Sarantis

020 7613 4044 | 0731 1077 549

george@fyfemcdade.com