



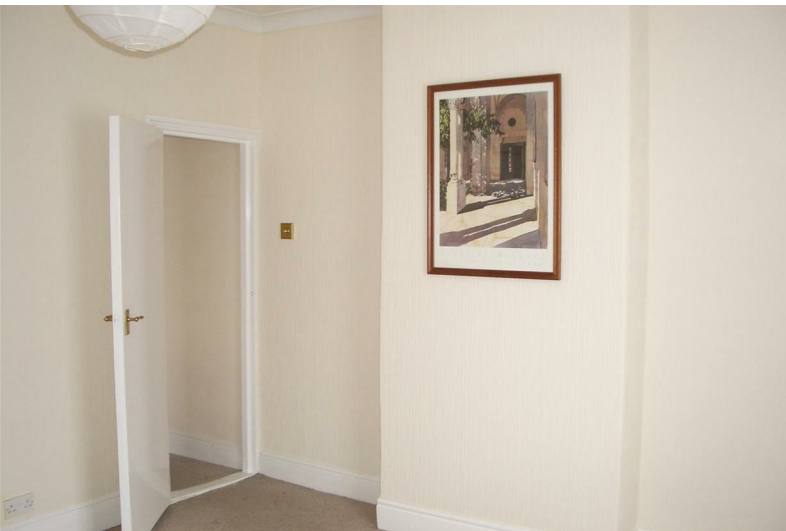
www.FlatsinSouthsea.co.uk



43b Pitcroft Road

North End, Portsmouth, PO2 8BA

£850 Per Calendar Month



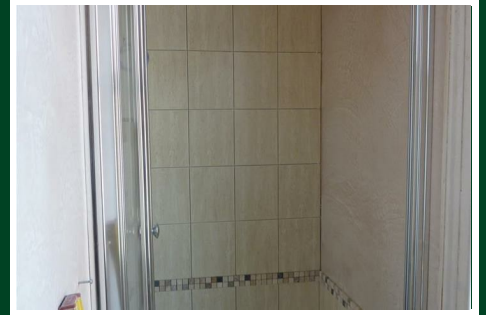
Energy Rating	
	Potential
Current	Potential
69	76
D	
E	
F	
G	
EU Directive 2002/91/EC	

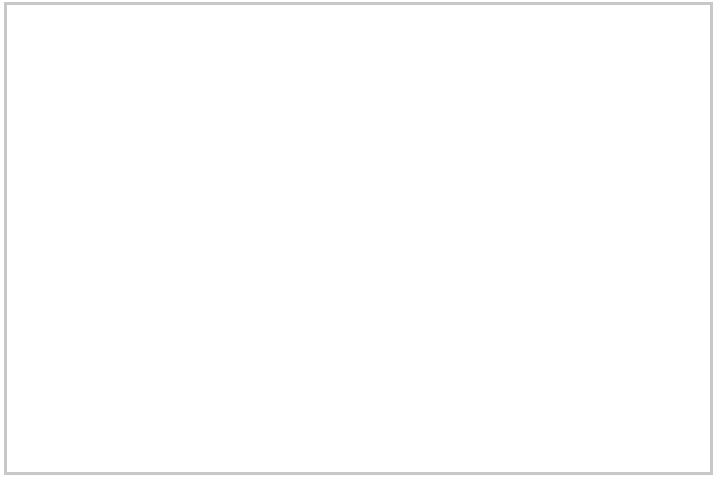
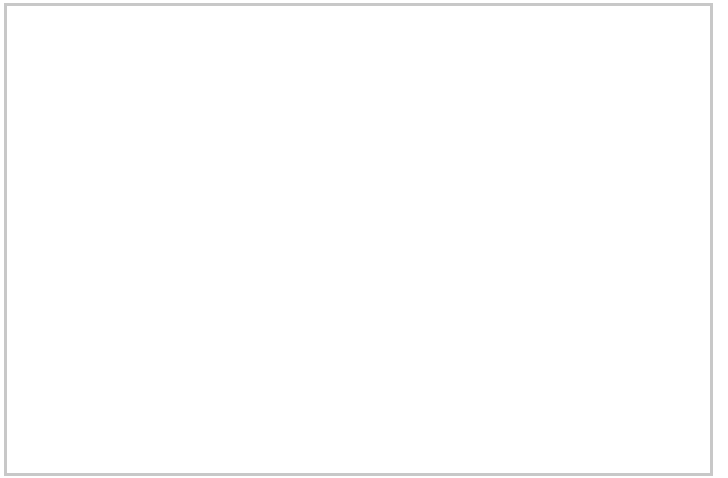
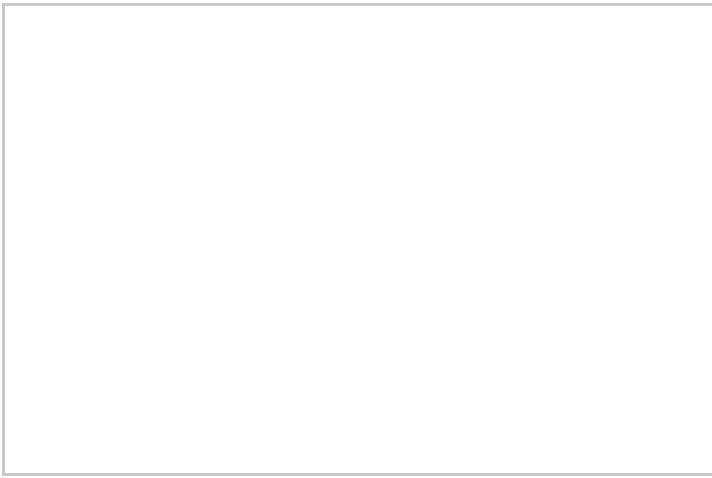
Environmental (CO ₂) Impact	
Very environmentally friendly - lower CO ₂ emissions	
(92-100) A	
(81-91) B	
(69-80) C	
(55-68) D	
(39-54) E	
(21-38) F	
(1-20) G	
Not environmentally friendly - higher CO ₂ emissions	
England & Wales	

43b Pitcroft Road

North End, Portsmouth, PO2 8BA

£850 Per Calendar Month





Road Map



Hybrid Map



Terrain Map



Floor Plan



Viewing

Please contact our Alwin Oliver Office on if you wish to arrange a viewing appointment for this property or require further information.

Energy Efficiency Graph



These particulars, whilst believed to be accurate are set out as a general outline only for guidance and do not constitute any part of an offer or contract. Intending purchasers should not rely on them as statements of representation of fact, but must satisfy themselves by inspection or otherwise as to their accuracy. No person in this firm's employment has the authority to make or give any representation or warranty in respect of the property.

The Grove Centre Albermarle House, 15 Osborne Road, PO5 3LB

Tel: Email: