



MALLINSON  
& CO

INNOVATIVE PROPERTY EXPERTS



## Castle Garden Street , Penistone, Sheffield, S36 8BD

Fixed Price £132,500

🛏 3 🚿 3 🛋 2

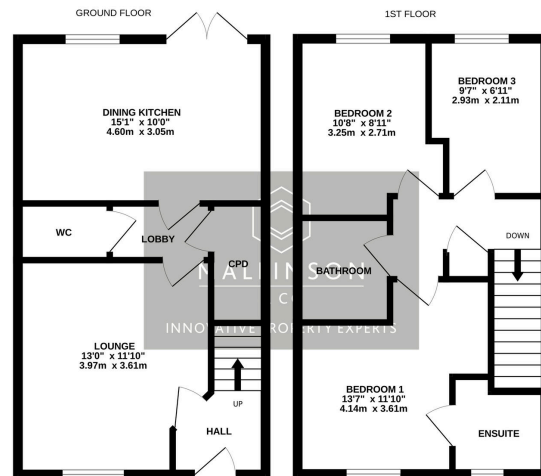


- SEMI DETACHED
- 50% SHARED OWNERSHIP
- DOWNSTAIRS W.C.
- ENCLOSED REAR GARDEN
- HIGHLY REGARDED DEVELOPMENT
- 3 BEDROOMS
- MODERN OPEN PLAN DINING KITCHEN
- EN SUITE TO BEDROOM 1
- DRIVEWAY PROVIDING OFF STREET PARKING
- CLOSE TO LOCAL AMENITIES, SCHOOLS & TRANSPORT LINKS

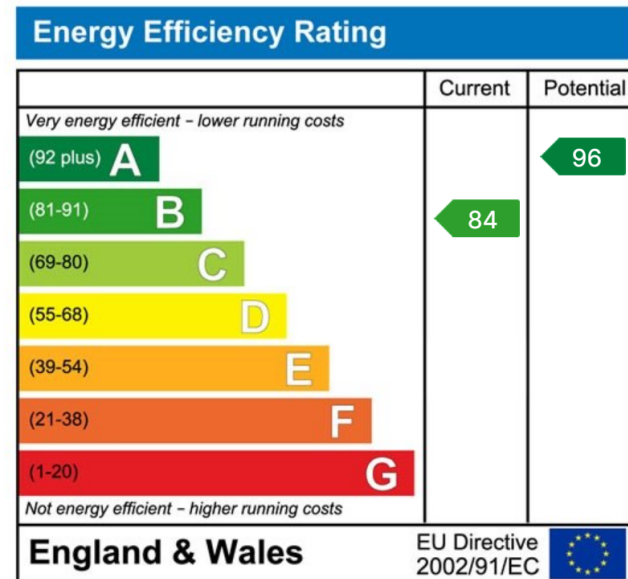




IDEALLY SUITED TO THE YOUNG COUPLE, FIRST-TIME BUYER OR GROWING FAMILY, THIS BEAUTIFULLY PRESENTED THREE-BEDROOM SEMI-DETACHED HOME OFFERS AN EXCEPTIONAL OPPORTUNITY TO TAKE YOUR FIRST STEP ONTO THE PROPERTY LADDER, BEING AVAILABLE ON A 50% SHARED OWNERSHIP BASIS. THE PROPERTY FORMS PART OF A HIGHLY REGARDED MODERN DEVELOPMENT BUILT BY BARRATT HOMES, POSITIONED WITHIN CLOSE PROXIMITY TO PENISTONE TOWN CENTRE, EXCELLENT LOCAL AMENITIES, TRANSPORT LINKS AND OPEN COUNTRYSIDE. THOUGHTFULLY DESIGNED, THE HOME FEATURES A CONTEMPORARY DINING KITCHEN, THREE GENEROUS BEDROOMS, OFF-STREET PARKING FOR TWO VEHICLES AND A DELIGHTFUL REAR GARDEN ENJOYING A FAR-REACHING RURAL VIEW. THIS IS A WONDERFUL CHANCE TO SECURE A MODERN, TURN-KEY HOME IN A SOUGHT-AFTER LOCATION.



TOTAL FLOOR AREA: 861 sq ft (79.4 sq m) approx.  
While every attempt has been made to ensure the accuracy of the floorplan contained here, measurements of actual rooms, walls and any other areas are approximate and responsibility is taken for any error, omission or misstatement. This plan is for illustrative purposes only and should be used as such by any prospective purchaser. The various options and appliances shown have not been tested and no guarantee as to their operability or efficiency can be given.  
Made with Housify ©2020



INNOVATIVE  
PROPERTY  
EXPERTS

**Mallinson & Co**

Office: 01226 414 150

Email: [ben@mallinsonandco.co.uk](mailto:ben@mallinsonandco.co.uk)

Web: [www.mallinsonandco.co.uk](http://www.mallinsonandco.co.uk)

Suite 6, Penistone 1, St. Mary's Street, Penistone, S36 6DT