



MALLINSON
& CO

INNOVATIVE PROPERTY EXPERTS

Sledbrook Crescent, Crow Edge, Sheffield, S36 4HD

Offers Over £145,000

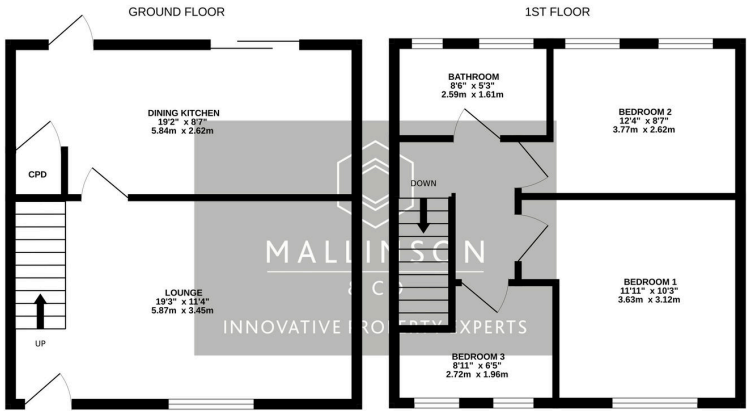
3 1 1



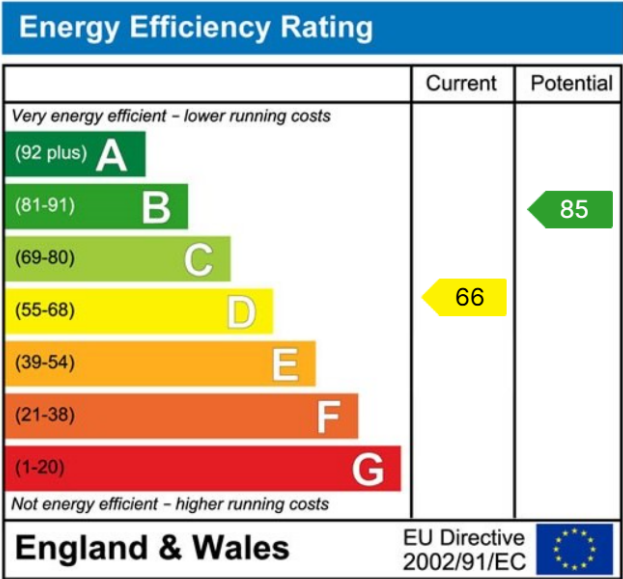
- MID TERRACE
- 3 BEDROOMS
- DECEPTIVELY SPACIOUS
- DINING KITCHEN
- MODERN BATHROOM
- OFF STREET PARKING
- LOW MAINTENANCE SOUTH FACING GARDEN
- NO UPPER VENDOR CHAIN
- CLOSE TO LOCAL AMENITIES & TRANSPORT LINKS
- IDEAL FOR FIRST TIME BUYER, COUPLE OR FAMILY



TAKE A LOOK AT THIS... SET IN THE TRANQUIL VILLAGE OF CROW EDGE IS THIS BEAUTIFULLY APPPOINTED, THREE BEDROOM MID TERRACE HOUSE, BENEFITTING FROM DECEPTIVELY SPACIOUS ACCOMODATION ACROSS TWO FLOORS. FEATURING A DINING KITCHEN, THREE GENEROUS BEDROOMS, STUNNING COUNTRYSIDE VIEWS, OFF STREET PARKING FOR TWO-THREE VEHICLES AND A LOW MAINTENANCE SOUTH FACING GARDEN, THE PROPERTY IS IDEALLY SUITED TO FIRST TIME BUYERS, COUPLES OR FAMILIES.



TOTAL FLOOR AREA: 770 sq.ft. (71.5 sq.m.) approx.
Whilst every attempt has been made to ensure the accuracy of the floorplan contained here, measurements of doors, windows, rooms and any other items are approximate and no responsibility is taken for any error, omission or mis-statement. This plan is for illustrative purposes only and should be used as such by any prospective purchaser. The services, systems and appliances shown have not been tested and no guarantee as to their operability or efficiency can be given.
 Made with Metropix ©2025



INNOVATIVE
PROPERTY
EXPERTS

Mallinson & Co

Office: 01226 414 150

Email: ben@mallinsonandco.co.uk

Web: www.mallinsonandco.co.uk

Suite 2, Penistone 1, St. Mary's Street, Penistone, Sheffield S36 6DT