



MALLINSON
& CO

INNOVATIVE PROPERTY EXPERTS

High Street, Penistone, Sheffield, S36 6BS

Offers Over £285,000

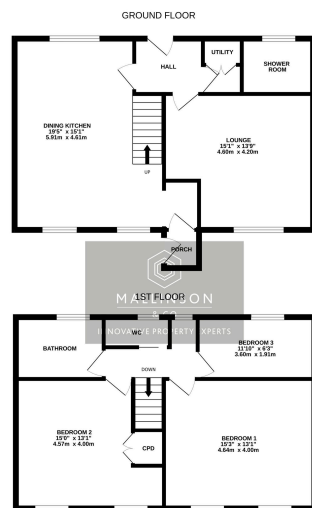
🛏 3 🚿 2 🚻 1



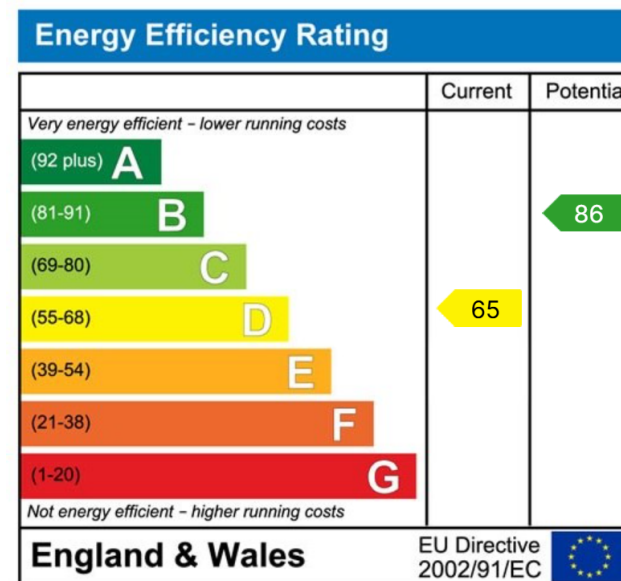
- PERIOD COTTAGE
- 3 BEDROOMS
- MANY ORIGINAL FEATURES
- IMPRESSIVE OPEN PLAN KITCHEN
- UTILITY
- BATHROOM & SHOWER ROOM
- PRIVATELY ENCLOSED FRONT GARDEN
- OFF STREET PARKING FOR 2 VEHICLES TO REAR
- CLOSE TO PENISTONE AMENITIES, SCHOOLS & TRANSPORT LINKS
- IDEAL FOR FIRST TIME BUYERS, FAMILY OR DOWNSIZER



SIMPLY OUTSTANDING! ... OCCUPYING A PRIME POSITION IN THE HEART OF PENISTONE, THIS BEAUTIFULLY RESTORED PERIOD COTTAGE EXUDES CHARM AND CHARACTER, BLENDING HISTORICAL FEATURES WITH MODERN CONVENIENCE. FROM THE STUNNING OPEN-PLAN KITCHEN WITH INGLENOOK FIREPLACE TO THE EXPOSED BEAMS, STONEMWORK, AND ELEGANT BATHROOMS, THIS IS A TRULY UNIQUE HOME. OFFERING GENEROUS LIVING SPACE ACROSS TWO FLOORS, WITH THREE BEDROOMS, TWO BATHROOMS, THE HOME ALSO BOASTS A PICTURESQUE COTTAGE-STYLE FRONT GARDEN AND OFF-STREET PARKING FOR 2-3 VEHICLES TO THE REAR. PERFECT FOR FIRST-TIME BUYERS, COUPLES, DOWNSIZERS, OR FAMILIES ALIKE, THIS MUST-SEE HOME IS BURSTING WITH WARMTH AND PERSONALITY.



TOTAL FLOOR AREA: 118sqm (1260 sq.m.) approx.
While every attempt has been made to ensure the accuracy of the floorplan, the floorplan is not a guarantee of dimensions, measurements, areas and any other details are approximate and no responsibility is taken for any error, omission or misstatement. This plan is for illustrative purposes only and should be used as such by any prospective purchaser. The intended use of the floorplan is for information only and no guarantee is given as to their quantity or efficiency can be given.
Made with Floorplan 2020



INNOVATIVE
PROPERTY
EXPERTS

Mallinson & Co

Office: 01226 414 150

Email: ben@mallinsonandco.co.uk

Web: www.mallinsonandco.co.uk

Suite 2, Penistone 1, St. Mary's Street, Penistone, Sheffield S36 6DT