



MALLINSON  
& CO

INNOVATIVE PROPERTY EXPERTS



**Mortimer Road, Penistone, Sheffield, S36 9FR**

**Offers Over £495,000**

 4  1  3



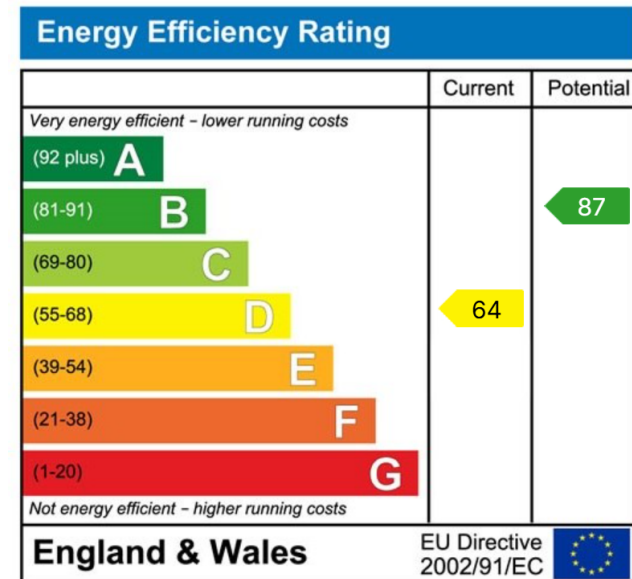
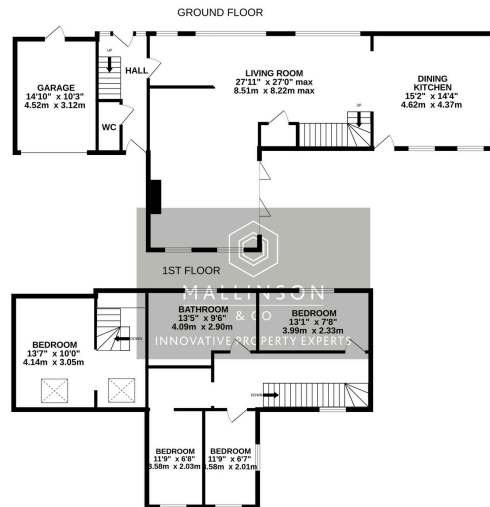
- BARN CONVERSION
- WEALTH OF CHARM & CHARACTER
- 4 BEDROOMS
- STUNNING ORIGINAL FEATURES
- OPEN PLAN LIVING ACCOMMODATION
- ENCLOSED GARDEN
- INTEGRAL GARAGE & OFF STREET PARKING
- SEMI RURAL SETTING
- EASY ACCESS TO LOCAL AMENITIES, SCHOOLS & TRANSPORT LINKS
- IDEAL FAMILY HOME







SIMPLY OUTSTANDING! ... OCCUPYING A SEMI-RURAL POSITION IS THIS TRULY STUNNING FOUR BEDROOM CHARACTER HOME, FEATURING LARGE OPEN PLAN LIVING ACCOMMODATION AND A FANTASTIC MEZZANINE BEDROOM FOUR. THERE IS A MAGNIFICENT FIVE PIECE BESPOKE HOUSE BATHROOM, PRIVATELY ENCLOSED COTTAGE STYLE GARDEN WITH A FAR REACHING COUNTRYSIDE BACKDROP AND OFF STREET PARKING. SET WITHIN CLOSE PROXIMITY TO LOCAL AMENITIES, SCHOOLS AND TRANSPORT LINKS. AN INTERNAL INSPECTION IS HIGHLY RECOMMENDED.



INNOVATIVE  
PROPERTY  
EXPERTS

**Mallinson & Co**

Office: 01226 414 150

Email: [ben@mallinsonandco.co.uk](mailto:ben@mallinsonandco.co.uk)

Web: [www.mallinsonandco.co.uk](http://www.mallinsonandco.co.uk)

Suite 2, Penistone 1, St. Mary's Street, Penistone, Sheffield S36 6DT