



MALLINSON
& CO

INNOVATIVE PROPERTY EXPERTS

Vale View, Oxspring, Sheffield, S36 8YT

Offers Over £299,950

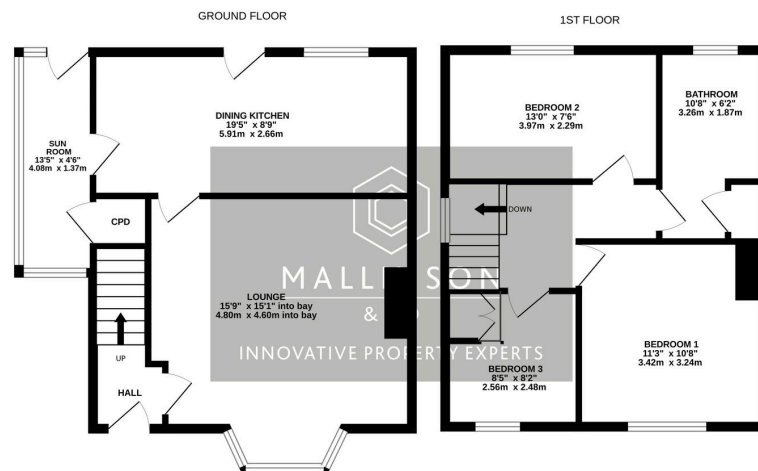
 3  1  1



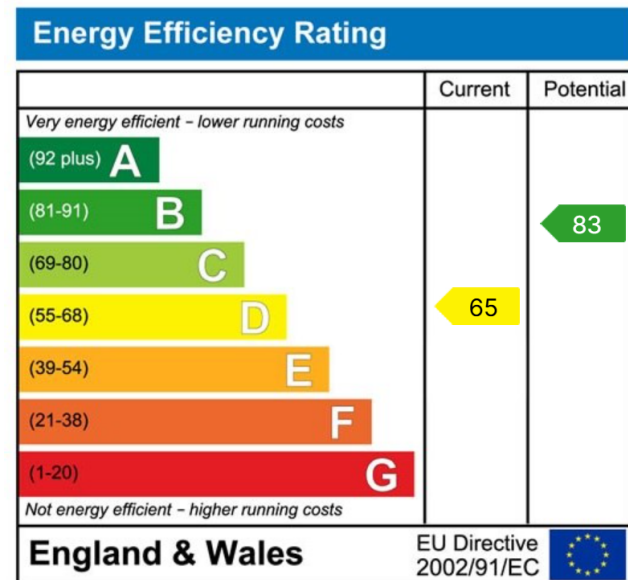
- COTTAGE STYLE END TERRACE
- WEALTH OF CHARM & CHARACTER
- DINING KITCHEN & SIDE CONSERVATORY
- GARDENS TO FRONT & REAR
- STUNNING VIEWS OVER OPEN COUNTRYSIDE
- 3 BEDROOMS
- BEAUTIFULLY PRESENTED THROUGHOUT
- 4 PIECE BATHROOM SUITE
- OFF STREET PARKING
- SOUGHT AFTER VILLAGE LOCATION



SIMPLY OUTSTANDING ... LOCATED IN THE BEAUTIFUL VILLAGE OF OXSPRING IS THIS TRULY REMARKABLE, BEAUTIFULLY PRESENTED AND DECORATED, THREE BEDROOM COTTAGE STYLE END TERRACE PROPERTY OFFERING SPACIOUS ACCOMMODATION WITH A WEALTH OF CHARM AND CHARACTER. THE PROPERTY FEATURES AN INGLENOOK FIREPLACE WITH MULTI FUEL BURNING STOVE AND A DINING KITCHEN WITH A STUNNING COUNTRYSIDE BACKDROP TO THE REAR. THE PROPERTY IS IDEALLY SUITED TO A COUPLE, FAMILY OR POTENTIAL DOWNSIZER AND AN EARLY INSPECTION IS HIGHLY RECOMMENDED.



Whilst every attempt has been made to ensure the accuracy of the floorplan contained here, measurements of doors, windows, rooms and any other items are approximate and no responsibility is taken for any error, omission or mis-statement. This plan is for illustrative purposes only and should be used as such for any prospective purchase. The services, systems and appliances shown have not been tested and no guarantee as to their operability or efficiency can be given.
Made with Metropix ©2025



INNOVATIVE
PROPERTY
EXPERTS

Mallinson & Co

Office: 01226 414 150

Email: ben@mallinsonandco.co.uk

Web: www.mallinsonandco.co.uk

Suite 2, Penistone 1, St. Mary's Street, Penistone, Sheffield S36 6DT