



MALLINSON
& CO

INNOVATIVE PROPERTY EXPERTS

Upper Midhope, Sheffield, S36 4GX

Offers Over £995,000

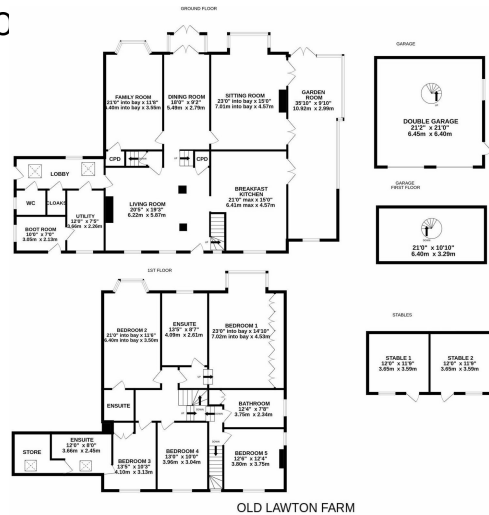
🛏 5 🚿 4 🚗 5



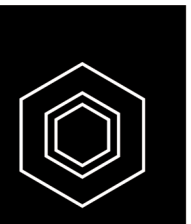
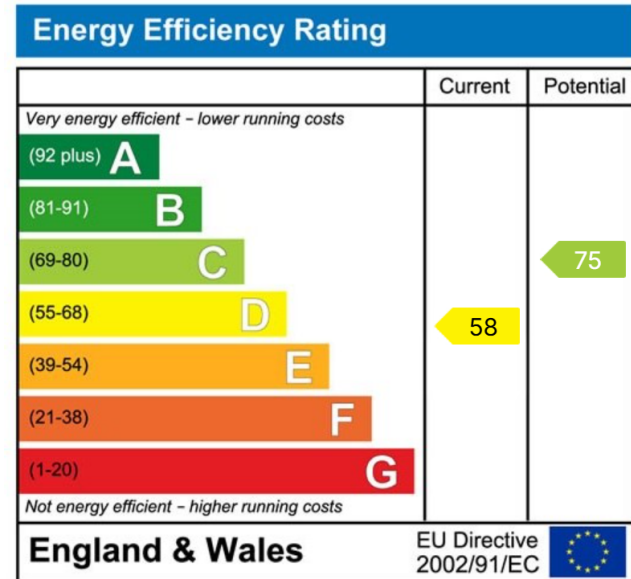
- DETACHED PERIOD FARMHOUSE
- 5 RECEPTION ROOMS
- HIGH QUALITY FIXTURE & FINISH THROUGHOUT
- DETACHED DOUBLE GARAGE & OFF STREET PARKING
- IDYLIC RURAL VILLAGE LOCATION
- 5 DOUBLE BEDROOMS
- 4 BATHROOMS
- GARDENS TO 3 SIDES WITH STUNNING VIEWS
- TWIN STABLE BLOCK
- EASY COMMUTER ACCESS TO BARNSELY, SHEFFIELD & MANCHESTER



SIMPLY STUNNING THIS OUTSTANDING PERIOD DETACHED FAMILY HOME IS SET IN UPPER MIDHOPE, ONE OF SOUTH YORKSHIRES MOST DESIRABLE VILLAGES ON THE EDGE OF THE PEAK DISTRICT NATIONAL PARK. THE PROPERTY RETAINS A WEALTH OF ORIGINAL CHARM AND CHARACTER WITH PARTS DATING BACK TO THE 16TH CENTURY, WHILST HAVING BEEN SUBSTANTIALLY UPGRADED AND EXTENDED BY THE CURRENT VENDOR ALSO OFFERS A MODERN HIGH QUALITY FIXTURE AND FINISH THROUGHOUT. THE HOME FEATURES FIVE DOUBLE BEDROOMS, FOUR BATHROOMS, AN ABUNDANCE OF VERSATILE LIVING ACCOMMODATION, GARDENS TO THREE SIDES WITH SPLENDID RURAL VIEWS, A DETACHED DOUBLE GARAGE AND A TWIN STABLE BLOCK OFFERING FURTHER DEVELOPMENT POTENTIAL. LOCATED WITHIN EASY COMMUTER ACCESS TO BARNSLEY, SHEFFIELD, MANCHESTER AND LEEDS THIS FANTASTIC PROPERTY IS NOT ONE TC



Whilst every attempt has been made to ensure the accuracy of the floorplan contained here, measurements of doors, windows, rooms and any other items are approximate and no responsibility is taken for any error, omission or mis-statement. This plan is for illustrative purposes only and should be used as such by any prospective purchaser. The services, systems and appliances shown have not been tested and no guarantee as to their operability or efficiency can be given.
Made with Metropix ©2024



INNOVATIVE
PROPERTY
EXPERTS

Mallinson & Co

Office: 01226 414 150

Email: ben@mallinsonandco.co.uk

Web: www.mallinsonandco.co.uk

Suite 2, Penistone 1, St. Mary's Street, Penistone, Sheffield S36 6DT