






MALLINSON
& CO

INNOVATIVE PROPERTY EXPERTS

Inchburn Crescent, Penistone, Sheffield, S36 6FE

Offers Over £359,995

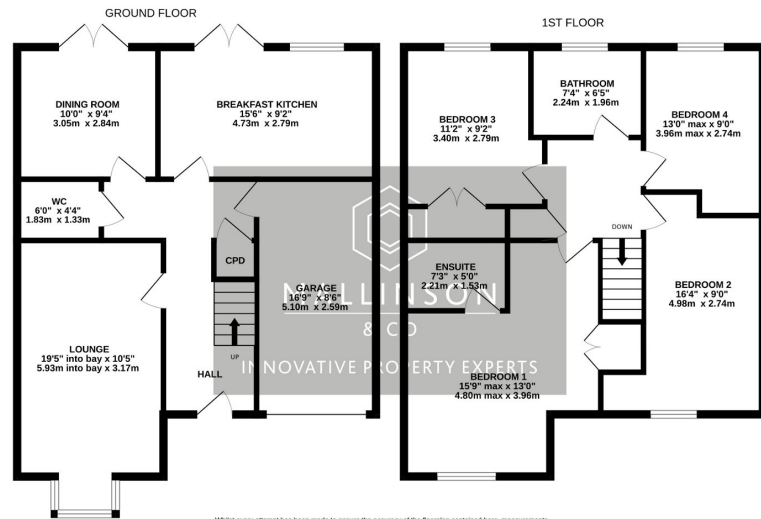
 4  3  2



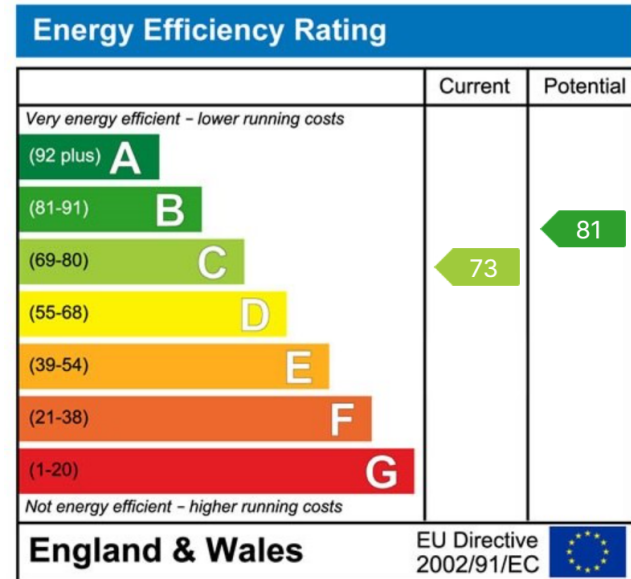
- DETACHED
- 4 DOUBLE BEDROOMS
- OPEN PLAN BREAKFAST KITCHEN
- 2 RECEPTION ROOMS
- EN SUITE TO BEDROOM 1
- POTENTIAL TO EXTEND
- REAR GARDEN
- INTEGRAL GARAGE & DRIVE
- CLOSE TO LOCAL AMENITIES, SCHOOLS & TRANSPORT LINKS
- AN IDEAL FAMILY HOME



TAKE A LOOK AT THIS ... SET ON THE HIGHLY REGARDED CALA HOMES DEVELOPMENT OFF GREEN ROAD IN PENISTONE IS THIS BEAUTIFULLY APPOINTED, FOUR DOUBLE BEDROOM DETACHED FAMILY HOME, FEATURING TWO RECEPTION ROOMS, BREAKFAST KITCHEN, EN SUITE TO BEDROOM ONE, INTEGRAL GARAGE, DRIVEWAY AND A GOOD SIZED REAR GARDEN. LOCATED WITHIN CLOSE PROXIMITY TO PENISTONE CENTRE AMENITIES, SCHOOLING AND THE TRANS PENNINE TRAIL.



Whilst every attempt has been made to ensure the accuracy of the floorplan contained here, measurements of doors, windows, rooms and any other items are approximate and no responsibility is taken for any error, omission or mis-statement. This plan is for illustrative purposes only and should be used as such by any prospective purchaser. The services, systems and appliances shown have not been tested and no guarantee is given as to their operability or efficiency can be given.
Made with Metropix CS2024



**INNOVATIVE
PROPERTY
EXPERTS**

Mallinson & Co

Office: 01226 414 150

Email: ben@mallinsonandco.co.uk

Web: www.mallinsonandco.co.uk

Suite 2, Penistone 1, St. Mary's Street, Penistone, Sheffield S36 6DT