



Twigworth Green Twigworth

lindenhomes.co.uk

CONSUMER
CODE FOR
HOME BUILDERS

www.consumercode.co.uk

Linden
HOMES



Twigworth Green Twigworth

A collection of 3 and 4 bedroom homes in a beautiful village

This exciting new development is in the Gloucestershire village of Twigworth, within easy reach of the historic cathedral city of Gloucester.

The development will include convenience store, bakery and cafe. Gloucester also offers an array of independent and high street retailers and a farmers' market.

Historic Gloucester, the pretty riverside town of Tewkesbury and Regency Cheltenham are all close by. There are also countryside

walks in the area, including the Gloucestershire Way and Cotswolds Area of Outstanding Natural Beauty.

Parents will be pleased to find a good selection of schools for all ages nearby.

Twigworth Green is just off the A38 giving access to Gloucester, Tewkesbury, Cheltenham and the M5. Gloucester train station offers connections to London Paddington, Bristol, Worcester, Swindon and Cardiff.

Twigworth Green

Tewkesbury Road, Twigworth GL2 9PQ | **01452 402 751**

lindenhomes.co.uk

Linden
HOMES

Scan me
for directions



Twigworth Green

Tewkesbury Road, Twigworth,
Gloucestershire GL2 9PQ

From Tewkesbury

- Head south on the A38 Gloucester Road
- At the roundabout take the second exit
- Continue on the A38 for approximately 6 miles
- On entering Twigworth continue for another mile
- Twigworth Green will be found at the roundabout on your left

From Gloucester

- Leave Gloucester on Black Dog Way
- At the roundabout continue onto the A38 Tewkesbury Road
- At the next roundabout take the second exit
- Continue on the A38 Tewkesbury Road for approximately one mile
- On entering Twigworth pass St Matthew's Church
- Twigworth Green will be found at the roundabout on your right

Cover photograph of local countryside. Not view from the development. The streetscene has been produced for illustrative purposes only, please check the details of the homes you are interested in with the sales consultant.

Linden homes Limited, Countryside Partnerships South West region
Camberwell House, Grenaider Road, Exeter Business Park, Exeter, Devon EX1 3QF. Telephone: 0800 9755 946.

Produced by the Vistry Group Design Studio.

When you have finished with this leaflet please recycle it.

WTWIG DS06179 / 06.23

Linden
HOMES

Development layout



- 4 bedroom home**
- The Cottingham
 - The Knightley
 - The Leverton
 - The Mylne
 - The Papworth
 - The Pembroke
 - The Aslin

- 3 bedroom home**
- The Becket
 - The Elmslie
- Affordable housing
- v visitor space
- bollards

Hedgehog highways to fences.
Please see sales consultant for further details.

Not to scale. Trees and landscaping are indicative only and may alter during construction. The trees, shrubs and gardens shown are illustrative only. Finishes and materials may vary from those shown here. Please see our sales consultant for further details.

Produced by the Vistry Group Design Studio.

When you have finished with this leaflet please recycle it.

WTWIG DS06519 / 08.23

Twigworth Green

Twigworth, Gloucestershire GL2 9PQ | 01452 402751

lindenhomes.co.uk

Linden
HOMES



The Becket

3 bedroom home

Twigworth Green

Twigworth, Gloucestershire GL2 9PQ | 01452 402751

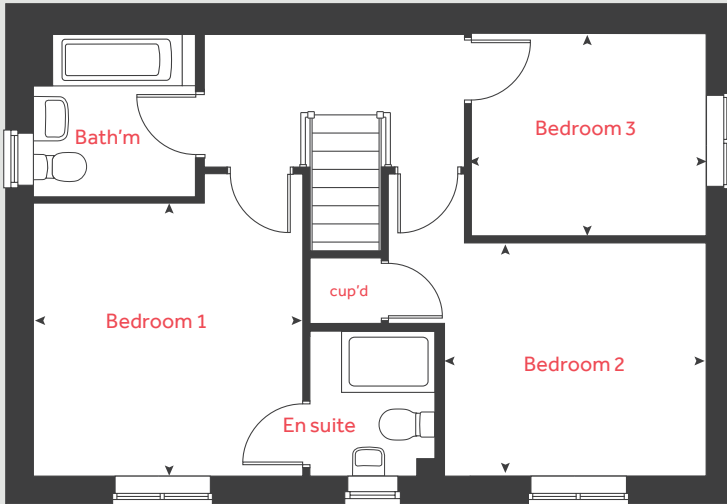
lindenhomes.co.uk

Linden
HOMES

The Becket

3 bedroom home

First floor



| Ground floor | metres | feet / inches |
|-----------------------|-------------|------------------|
| Kitchen / dining area | 5.59 x 2.90 | 18' 4" x 9' 6" |
| Living room | 5.59 x 3.33 | 18' 4" x 10' 11" |

| First floor | metres | feet / inches |
|-------------|-------------|-----------------|
| Bedroom 1 | 3.43 x 3.39 | 11' 3" x 11' 2" |
| Bedroom 2 | 3.34 x 2.94 | 10' 11" x 9' 8" |
| Bedroom 3 | 2.99 x 2.56 | 9' 10" x 8' 5" |

| | | | |
|------|----------------------|-------|-----------------------|
| h | hob | ws | washing machine space |
| ovn | oven | cup'd | cupboard |
| ffzs | fridge freezer space | ◀ ▶ | measuring points |
| ds | dishwasher space | | |

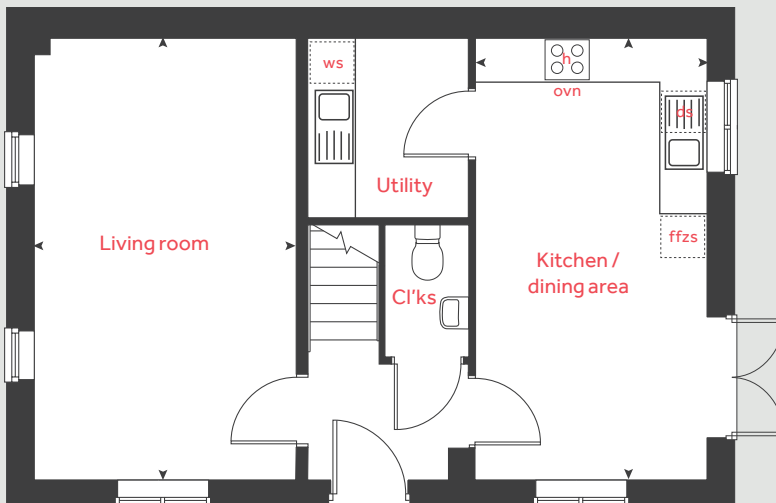
The Becket | WTWIG |

The floorplan has been produced for illustrative purposes only. Room sizes shown are between arrow points as indicated on plan. The dimensions have tolerances of + or -50mm and should not be used other than for general guidance. If specific dimensions are required, enquiries should be made to the sales consultant. The floor plans shown are not to scale. Measurements are based on the original drawings. Slight variations may occur during construction.

The illustrations shown are computer generated impressions of how the property may look and are indicative only. External details or finishes may vary on individual plots and homes may be built in either detached or attached styles depending on the development layout. Exact specifications, window styles and whether a property is left or right-handed may differ from plot to plot. Please speak to our sales consultant for specific plot details.

Produced by Vistry Group Design Studio.
When you have finished with this leaflet please recycle it.
130-TWIG DS06519 / 11.23

Ground floor



Linden

HOMES



The Elmslie

3 bedroom home

Twigworth Green

Twigworth, Gloucestershire GL2 9PQ | 01452 402751

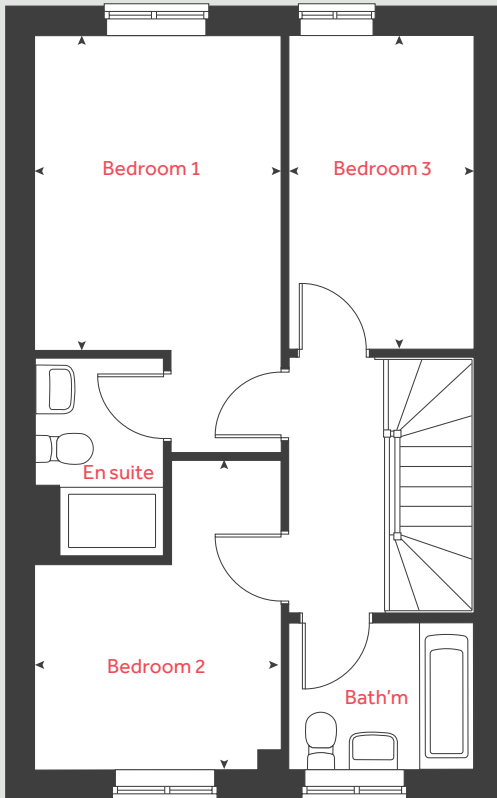
lindenhomes.co.uk

Linden
HOMES

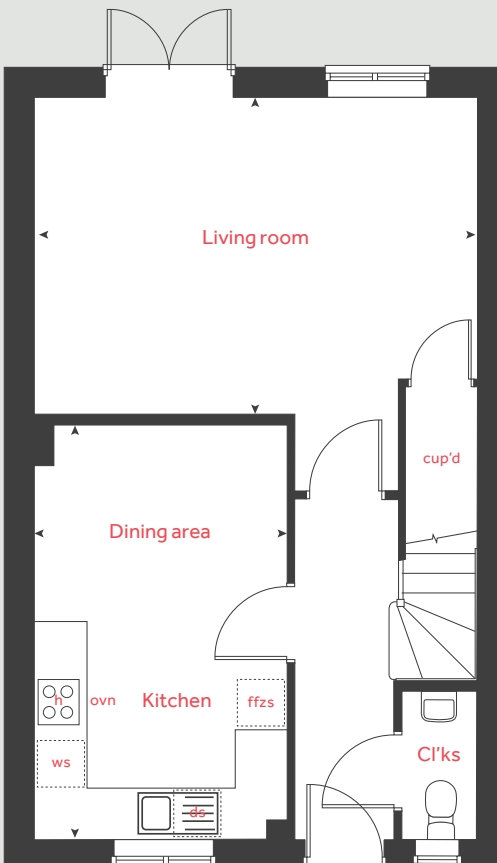
The Elmslie

3 bedroom home

First floor



Ground floor



| Ground floor | metres | feet / inches |
|-----------------------|-------------|------------------|
| Kitchen / dining area | 4.78 x 2.91 | 15' 8" x 9' 6" |
| Living room | 5.09 x 3.63 | 16' 9" x 11' 11" |

| First floor | metres | feet / inches |
|-------------|-------------|----------------|
| Bedroom 1 | 3.66 x 2.86 | 12' 0" x 9' 4" |
| Bedroom 2 | 2.85 x 2.37 | 9' 4" x 7' 9" |
| Bedroom 3 | 3.65 x 2.15 | 12' 0" x 7' 1" |

| | | | |
|------|----------------------|-------|-----------------------|
| h | hob | ws | washing machine space |
| ovn | oven | cup'd | cupboard |
| ffzs | fridge freezer space | < > | measuring points |
| ds | dishwasher space | | |

The Elmslie | WTWIG

The floorplan has been produced for illustrative purposes only. Room sizes shown are between arrow points as indicated on plan. The dimensions have tolerances of + or -50mm and should not be used other than for general guidance. If specific dimensions are required, enquiries should be made to the sales consultant. The floor plans shown are not to scale. Measurements are based on the original drawings. Slight variations may occur during construction.

The illustrations shown are computer generated impressions of how the property may look and are indicative only. External details or finishes may vary on individual plots and homes may be built in either detached or attached styles depending on the development layout. Exact specifications, window styles and whether a property is left or right-handed may differ from plot to plot. Please speak to our sales consultant for specific plot details.

Produced by Vistry Group Design Studio.
When you have finished with this leaflet please recycle it.
130-TWIG DS06519 / 11.23

Linden
HOMES



The Papworth

4 bedroom home

Twigworth Green

Twigworth, Gloucestershire GL2 9PQ | 01452 402751

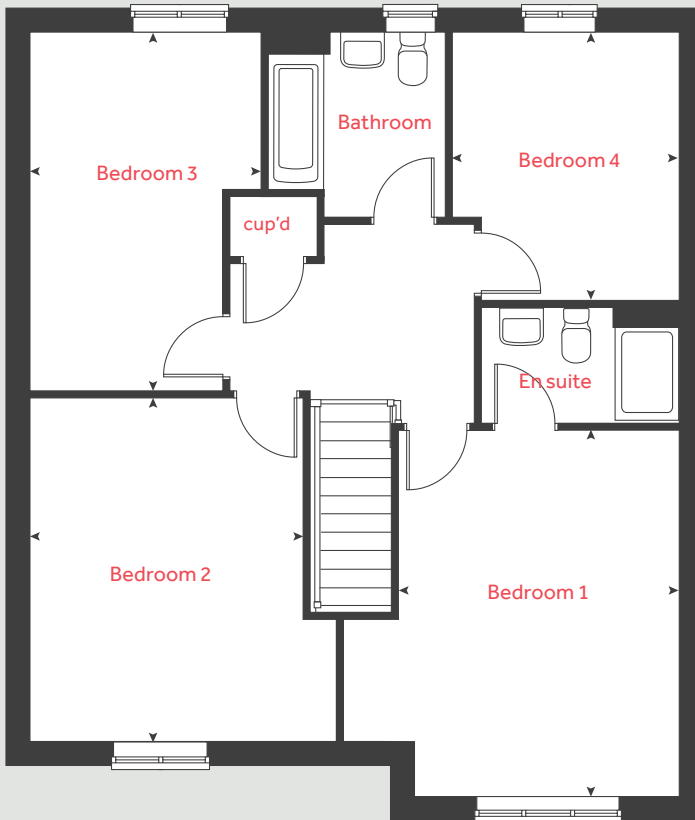
lindenhomes.co.uk

Linden
HOMES

The Papworth

4 bedroom home

First floor

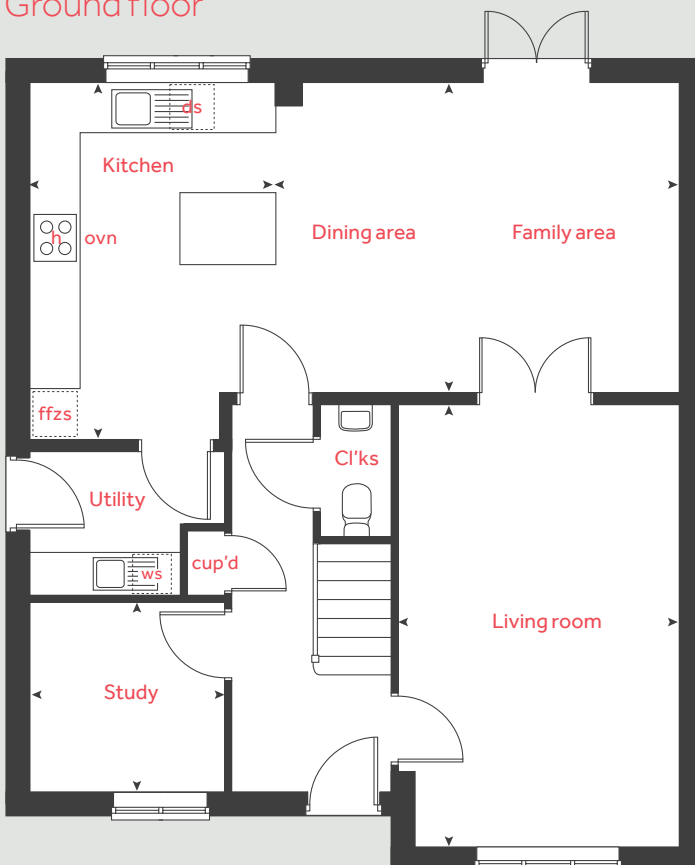


| Ground floor | metres | feet / inches |
|----------------------|-------------|-----------------|
| Kitchen | 4.45 x 3.05 | 14' 7" x 10' 0" |
| Dining / family area | 5.10 x 3.85 | 16' 6" x 12' 8" |
| Living room | 5.51 x 3.63 | 18' 1" x 11' 5" |

| First floor | metres | feet / inches |
|-------------|-------------|-----------------|
| Bedroom 1 | 6.09 x 2.74 | 12' 0" x 9' 0" |
| Bedroom 2 | 4.28 x 3.39 | 14' 1" x 11' 1" |
| Bedroom 3 | 4.46 x 2.87 | 14' 8" x 9' 5" |
| Bedroom 4 | 3.33 x 2.81 | 10' 11" x 9' 3" |

| | | | |
|------|----------------------|-------|-----------------------|
| h | hob | ws | washing machine space |
| ovn | oven | cup'd | cupboard |
| ffzs | fridge freezer space | ◀ ▶ | measuring points |
| ds | dishwasher space | | |

Ground floor



The Papworth | WTWIG

The floorplan has been produced for illustrative purposes only. Room sizes shown are between arrow points as indicated on plan. The dimensions have tolerances of + or -50mm and should not be used other than for general guidance. If specific dimensions are required, enquiries should be made to the sales consultant. The floor plans shown are not to scale. Measurements are based on the original drawings. Slight variations may occur during construction.

The illustrations shown are computer generated impressions of how the property may look and are indicative only. External details or finishes may vary on individual plots and homes may be built in either detached or attached styles depending on the development layout. Exact specifications, window styles and whether a property is left or right-handed may differ from plot to plot. Please speak to our sales consultant for specific plot details.

Produced by Vistry Group Design Studio.
When you have finished with this leaflet please recycle it.
130-TWIG DS06519 / 11.23

Linden
HOMES



The Cottingham

4 bedroom home

Twigworth Green

Twigworth, Gloucestershire GL2 9PQ | 01452 402751

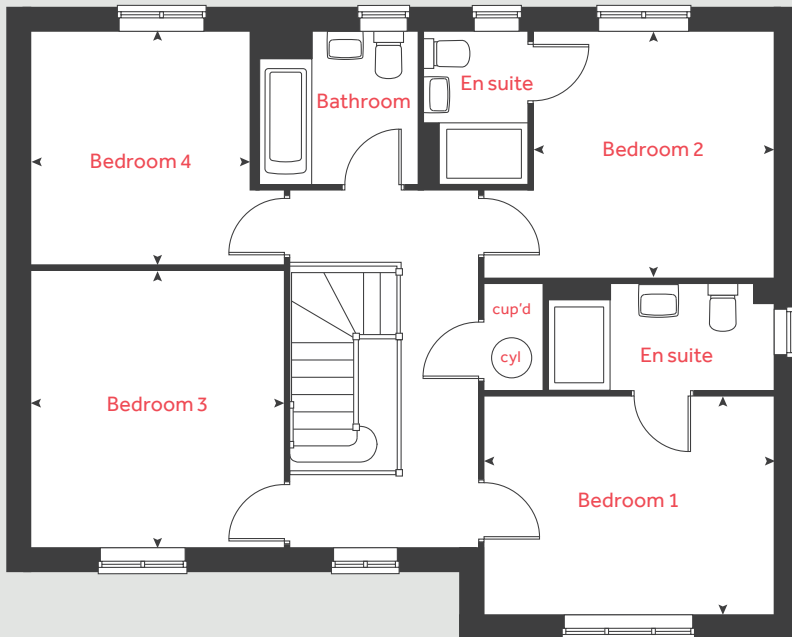
[lindenhomes.co.uk](https://www.lindenhomes.co.uk)

Linden
HOMES

The Cottingham

4 bedroom home

First floor



| Ground floor | metres | feet / inches |
|--------------------------------|-------------|-----------------|
| Kitchen / dining / family area | 9.97 x 3.09 | 32' 8" x 10' 1" |
| Living room | 4.60 x 4.20 | 15' 1" x 13' 9" |
| Study | 2.27 x 1.81 | 7' 5" x 5' 11" |

First floor

| | | |
|-----------|-------------|-----------------|
| Bedroom 1 | 3.90 x 3.15 | 12' 9" x 10' 4" |
| Bedroom 2 | 3.23 x 3.14 | 10' 7" x 10' 4" |
| Bedroom 3 | 3.73 x 3.39 | 12' 2" x 11' 1" |
| Bedroom 4 | 3.73 x 2.93 | 12' 2" x 9' 7" |

| | | | |
|------|----------------------|-------|-----------------------|
| h | hob | ws | washing machine space |
| ovn | oven | cup'd | cupboard |
| ffzs | fridge freezer space | cyl | hot water cylinder |
| ds | dishwasher space | ◀ ▶ | measuring points |

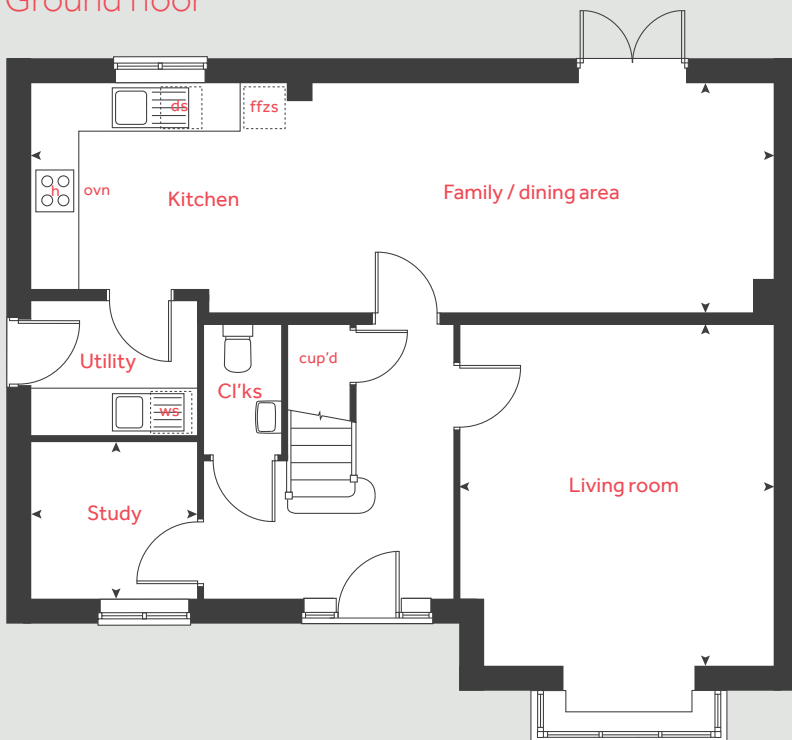
The Cottingham | WTWIG |

The floorplan has been produced for illustrative purposes only. Room sizes shown are between arrow points as indicated on plan. The dimensions have tolerances of + or -50mm and should not be used other than for general guidance. If specific dimensions are required, enquiries should be made to the sales consultant. The floor plans shown are not to scale. Measurements are based on the original drawings. Slight variations may occur during construction.

The illustrations shown are computer generated impressions of how the property may look and are indicative only. External details or finishes may vary on individual plots and homes may be built in either detached or attached styles depending on the development layout. Exact specifications, window styles and whether a property is left or right-handed may differ from plot to plot. Please speak to our sales consultant for specific plot details.

Produced by Vistry Group Design Studio.
When you have finished with this leaflet please recycle it.
130-TWIG DS06519 / 11.23

Ground floor



Linden
HOMES



The Knightley

4 bedroom home

Twigworth Green

Twigworth, Gloucestershire GL2 9PQ | 01452 402751

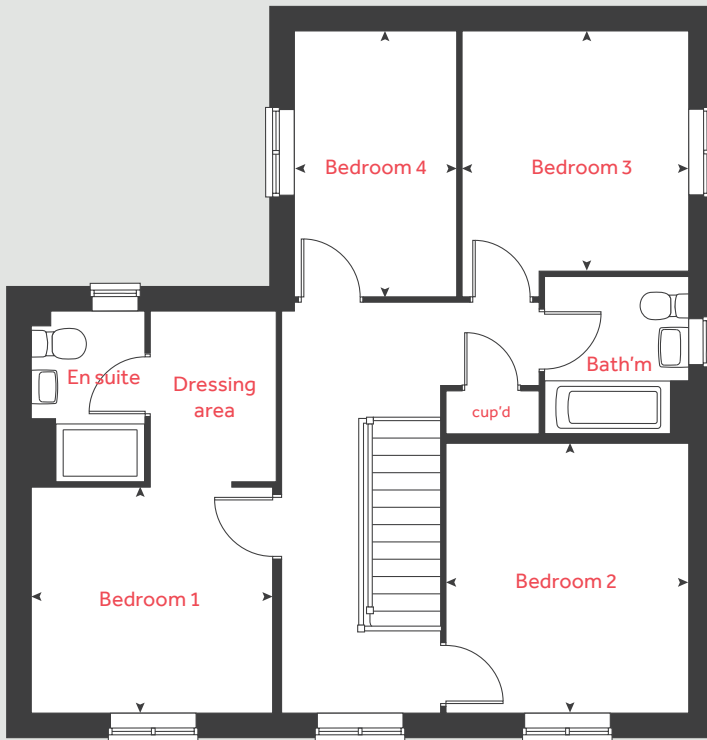
lindenhomes.co.uk

Linden
HOMES

The Knightley

4 bedroom home

First floor

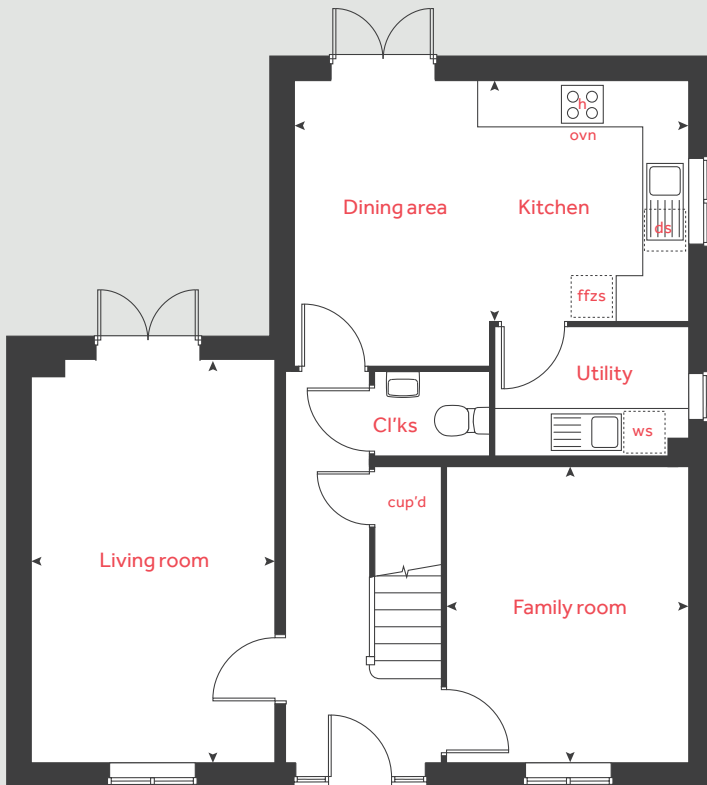


| Ground floor | metres | feet / inches |
|-----------------------|-------------|------------------|
| Kitchen / dining area | 5.25 x 3.20 | 17' 2" x 10' 5" |
| Living room | 5.36 x 3.22 | 17' 7" x 10' 7" |
| Family room | 3.93 x 3.21 | 12' 10" x 10' 5" |

| First floor | metres | feet / inches |
|-------------|-------------|-----------------|
| Bedroom 1 | 3.20 x 2.98 | 10' 6" x 9' 10" |
| Bedroom 2 | 3.58 x 3.21 | 10' 7" x 11' 9" |
| Bedroom 3 | 3.17 x 3.01 | 10' 5" x 9' 11" |
| Bedroom 4 | 3.52 x 2.15 | 11' 7" x 7' 1" |

| | | | |
|------|----------------------|-------|-----------------------|
| h | hob | ws | washing machine space |
| ovn | oven | cup'd | cupboard |
| ffzs | fridge freezer space | ◀ ▶ | measuring points |
| ds | dishwasher space | | |

Ground floor



The Knightley | vt WTWIG |

The floorplan has been produced for illustrative purposes only. Room sizes shown are between arrow points as indicated on plan. The dimensions have tolerances of + or -50mm and should not be used other than for general guidance. If specific dimensions are required, enquiries should be made to the sales consultant. The floor plans shown are not to scale. Measurements are based on the original drawings. Slight variations may occur during construction.

The illustrations shown are computer generated impressions of how the property may look and are indicative only. External details or finishes may vary on individual plots and homes may be built in either detached or attached styles depending on the development layout. Exact specifications, window styles and whether a property is left or right-handed may differ from plot to plot. Please speak to our sales consultant for specific plot details.

Produced by Vistry Group Design Studio.
When you have finished with this leaflet please recycle it.
130-TWIG DS06519 / 11.23

Linden
HOMES



The Leverton

4 bedroom home

Twigworth Green

Twigworth, Gloucestershire GL2 9PQ | 01452 402751

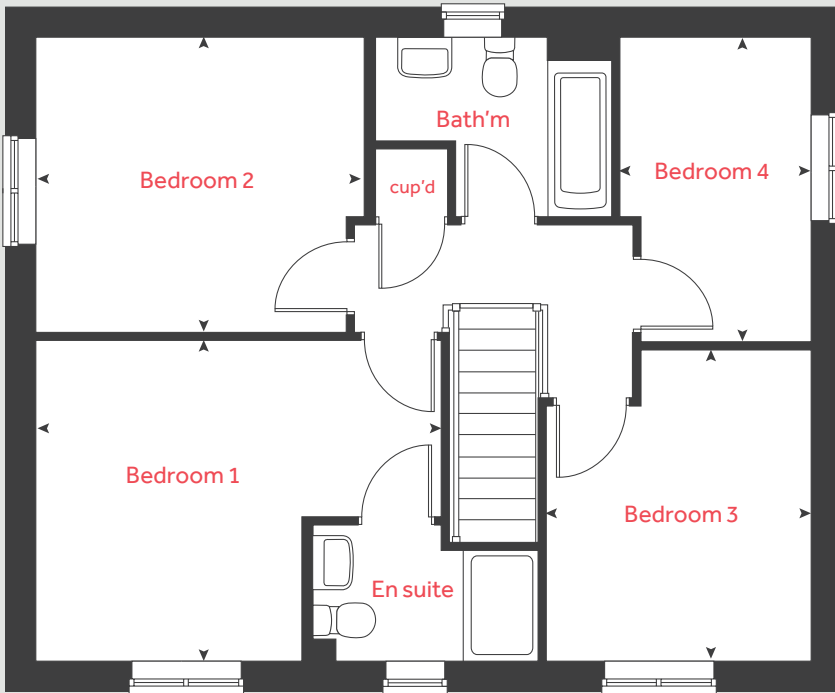
lindenhomes.co.uk

Linden
HOMES

The Leverton

4 bedroom home

First floor



| Ground floor | metres | feet / inches |
|--------------|-------------|-----------------|
| Kitchen | 3.24 x 2.80 | 10' 7" x 9' 2" |
| Living room | 4.81 x 3.39 | 15' 9" x 11' 1" |
| Dining area | 3.91 x 2.81 | 12' 10" x 9' 2" |
| Study | 3.39 x 1.82 | 11' 1" x 5' 11" |

| First floor | metres | feet / inches |
|-------------|-------------|-----------------|
| Bedroom 1 | 4.40 x 3.49 | 14' 5" x 11' 5" |
| Bedroom 2 | 3.59 x 3.15 | 11' 9" x 10' 4" |
| Bedroom 3 | 3.38 x 2.88 | 11' 1" x 9' 5" |
| Bedroom 4 | 3.26 x 2.08 | 10' 8" x 6' 10" |

| | | | |
|------|----------------------|-------|-----------------------|
| h | hob | ws | washing machine space |
| ovn | oven | cup'd | cupboard |
| ffzs | fridge freezer space | ◀ ▶ | measuring points |
| ds | dishwasher space | | |

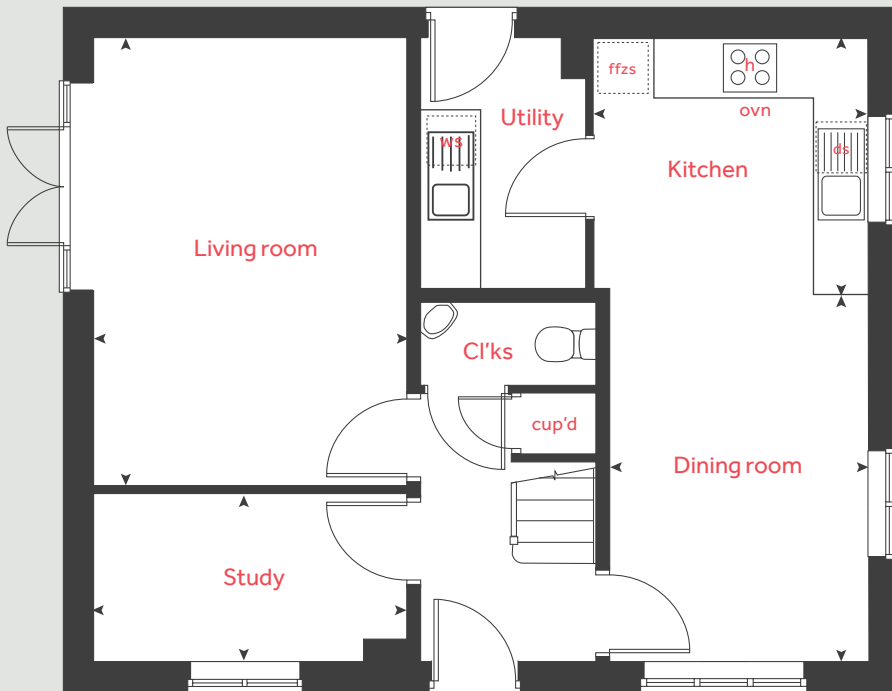
The Leverton | vt WTWIG |

The floorplan has been produced for illustrative purposes only. Room sizes shown are between arrow points as indicated on plan. The dimensions have tolerances of + or -50mm and should not be used other than for general guidance. If specific dimensions are required, enquiries should be made to the sales consultant. The floor plans shown are not to scale. Measurements are based on the original drawings. Slight variations may occur during construction.

The illustrations shown are computer generated impressions of how the property may look and are indicative only. External details or finishes may vary on individual plots and homes may be built in either detached or attached styles depending on the development layout. Exact specifications, window styles and whether a property is left or right-handed may differ from plot to plot. Please speak to our sales consultant for specific plot details.

Produced by Vistry Group Design Studio.
When you have finished with this leaflet please recycle it.
130-TWIG DS06519 / 11.23

Ground floor



Linden
HOMES



The Pembroke

4 bedroom home

Twigworth Green

Twigworth, Gloucestershire GL2 9PQ | 01452 402751

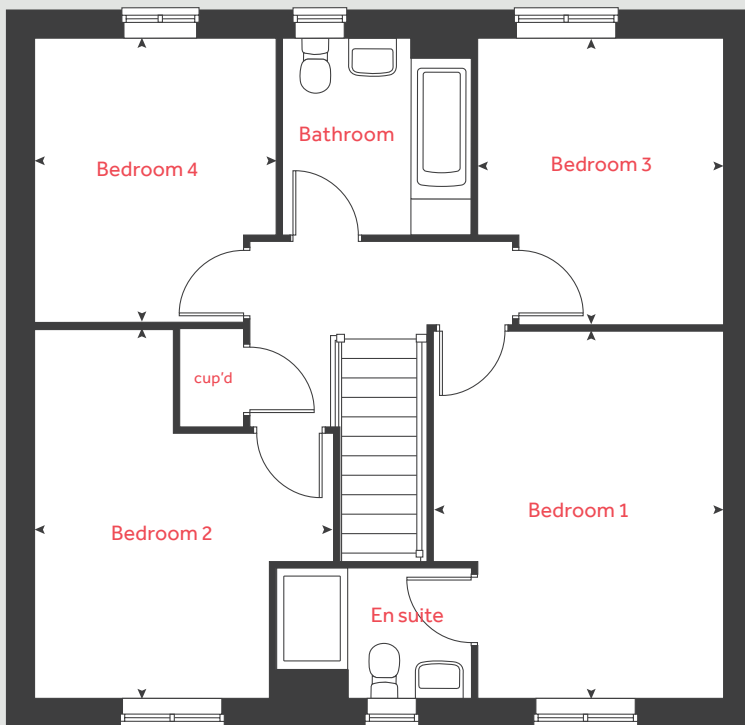
[lindenhomes.co.uk](https://www.lindenhomes.co.uk)

Linden
HOMES

The Pembroke

4 bedroom home

First floor

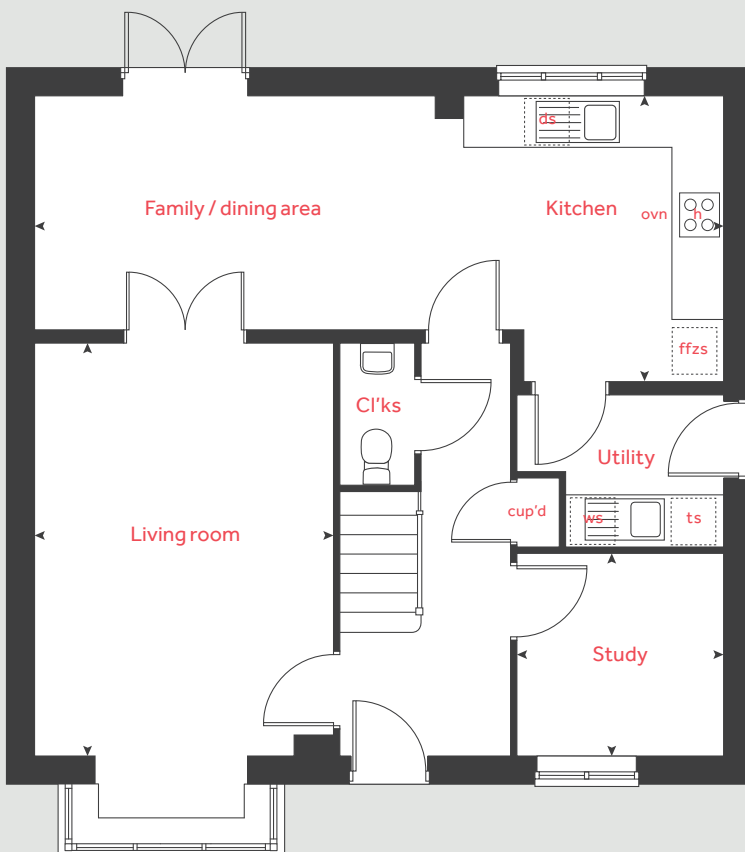


| Ground floor | metres | feet / inches |
|--------------------------------|-------------|------------------|
| Kitchen / dining / family area | 8.07 x 3.36 | 26' 6" x 11' 0" |
| Living room | 4.83 x 3.48 | 15' 10" x 11' 5" |
| Study | 2.40 x 2.35 | 7' 11" x 7' 9" |

| First floor | metres | feet / inches |
|-------------|-------------|-----------------|
| Bedroom 1 | 4.29 x 3.38 | 14' 1" x 11' 1" |
| Bedroom 2 | 4.31 x 2.73 | 14' 2" x 9' 0" |
| Bedroom 3 | 3.35 x 2.87 | 11' 0" x 9' 5" |
| Bedroom 4 | 3.32 x 2.81 | 10' 11" x 9' 3" |

| | | | |
|------|----------------------|-------|-----------------------|
| h | hob | ts | tumble dryer space |
| ovn | oven | ws | washing machine space |
| ffzs | fridge freezer space | cup'd | cupboard |
| ds | dishwasher space | ◀ ▶ | measuring points |

Ground floor



The Pembroke | WTWIG |

The floorplan has been produced for illustrative purposes only. Room sizes shown are between arrow points as indicated on plan. The dimensions have tolerances of + or -50mm and should not be used other than for general guidance. If specific dimensions are required, enquiries should be made to the sales consultant. The floor plans shown are not to scale. Measurements are based on the original drawings. Slight variations may occur during construction.

The illustrations shown are computer generated impressions of how the property may look and are indicative only. External details or finishes may vary on individual plots and homes may be built in either detached or attached styles depending on the development layout. Exact specifications, window styles and whether a property is left or right-handed may differ from plot to plot. Please speak to our sales consultant for specific plot details.

Produced by Vistry Group Design Studio.
When you have finished with this leaflet please recycle it.

130-TWIG DS06519 / 11.23

Linden
HOMES



The Aslin

4 bedroom home

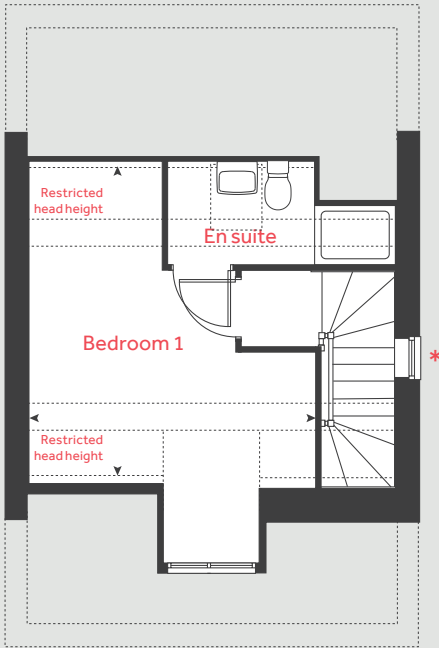
Twigworth Green

Twigworth, Gloucestershire GL2 9PQ | 01452 402751

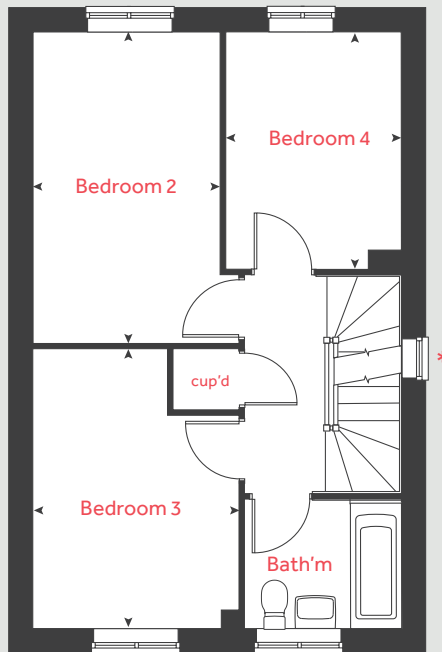
lindenhomes.co.uk

Linden
HOMES

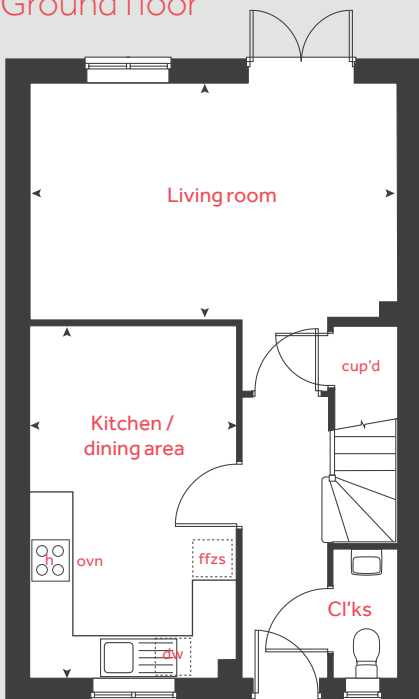
Second floor



First floor



Ground floor



The Aslin

4 bedroom home

| Ground floor | metres | feet / inches |
|-----------------------|-------------|-----------------|
| Kitchen / dining area | 4.78 x 2.80 | 15' 8" x 9' 2" |
| Living room | 4.98 x 3.16 | 16' 4" x 10' 4" |

| First floor | metres | feet / inches |
|-------------|-------------|----------------|
| Bedroom 2 | 4.19 x 2.52 | 13' 9" x 8' 3" |
| Bedroom 3 | 3.78 x 2.77 | 12' 5" x 9' 1" |
| Bedroom 4 | 3.19 x 2.37 | 10' 6" x 7' 9" |

| Second floor | metres | feet / inches |
|--------------|-------------|-----------------|
| Bedroom 1 | 4.29 x 3.88 | 14' 1" x 12' 9" |

| | | | |
|------|----------------------|-------|------------------|
| h | hob | ds | dishwasher space |
| ovn | oven | cup'd | cupboard |
| ffzs | fridge freezer space | < > | measuring points |

The Aslin | WTWIG |

The floorplan has been produced for illustrative purposes only. Room sizes shown are between arrow points as indicated on plan. The dimensions have tolerances of + or -50mm and should not be used other than for general guidance. If specific dimensions are required, enquiries should be made to the sales consultant. The floor plans shown are not to scale. Measurements are based on the original drawings. Slight variations may occur during construction.

The illustrations shown are computer generated impressions of how the property may look and are indicative only. External details or finishes may vary on individual plots and homes may be built in either detached or attached styles depending on the development layout. Exact specifications, window styles and whether a property is left or right-handed may differ from plot to plot. Please speak to our sales consultant for specific plot details.

* Window applies to plot 318 only. Please see sales consultant for further details.

Produced by Vistry Group Design Studio.
When you have finished with this leaflet please recycle it.
130-TWIG DS06519 / 11.23

Linden HOMES



The Mylne

4 bedroom home

Twigworth Green

Twigworth, Gloucestershire GL2 9PQ | 01452 402751

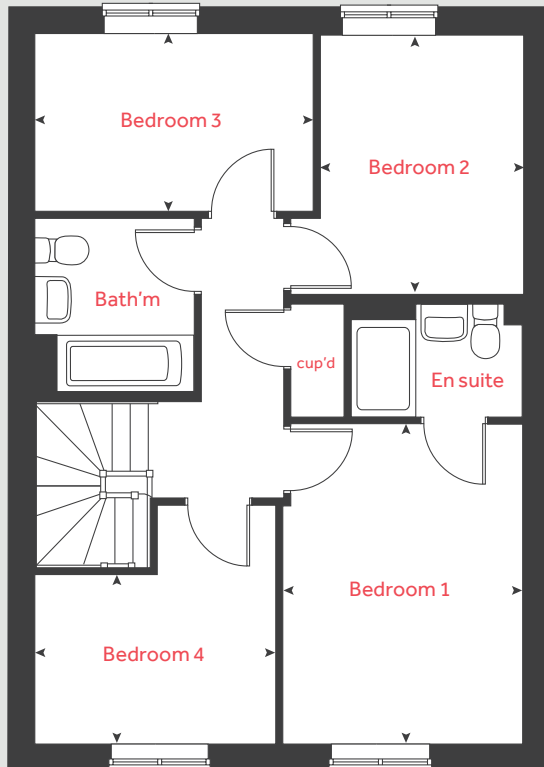
lindenhomes.co.uk

Linden
HOMES

The Mylne

4 bedroom home

First floor



| Ground floor | metres | feet / inches |
|--------------------------------|-------------|------------------|
| Kitchen / dining / family area | 6.08 x 3.80 | 19' 9" x 12' 5" |
| Living room | 4.83 x 3.39 | 15' 10" x 11' 2" |

First floor

| | | |
|-----------|-------------|-----------------|
| Bedroom 1 | 3.97 x 2.98 | 13' 0" x 9' 8" |
| Bedroom 2 | 3.20 x 2.56 | 10' 6" x 8' 2" |
| Bedroom 3 | 3.38 x 2.18 | 11' 3" x 7' 2" |
| Bedroom 4 | 3.09 x 2.08 | 9' 10" x 6' 10" |

| | | | |
|------|----------------------|-------|-----------------------|
| h | hob | ws | washing machine space |
| ovn | oven | cup'd | cupboard |
| ffzs | fridge freezer space | < > | measuring points |
| ds | dishwasher space | | |

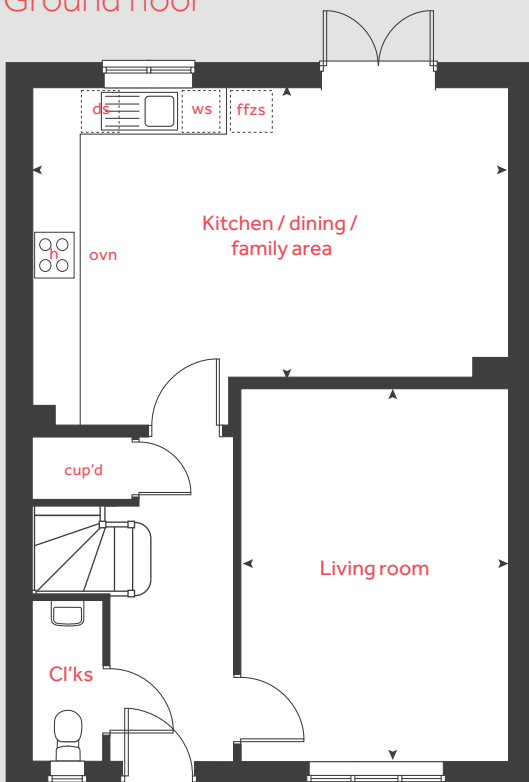
The Mylne | WTWIG |

The floorplan has been produced for illustrative purposes only. Room sizes shown are between arrow points as indicated on plan. The dimensions have tolerances of + or -50mm and should not be used other than for general guidance. If specific dimensions are required, enquiries should be made to the sales consultant. The floor plans shown are not to scale. Measurements are based on the original drawings. Slight variations may occur during construction.

The illustrations shown are computer generated impressions of how the property may look and are indicative only. External details or finishes may vary on individual plots and homes may be built in either detached or attached styles depending on the development layout. Exact specifications, window styles and whether a property is left or right-handed may differ from plot to plot. Please speak to our sales consultant for specific plot details.

Produced by Vistry Group Design Studio.
When you have finished with this leaflet please recycle it.
130-TWIG DS06519 / 11.23

Ground floor



Linden
HOMES



Specification

Twigworth Green

Twigworth, Gloucestershire GL2 9PQ | 01452 402751

lindenhomes.co.uk

Linden
HOMES

The specification shown in this leaflet is correct at the time of going to press. Linden Homes is continually reviewing and updating the specification on all housetypes and therefore reserves the right to change specification details. Photographs depict a typical Linden Homes interior and may include optional upgrades. For full details regarding current specification and finishes, for the plots you are interested in, please refer to our sales consultant.

When you have finished with this leaflet please recycle it.

Linden Homes, Cotswolds region

Cleeve Hall, Cheltenham Road, Bishops Cleeve, Cheltenham, Gloucestershire GL52 8GD. T: 01242 388502

Produced by the Vistry Group Design Studio. 130-TWIG DS06519 / 08.23

lindenhomes.co.uk

Linden
HOMES