



CHARLES  
PECK

Sales • Lettings • Valuers

**£1,400 PCM PCM**  
**10, Surtees Street, Chichester**

# 10 Surtees Street, Westhampnett, Chichester, West Sussex, PO18 0GU

A recently built (2022) two bedroom end of terrace house forming part of the popular Madgwick Park development in Westhampnett. The property comes with parking for two cars.

Available as a long term let, this bright and airy house comprises of modern kitchen with patio doors leading to the enclosed rear garden with storage shed. Lounge and ground floor WC. Stairs leading to two good sized bedrooms with built in storage to master room and family bathroom. Driveway parking with space for two vehicles. Side access to rear garden.

NO SMOKERS. NO

STUDENTS. NO PETS.  
DEPOSIT £1615.





10 Surtees Street  
Westhampnett  
Chichester  
PO18 0GU

Tenure

Council Tax Band  
D

Local Authority

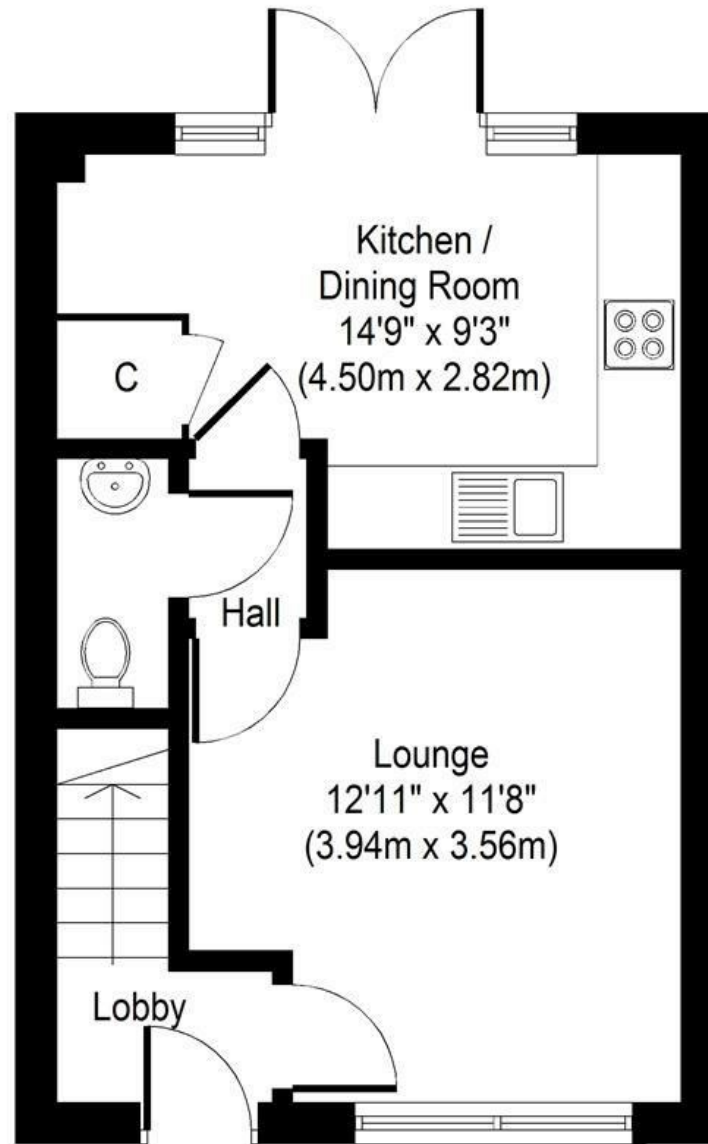
EPC rating  
B (84)

Charles Peck  
01243 816666  
charlespeck.co.uk

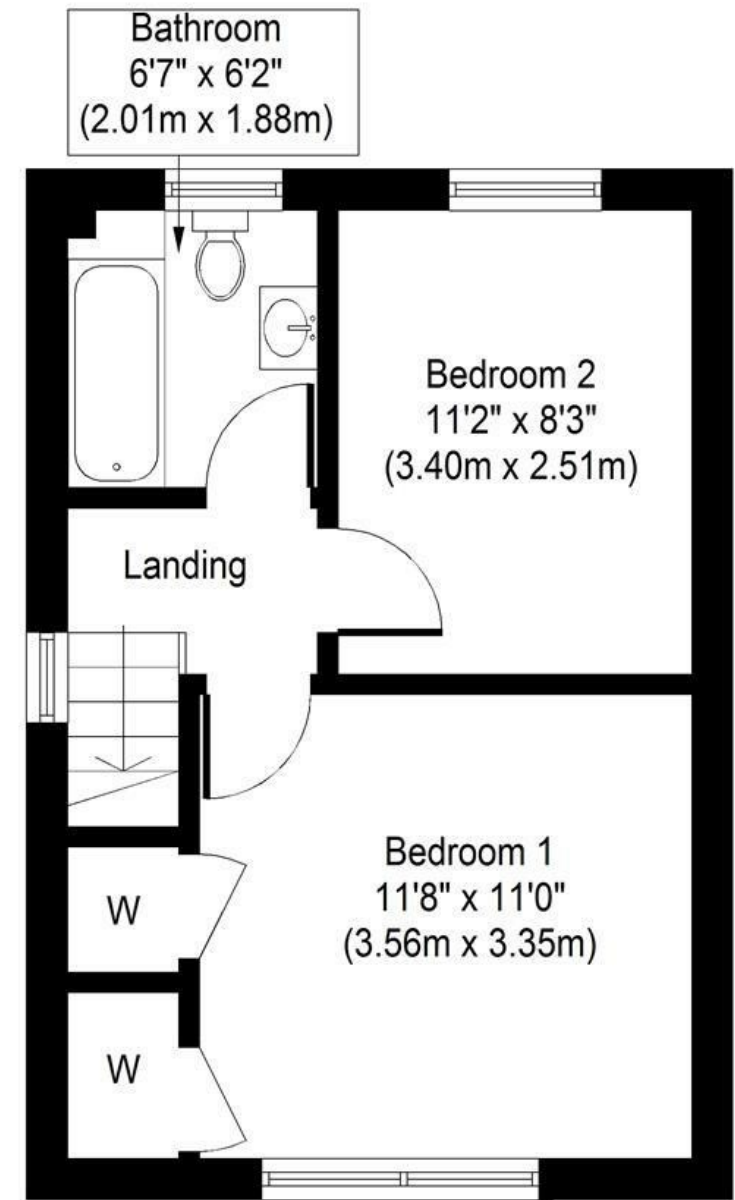
17 Southgate  
Chichester  
PO19 2ES

homes@charlecpeck.co.uk

NOTE - We have not tested any systems or appliances and no warranty as to condition or suitability is confirmed or implied. All measurements are approximate. If you would like advice to the value of your house or independent mortgage advice, please contact us 01243 816666 | homes@charlespeck.co.uk



**Ground Floor**  
**Approximate Floor Area**  
**332 Sq. ft.**  
**(30.8 Sq. m.)**



**First Floor**  
**Approximate Floor Area**  
**332 Sq. ft.**  
**(30.8 Sq. m.)**

Whilst every attempt has been made to ensure the accuracy of the floor plan contained here, measurements of doors, windows, rooms and any other items are approximate and no responsibility is taken for any error, omission, or mis-statement. This plan is for illustrative purposes only and should be used as such by any prospective purchaser or tenant. The services, systems and appliances shown have not been tested and no guarantee as to their operability or efficiency can be given.

Copyright V360 Ltd 2022 | www.houseviz.com