



CHARLES
PECK
Sales • Lettings • Valuers

£900
12 Providence Place, Chapel Street, Chichester

12 Providence Place Chapel Street, Chichester, PO19 1BS

OVER 60s ONLY A one bedroom, ground floor retirement flat, situated in this popular development in the heart of Chichester.

Entrance hall | Spacious living room |
Kitchen | Bedroom | Shower room |
Night storage heating | Double glazing |
Communal grounds | Laundry facilities |
House Manager | Guest suite

Location
The property stands in this central position in Chichester with all the city centre facilities within easy walking distance. Chichester has excellent cultural facilities including Pallant House Gallery, Chichester Festival Theatre and a mainline railway station with services to London Victoria. It is also well placed for access to the coast with beaches at Wittering and in the other direction is The Downs with sporting and other events at Goodwood.

Entrance hall

With airing cupboard housing the hot water tank and meters.

Spacious living room

Kitchen
With fitted drawers and cupboards, sink, electric hob and fridge.

Bedroom
With built-in wardrobe.

Shower room
With walk-in shower cubicle, hand wash basin vanity unit and WC.

Council tax band
B

DEPOSIT: £1038, NO PETS, NO SMOKERS.





12 Providence Place
Chapel Street
Chichester
PO19 1BS

Tenure

Council Tax Band

Local Authority

EPC rating
C (73)

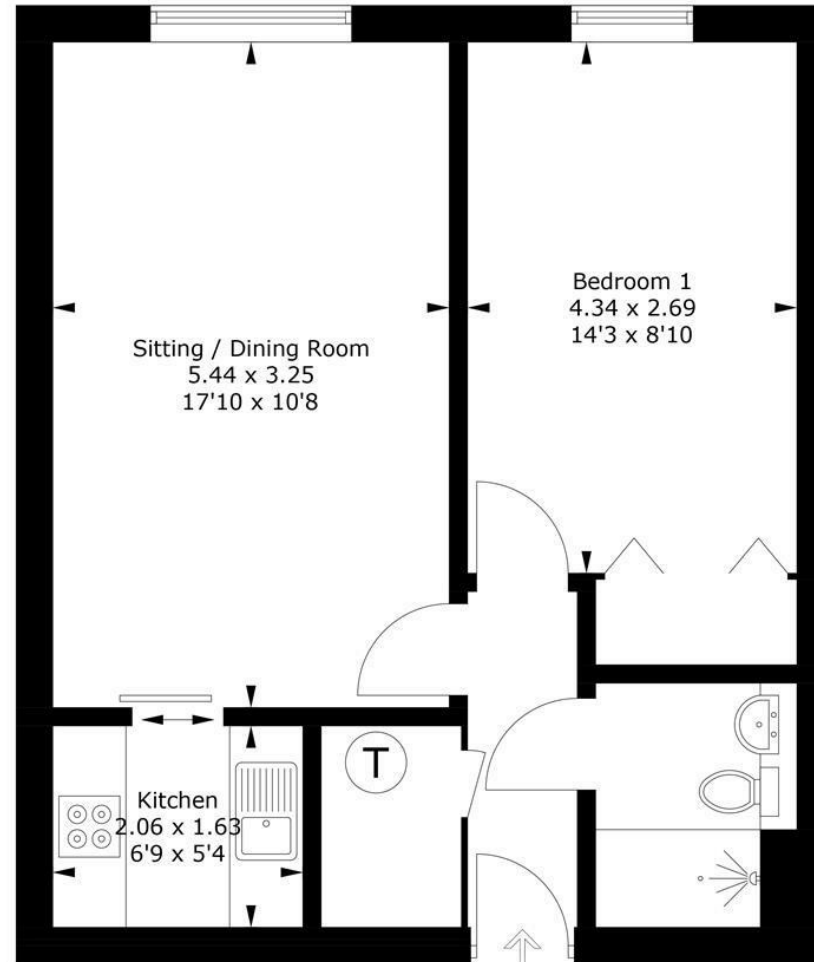
Charles Peck
01243 816666
charlespeck.co.uk
17 Southgate
Chichester
PO19 2ES

homes@charlecpeck.co.uk

NOTE - We have not tested any systems or appliances and no warranty as to condition or suitability is confirmed or implied. All measurements are approximate. If you would like advice to the value of your house or independent mortgage advice, please contact us 01243 816666 | homes@charlespeck.co.uk

Chapel Street, PO19

Approximate Gross Internal Area = 44.3 sq m / 477 sq ft



Ground Floor

PRODUCED BY CHARLES PECK

Whilst every attempt has been made to ensure the accuracy of the floorplan, measurements of doors, windows and rooms are approximate. These plans are for representation purposes only as defined by RICS Code of Measuring Practice and used as such by any prospective purchaser. (ID1105484)