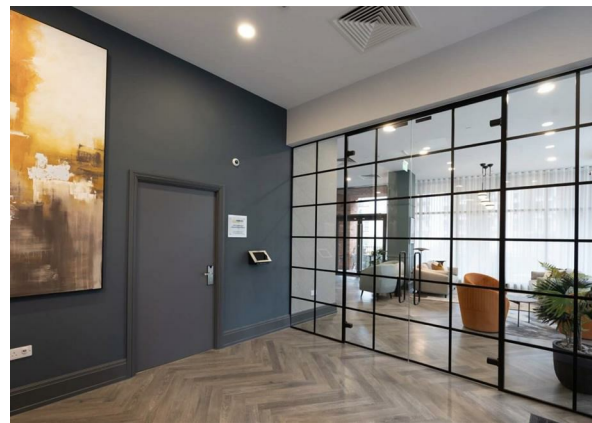
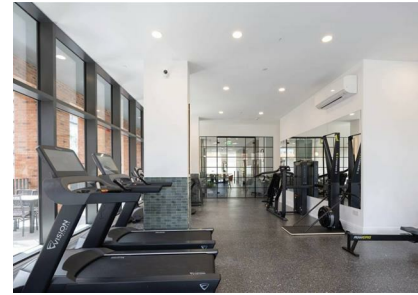


Pavilion Wharf, 160 Booth St, Manchester, M2 4AW

£313,360

Council Tax Band: New Build

ORLANDO REID
— MANCHESTER —



Perfectly located on the banks of the River Irwell, this new build, off-plan residential development, formerly known as Pavilion Wharf, is situated opposite Castlefield, Manchester. The high-specification 17-storey building, enhanced with Juliette balconies and a communal garden terrace, comprises 160 stunning waterside apartments offering impressive city and river views.

The development offers a comprehensive suite of on-site amenities, allowing residents to fully enjoy a twenty-first-century city lifestyle. This is an ideal opportunity to invest in the heart of Manchester city centre.

St Johns Court 19b Quay Street, Manchester, M3 3HN

01616760099

manchester@orlandoreid.co.uk

<https://www.orlandoreid.co.uk/manchester/>

Energy Efficiency Rating		
	Current	Potential
Very energy efficient - lower running costs		
(92 plus) A		
(81-91) B		
(69-80) C		
(55-68) D		
(39-54) E		
(21-38) F		
(1-20) G		
Not energy efficient - higher running costs		
England & Wales	EU Directive 2002/91/EC	