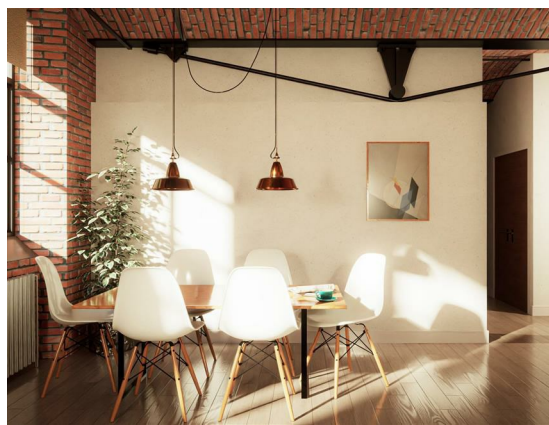
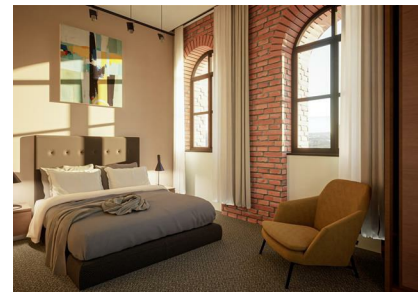
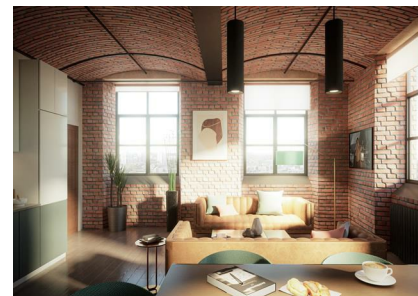


23 Pollard Street East, Manchester, M40 7QX

£239,950

Council Tax Band: New Build

ORLANDO REID
— MANCHESTER —



Historic Mill Conversion**

This beautiful one-bedroom apartment offers a unique and character-filled home, ideal for a wide range of tenants. You'll find plenty of local amenities right on your doorstep, along with unbeatable access to the city centre. Inside, the property boasts a bright open-plan kitchen and living space, a generously sized bedroom, a sleek bathroom, and stunning views looking out towards the city skyline.

Brunswick Mill is a striking Grade II Listed building, originally built in 1837. Once one of Manchester's largest working mills, it's even said to be the first in the UK to harness electricity as a power source. Over the

St Johns Court 19b Quay Street, Manchester, M3 3HN
01616760099
manchester@orlandoreid.co.uk
<https://www.orlandoreid.co.uk/manchester/>

