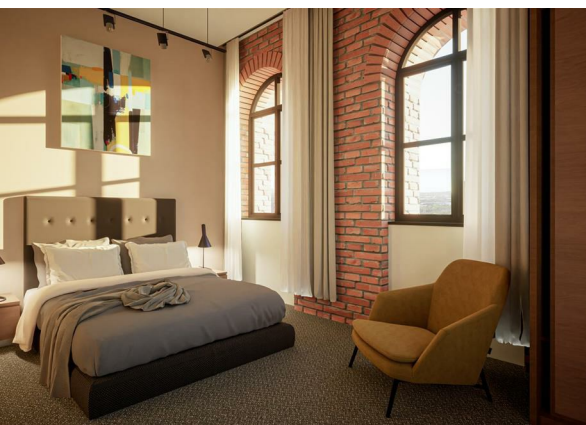
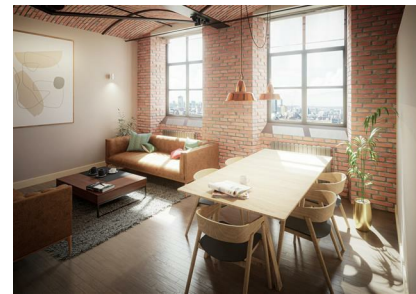


113 Bradford Road, Manchester, Greater Manchester, M40 7FY  
£252,525  
Council Tax Band: New Build

ORLANDO REID  
— MANCHESTER —





Own a part of history.

Brunswick Mill is stunning Grade II Listed mill conversion, dating all the way back to 1837! It was once one of the largest mills operating in Manchester, and reportedly was the first mill in the UK to adopt electricity as a source of power. It's also been home to rehearsal studios used by numerous iconic northern bands, and Liam Gallagher even filmed one of his music videos here.

This gorgeous one bedroom apartment offers a characteristic home for a wide range of tenants, with an abundance of nearby amenities and incredible access to the city centre. Featuring a spacious, open-plan kitchen

St Johns Court 19b Quay Street, Manchester, M3 3HN  
01616760099  
manchester@orlandoreid.co.uk  
<https://www.orlandoreid.co.uk/manchester/>



Energy Efficiency Rating		
	Current	Potential
Very energy efficient - lower running costs		
(92 plus) A		
(81-91) B		
(69-80) C		
(55-68) D		
(39-54) E		
(21-38) F		
(1-20) G		
Not energy efficient - higher running costs		
England & Wales		EU Directive 2002/91/EC