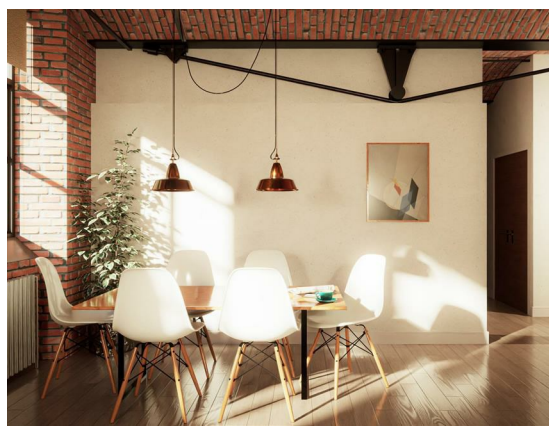
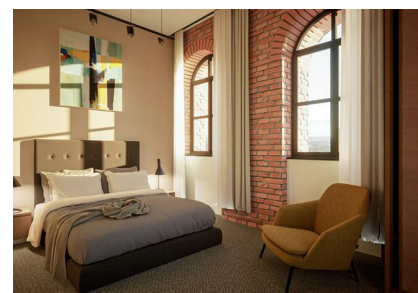
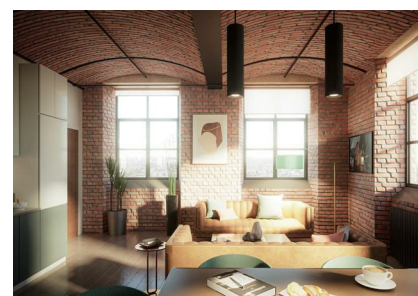


203 Bradford Road, Manchester, Greater Manchester, M40 7EY
£252,525
Council Tax Band: New Build

ORLANDO REID
— MANCHESTER —



Historic Mill Conversion**

This beautiful one-bedroom apartment offers a unique and character-filled home, ideal for a wide range of tenants. You'll find plenty of local amenities right on your doorstep, along with unbeatable access to the city centre. Inside, the property boasts a bright open-plan kitchen and living space, a generously sized bedroom, a sleek bathroom, and stunning views looking out towards the city skyline.

Brunswick Mill is a striking Grade II Listed building, originally built in 1837. Once one of Manchester's largest working mills, it's even said to be the first in the UK to harness electricity as a power source. Over the

St Johns Court 19b Quay Street, Manchester, M3 3HN
01616760099
manchester@orlandoreid.co.uk
<https://www.orlandoreid.co.uk/manchester/>



Energy Efficiency Rating		
	Current	Potential
Very energy efficient - lower running costs		
(92 plus) A		
(81-91) B		
(69-80) C		
(55-68) D		
(39-54) E		
(21-38) F		
(1-20) G		
Not energy efficient - higher running costs		
England & Wales		EU Directive 2002/91/EC