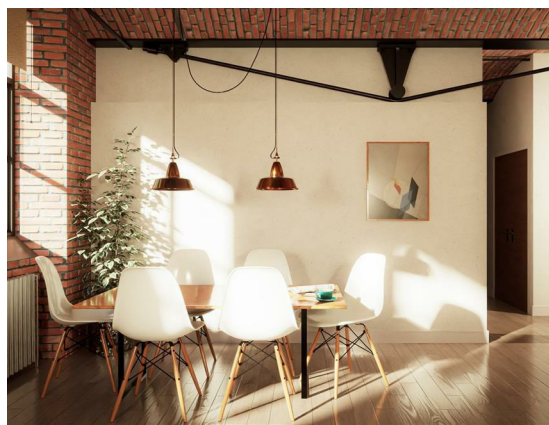
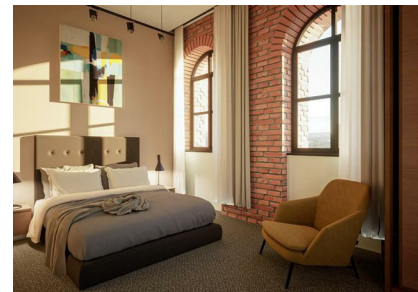
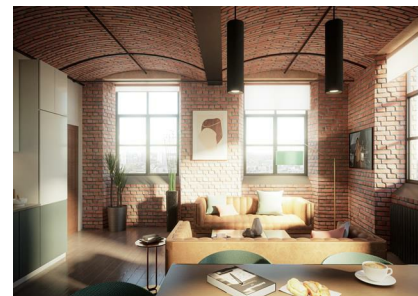


310 Bradford Road, Manchester, Greater Manchester, M40 7EY
£353,535
Council Tax Band: New Build

ORLANDO REID
— MANCHESTER —



Grade II Listed Mill Conversion**

This gorgeous two-bedroom apartment offers a characteristic home for a wide range of tenants, with an abundance of nearby amenities and incredible access to the city centre. Featuring a spacious, open-plan kitchen and living area, two large bedrooms, a shared bathroom and en-suite, and amazing double-aspect views.

Brunswick Mill is stunning Grade II Listed mill conversion, dating all the way back to 1837! It was once one of the largest mills operating in Manchester, and reportedly was the first mill in the UK to adopt electricity

St Johns Court 19b Quay Street, Manchester, M3 3HN
01616760099
manchester@orlandoreid.co.uk
<https://www.orlandoreid.co.uk/manchester/>



Energy Efficiency Rating		
	Current	Potential
Very energy efficient - lower running costs		
(92 plus) A		
(81-91) B		
(69-80) C		
(55-68) D		
(39-54) E		
(21-38) F		
(1-20) G		
Not energy efficient - higher running costs		
England & Wales		EU Directive 2002/91/EC