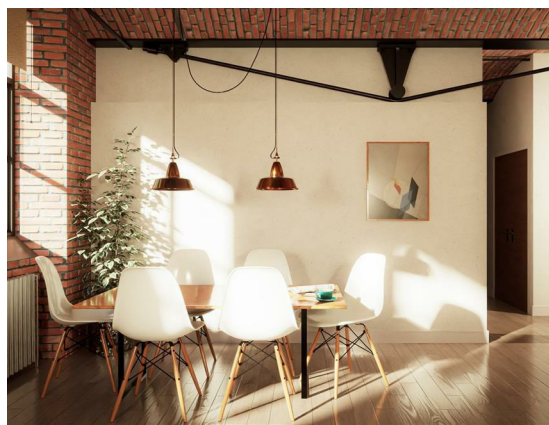
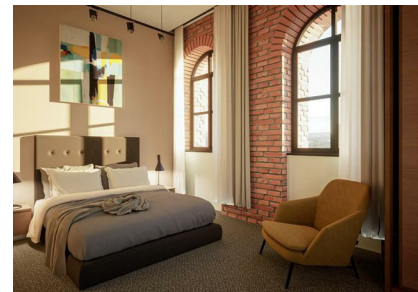
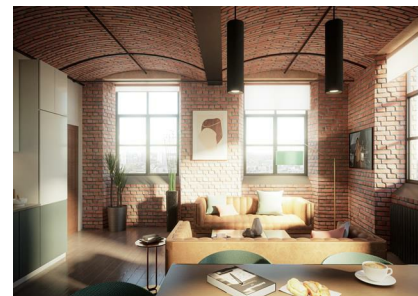


1 Bradford Road, Manchester, M40 7EY  
£360,000  
Council Tax Band: New Build

ORLANDO REID  
— MANCHESTER —





Exposed Brickwork Ceilings\*\*

This gorgeous two-bedroom apartment offers a characteristic home for a wide range of tenants, with an abundance of nearby amenities and incredible access to the city centre. Featuring a spacious, open-plan kitchen and living area, two large bedrooms, a shared bathroom and en-suite, and amazing canal-facing views.

Brunswick Mill is stunning Grade II Listed mill conversion, dating all the way back to 1837! It was once one of the largest mills operating in Manchester, and reportedly was the first mill in the UK to adopt electricity

St Johns Court 19b Quay Street, Manchester, M3 3HN  
01616760099  
manchester@orlandoreid.co.uk  
<https://www.orlandoreid.co.uk/manchester/>



Energy Efficiency Rating		
	Current	Potential
Very energy efficient - lower running costs		
(92 plus) A		
(81-91) B		
(69-80) C		
(55-68) D		
(39-54) E		
(21-38) F		
(1-20) G		
Not energy efficient - higher running costs		
England & Wales		EU Directive 2002/91/EC