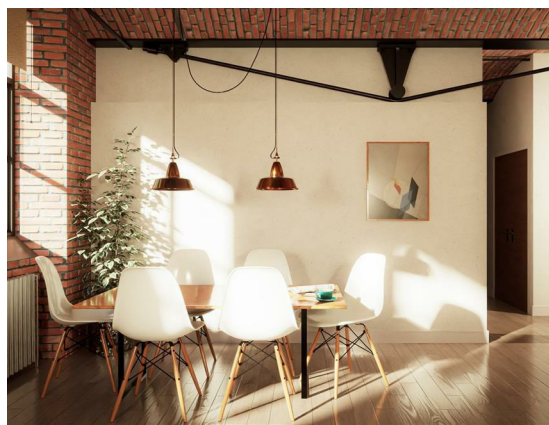
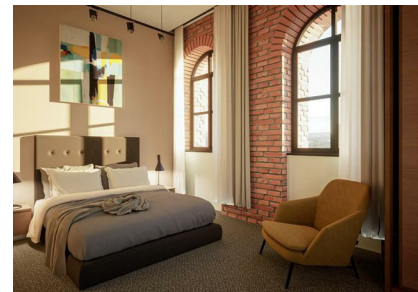
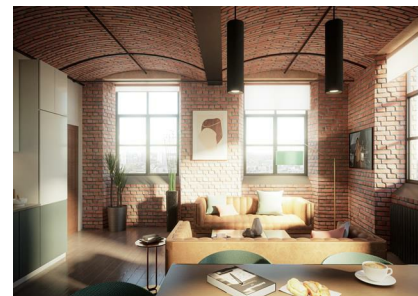


608 Bradford Road, Manchester, Greater Manchester, M40 7EY
£267,677
Council Tax Band: New Build

ORLANDO REID
— MANCHESTER —



19th CENTURY MILL CONVERSION

This gorgeous one-bedroom apartment offers a characteristic home for a wide range of tenants, with an abundance of nearby amenities and incredible access to the city centre. Featuring a spacious, open-plan kitchen and living area, a large bedroom, high-specification bathroom, and amazing canal-facing views.

Brunswick Mill is stunning Grade II Listed mill conversion, dating all the way back to 1837! It was once one of the largest mills operating in Manchester, and reportedly was the first mill in the UK to adopt electricity

St Johns Court 19b Quay Street, Manchester, M3 3HN
01616760099
manchester@orlandoreid.co.uk
<https://www.orlandoreid.co.uk/manchester/>



| Energy Efficiency Rating | | |
|---|-------------------------|-----------|
| | Current | Potential |
| Very energy efficient - lower running costs | | |
| (92 plus) A | | |
| (81-91) B | | |
| (69-80) C | | |
| (55-68) D | | |
| (39-54) E | | |
| (21-38) F | | |
| (1-20) G | | |
| Not energy efficient - higher running costs | | |
| England & Wales | EU Directive 2002/91/EC | |