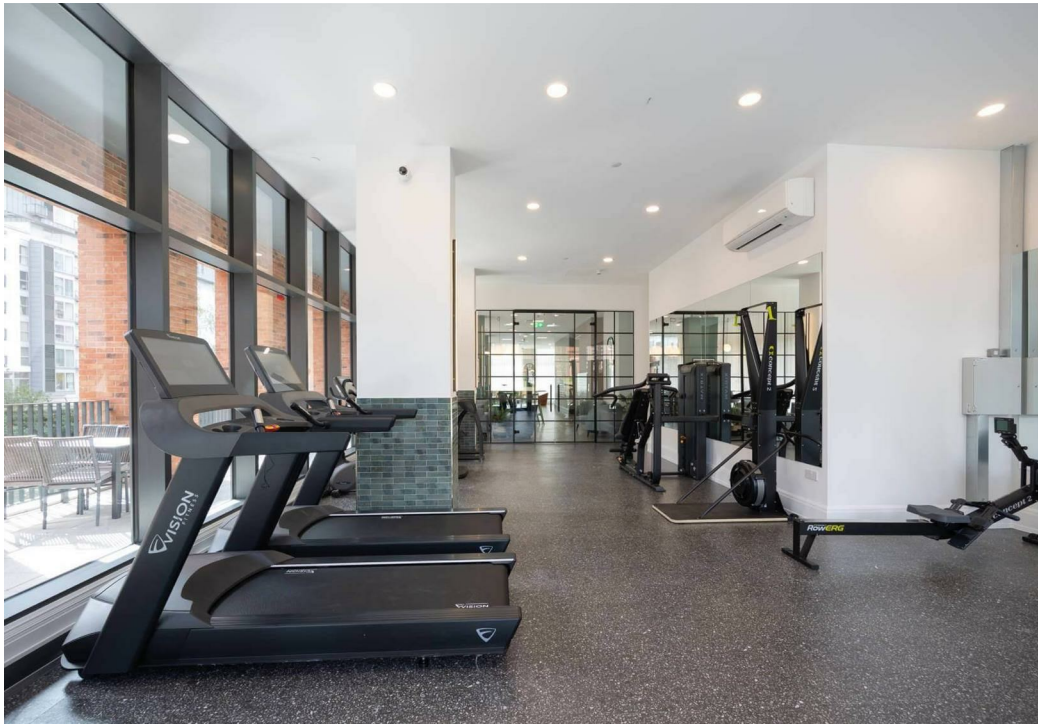
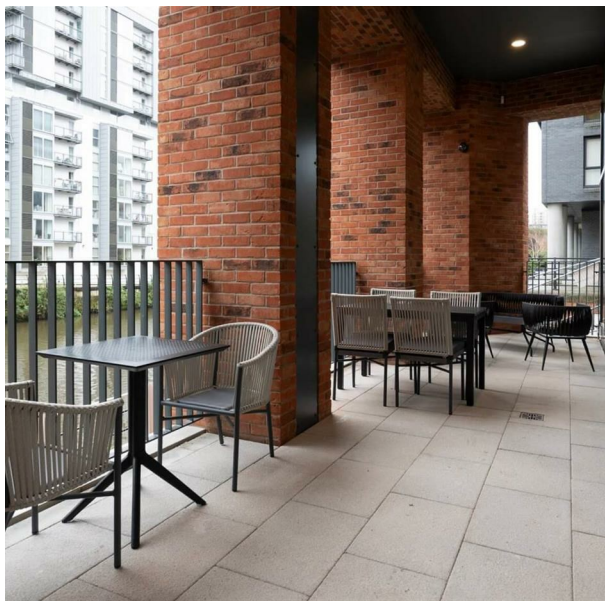


Silkbank Wharf, 1605 Derwent street, Salford, Manchester, Greater Manchester,
M5 4EP
£355,000

ORLANDO REID
— MANCHESTER —



Welcome to Pavilion Wharf, now known as Silkbank Wharf, a stunning new residential development perfectly located on the banks of the River Irwell, opposite Castlefield, Manchester. This high-specification 17-storey building features 160 beautifully designed waterside apartments, offering breathtaking views of both the city and the river. Each apartment boasts a Juliette balcony and access to a communal garden terrace, providing a serene escape in the heart of the city. The development includes a range of amenities such as ultra-fast broadband, secure electronic access with CCTV, and the option for on-site parking. Silkbank Wharf is the epitome of modern city living, combining convenience, luxury, and security in an unbeatable location.

Inside, the apartments are finished to an exceptional standard, featuring wood-effect plank flooring, stainless steel switches, and electric heating with flat panel heaters throughout. The living areas are bright and

ORLANDO REID
— MANCHESTER —

St Johns Court 19b Quay Street, Manchester, M3 3HN

01616760099

manchester@orlandoreid.co.uk

<https://www.orlandoreid.co.uk/manchester/>

Energy Efficiency Rating		
	Current	Potential
<i>Very energy efficient - lower running costs</i>		
(92 plus) A		
(81-91) B		
(69-80) C		
(55-68) D		
(39-54) E		
(21-38) F		
(1-20) G		
<i>Not energy efficient - higher running costs</i>		
England & Wales	EU Directive 2002/91/EC	