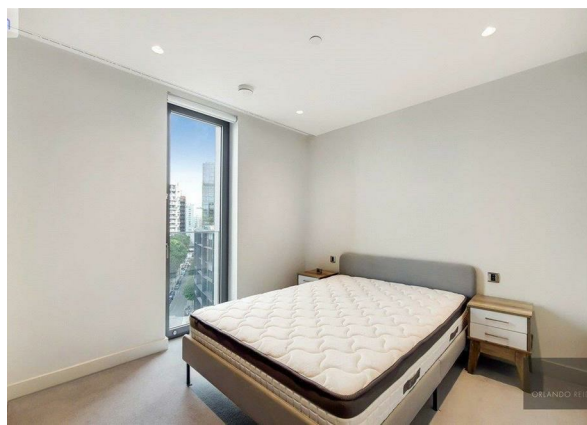
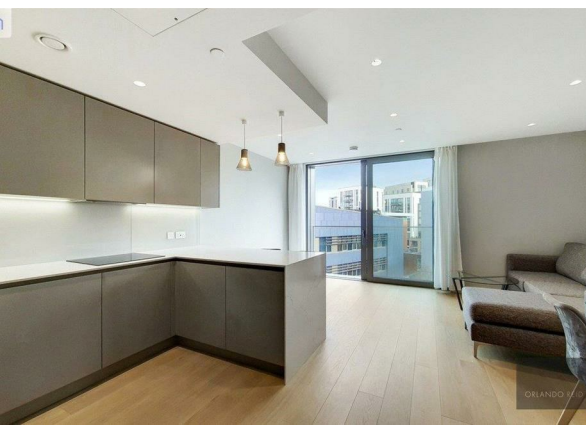
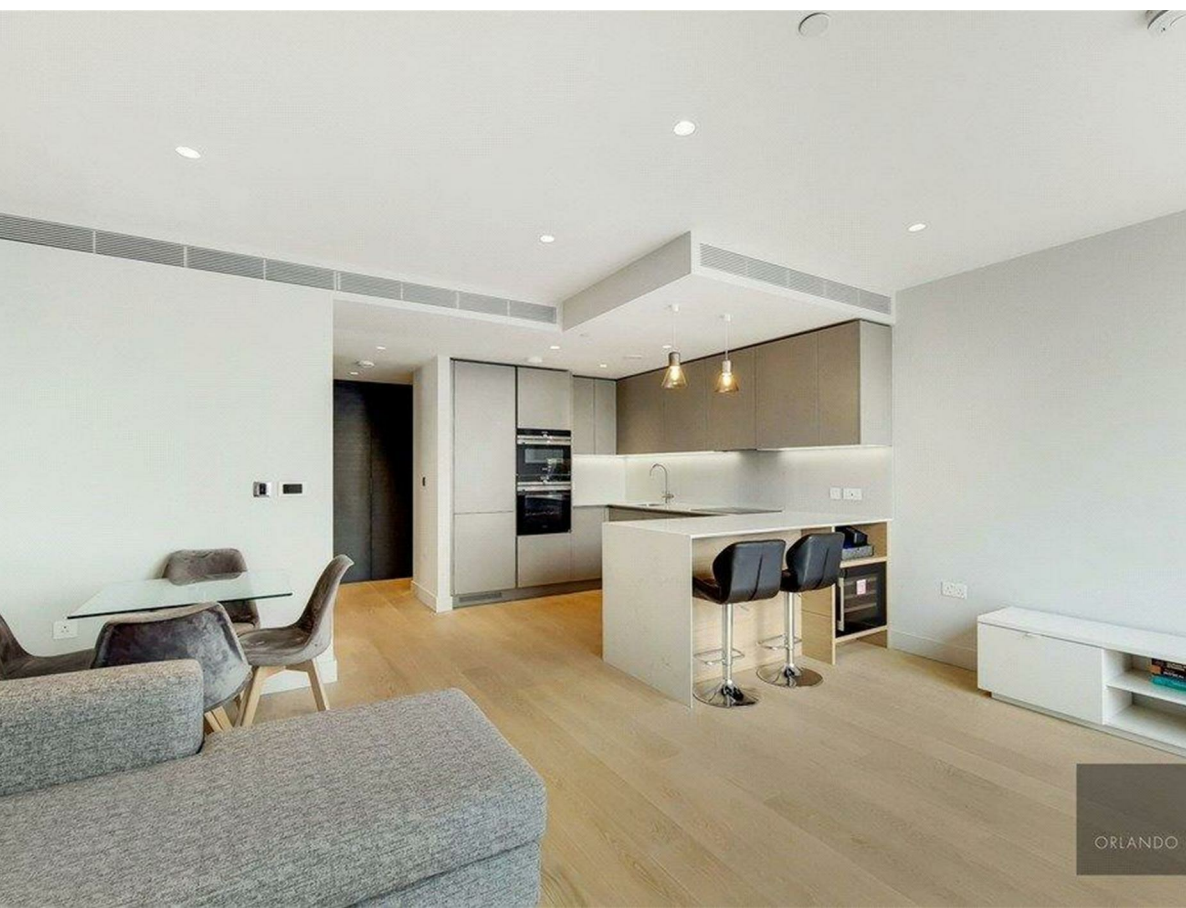


100 New Islington Apartments, Manchester, M11 2LY

Asking Price £349,999

Council Tax Band: New Build

ORLANDO REID
— MANCHESTER —



New Islington Apartments is located in the heart of Manchester and will be next to the brand-new HS2 station. This fully-realised home space will transform modern city living and expand the possibilities of what it means to be a city-dweller. This development will be completed in early 2024. The development holds 177 one, two, and three-bedroom apartments which will be spread across 25 storeys and finished to the highest standard. Residents will access fantastic amenities with a cosy work-from-home station, gymnasium, and communal garden. **PROPERTY HIGHLIGHTS*** Residence lounge* Gymnasium* Co-working spaces* Rooftop terrace* 5-minute walk from Piccadilly Station **AREA** New Islington represents one of the largest development opportunities in the UK and has the potential to make a significant impact on both the growth of the city and also the national economy. The area includes Piccadilly Station, Piccadilly Basin, and Portugal Street East. Following redevelopment, it is anticipated that the proposed new investment in the area could bring up to 40,000 new jobs, 13,000 new homes, and 820,000 square meters of new commercial development. The new HS2 station will be situated just a 5-minute walk away from this development - journey time to London will be just 50 minutes! **MANCHESTER INSIGHTS*** House prices in the North West region have been predicted to increase by a huge 28.8% by 2025.

ORLANDO REID

— M A N C H E S T E R —

St Johns Court 19b Quay Street, Manchester, M3 3HN

01616760099

manchester@orlandoreid.co.uk

<https://www.orlandoreid.co.uk/manchester/>

