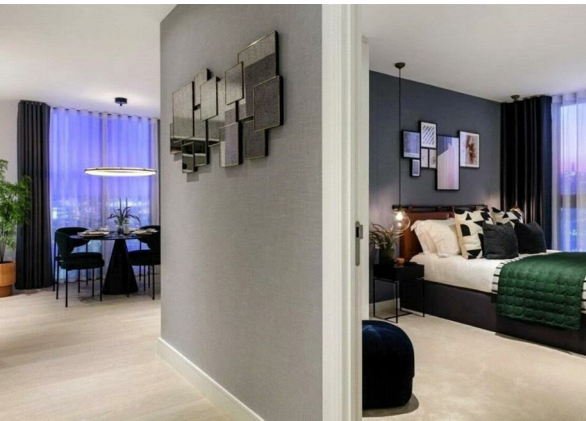


Slate Heights, 191 Slate Street, Castlefield, Manchester, Greater Manchester,
M15 4SZ
£350,000

ORLANDO REID
— MANCHESTER —



This stunning investment property presents a rare opportunity to own a slice of contemporary luxury in a prime central location. Situated in a new build development, this residence embodies the perfect fusion of modern design and convenience, making it an ideal choice for discerning investors.

This sleek and stylish apartment boasts a thoughtfully crafted layout, featuring two bedrooms and two bathrooms. With meticulous attention to detail, the interiors showcase high-end finishes, creating an inviting and comfortable atmosphere. Floor-to-ceiling windows flood the living spaces with natural light, providing panoramic views of the dynamic cityscape.

ORLANDO REID

— M A N C H E S T E R —

St Johns Court 19b Quay Street, Manchester, M3 3HN

01616760099

manchester@orlandoreid.co.uk

<https://www.orlandoreid.co.uk/manchester/>

Energy Efficiency Rating		
	Current	Potential
<i>Very energy efficient - lower running costs</i>		
(92 plus) A		
(81-91) B		
(69-80) C		
(55-68) D		
(39-54) E		
(21-38) F		
(1-20) G		
<i>Not energy efficient - higher running costs</i>		
England & Wales	EU Directive 2002/91/EC	