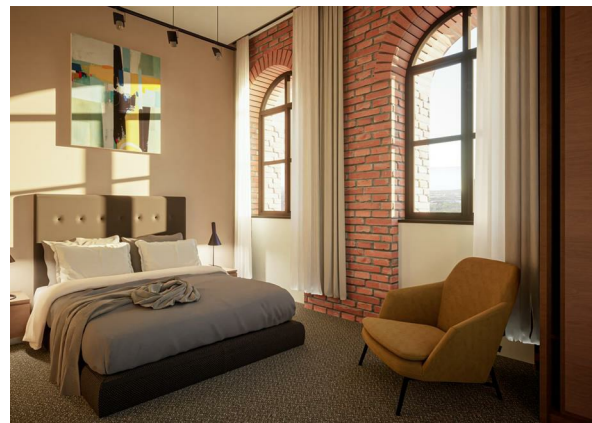
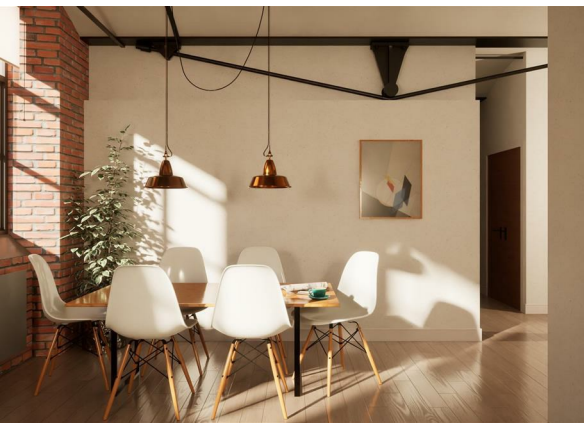


Brunswick Mill, 293 Bradford Road, Manchester, Manchester, Manchester, M40

7EZ

£340,000

ORLANDO REID
— MANCHESTER —



OFF PLAN DEVELOPMENT - Brunswick Mill, nestled in the emerging neighbourhood of New Islington, Manchester, will soon boast 153 captivating apartments. Set to be completed in Q1 2026, this remarkable Grade II listed edifice will showcase 153 distinctively designed apartments, seamlessly integrated into the fabric of the existing mill, catering to both first-time buyers and savvy investors alike.

This particular two-bedroom flat, positioned on the 6th floor of the development, offers South West facing water views of the canal. Spanning 831 sqft, it presents an ideal opportunity for an owner occupier wanting a spacious apartment or an investor wanting both capital growth and high rental returns. Boasting warmth, contemporary design, and meticulous craftsmanship, each unit is characterized by lofty ceilings and ample windows, ensuring an abundance of natural light.

ORLANDO REID

— MANCHESTER —

St Johns Court 19b Quay Street, Manchester, M3 3HN

01616760099

manchester@orlandoreid.co.uk

<https://www.orlandoreid.co.uk/manchester/>

Energy Efficiency Rating		
	Current	Potential
Very energy efficient - lower running costs		
(92 plus) A		
(81-91) B		
(69-80) C		
(55-68) D		
(39-54) E		
(21-38) F		
(1-20) G		
Not energy efficient - higher running costs		
England & Wales	EU Directive 2002/91/EC	