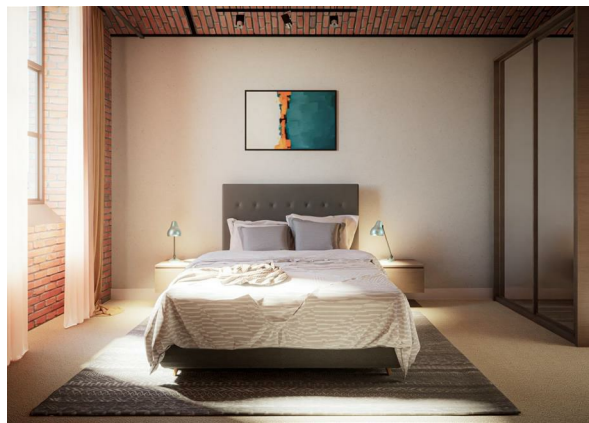
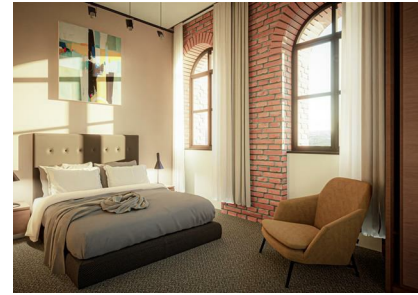


Brunswick Mill, 381 Bradford Road, Manchester, M40 7EZ

£340,000

Council Tax Band: New Build

ORLANDO REID
— MANCHESTER —



OFF PLAN DEVELOPMENT

Brunswick Mill, nestled in the emerging neighbourhood of New Islington, Manchester, will soon boast 153 captivating apartments. Set to be completed in Q1 2026, this remarkable Grade II listed edifice will showcase 153 distinctively designed apartments, seamlessly integrated into the fabric of the existing mill, catering to both first-time buyers and savvy investors alike.

This particular two-bedroom apartment offers South West facing water views of the canal. Spanning 831 sqft, it presents an ideal opportunity for an owner occupier wanting a spacious apartment or an investor

ORLANDO REID
— MANCHESTER —

St Johns Court 19b Quay Street, Manchester, M3 3HN

01616760099

manchester@orlandoreid.co.uk

<https://www.orlandoreid.co.uk/manchester/>

Energy Efficiency Rating		
	Current	Potential
Very energy efficient - lower running costs		
(92 plus) A		
(81-91) B		
(69-80) C		
(55-68) D		
(39-54) E		
(21-38) F		
(1-20) G		
Not energy efficient - higher running costs		
England & Wales	EU Directive 2002/91/EC	