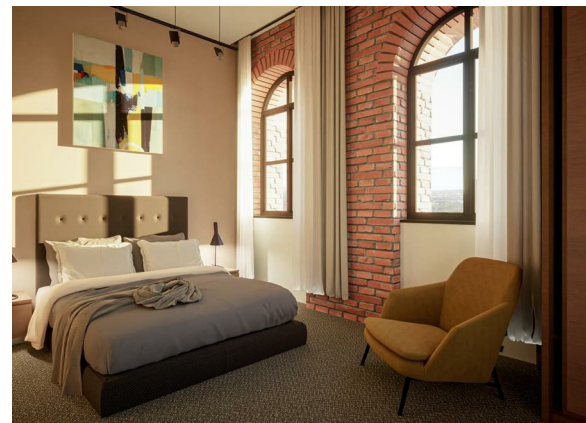
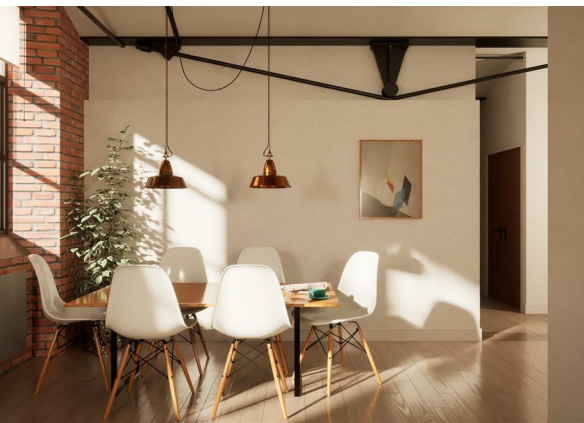
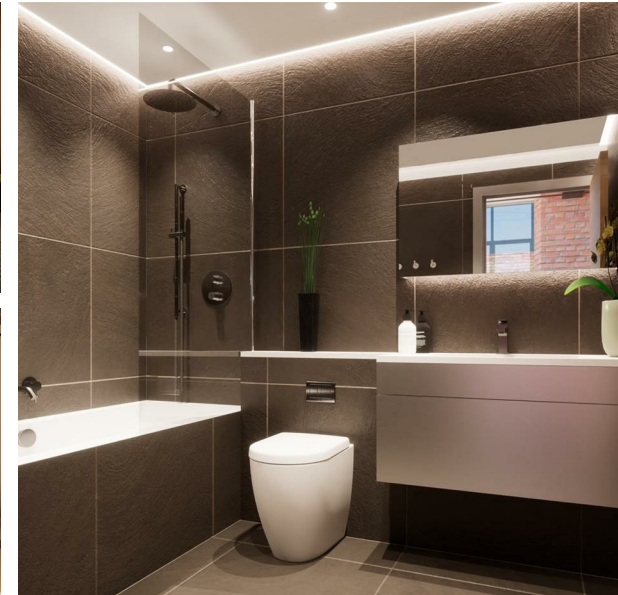
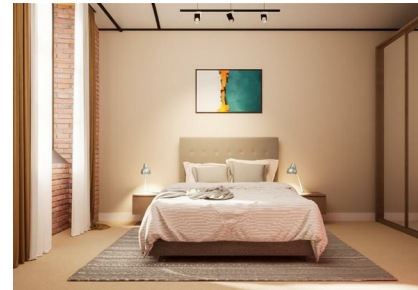


Brunswick Mill, 3344 Bradford Road, Manchester, M40 7EZ

£334,950

Council Tax Band: New Build

ORLANDO REID
— MANCHESTER —



OFF PLAN DEVELOPMENT - Brunswick Mill

Nestled in the emerging neighbourhood of New Islington, Manchester, Brunswick Mill will soon boast 153 captivating apartments. Set to be completed in Q1 2026, this remarkable Grade II listed edifice will showcase 153 distinctively designed apartments, seamlessly integrated into the fabric of the existing mill, catering to both first-time buyers and savvy investors alike.

This particular two-bedroom, one-bathroom flat, offers South West facing water views of the canal. Spanning 831 sqft, it presents an ideal opportunity for an owner-occupier wanting a spacious apartment or an

ORLANDO REID

— MANCHESTER —

St Johns Court 19b Quay Street, Manchester, M3 3HN

01616760099

manchester@orlandoreid.co.uk

<https://www.orlandoreid.co.uk/manchester/>

Energy Efficiency Rating		
	Current	Potential
Very energy efficient - lower running costs		
(92 plus) A		
(81-91) B		
(69-80) C		
(55-68) D		
(39-54) E		
(21-38) F		
(1-20) G		
Not energy efficient - higher running costs		
England & Wales	EU Directive 2002/91/EC	