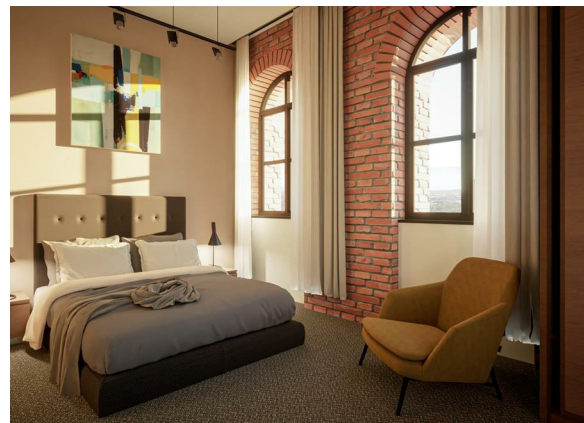
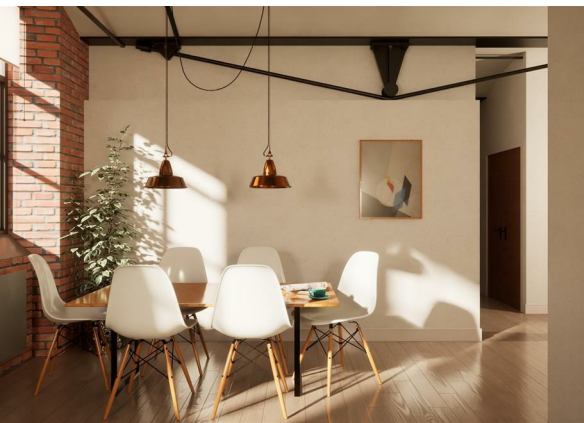


Brunswick Mill, 2299 Bradford Road, Manchester, M40 7EZ

£229,950

Council Tax Band: New Build

ORLANDO REID  
— MANCHESTER —



OFF PLAN DEVELOPMENT - Brunswick Mill

Nestled in the emerging neighbourhood of New Islington, Manchester, Brunswick Mill will soon boast 153 captivating apartments. Set to be completed in Q1 2026, this remarkable Grade II listed edifice will showcase distinctively designed apartments, seamlessly integrated into the fabric of the existing mill, catering to both first-time buyers and savvy investors alike.

This particular one-bedroom flat, positioned on the 6th floor of the development, offers South West facing water views of the canal. Spanning 831 sqft, it presents an ideal opportunity for an owner-occupier wanting

# ORLANDO REID

— MANCHESTER —

St Johns Court 19b Quay Street, Manchester, M3 3HN

01616760099

[manchester@orlandoreid.co.uk](mailto:manchester@orlandoreid.co.uk)

<https://www.orlandoreid.co.uk/manchester/>

Energy Efficiency Rating		
	Current	Potential
Very energy efficient - lower running costs		
(92 plus) <b>A</b>		
(81-91) <b>B</b>		
(69-80) <b>C</b>		
(55-68) <b>D</b>		
(39-54) <b>E</b>		
(21-38) <b>F</b>		
(1-20) <b>G</b>		
Not energy efficient - higher running costs		
<b>England &amp; Wales</b>	EU Directive 2002/91/EC	