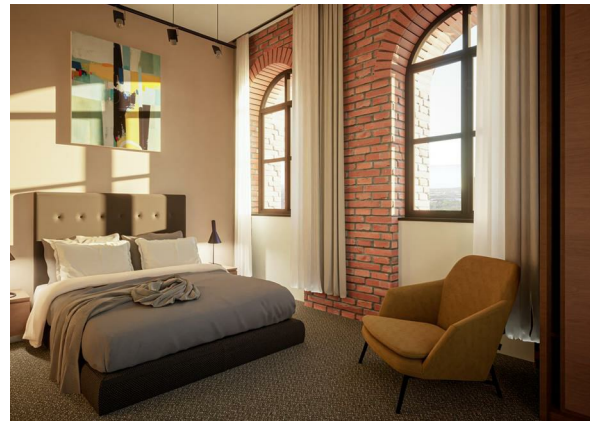
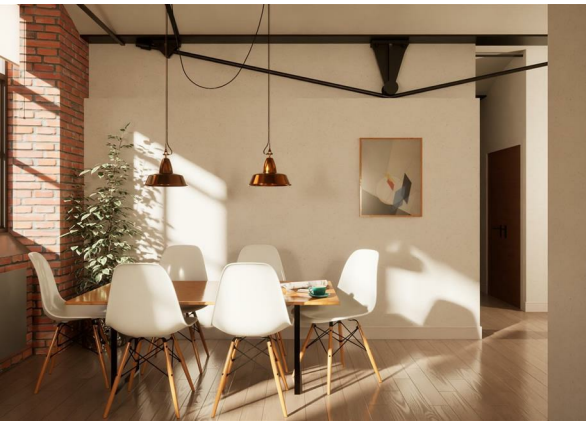
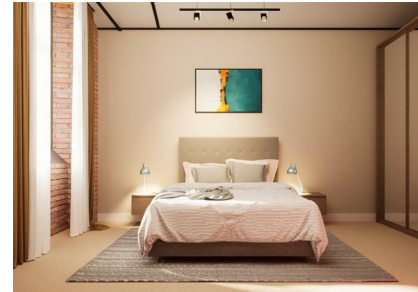


Brunswick Mill, 229 Bradford Rd, Manchester, M40 7EZ

£229,950

Council Tax Band: New Build

ORLANDO REID
— MANCHESTER —



OFF PLAN DEVELOPMENT - Brunswick Mill

Nestled in the emerging neighbourhood of New Islington, Manchester, Brunswick Mill will soon boast 153 captivating apartments. Set to be completed in Q1 2026, this remarkable Grade II listed edifice will showcase distinctively designed apartments, seamlessly integrated into the fabric of the existing mill, catering to both first-time buyers and savvy investors alike.

This particular one-bedroom flat, positioned on the 6th floor of the development, offers South West facing water views of the canal. Spanning 831 sqft, it presents an ideal opportunity for an owner-occupier wanting

St Johns Court 19b Quay Street, Manchester, M3 3HN

01616760099

manchester@orlandoreid.co.uk

<https://www.orlandoreid.co.uk/manchester/>

Energy Efficiency Rating		
	Current	Potential
<i>Very energy efficient - lower running costs</i>		
(92 plus) A		
(81-91) B		
(69-80) C		
(55-68) D		
(39-54) E		
(21-38) F		
(1-20) G		
<i>Not energy efficient - higher running costs</i>		
England & Wales	EU Directive 2002/91/EC	