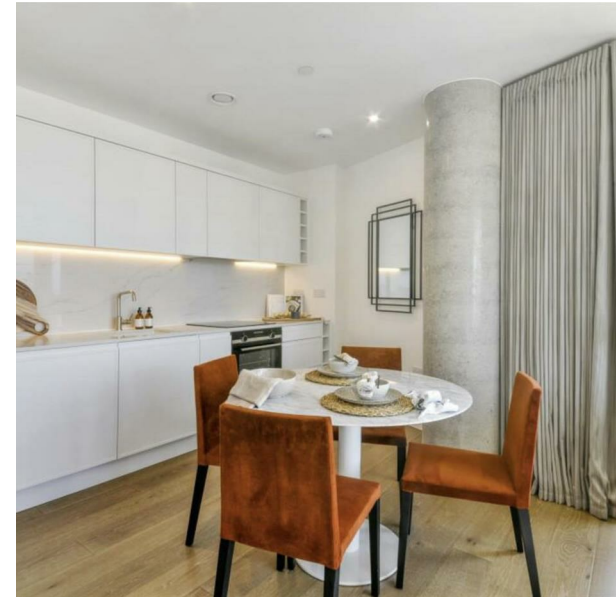


Elizabeth Tower, 80 Chester Rd., Manchester, M15 4AF

£450,000

Council Tax Band: New Build

ORLANDO REID  
— MANCHESTER —



INVESTOR ONLY - OFF PLAN DEVELOPMENT

This luxury apartment is located in the heart of Manchester, set in the most sought-after prime location in central Manchester. This stunning, spacious two-bedroom apartment exudes luxury with its open-plan design, abundant natural light, and high-end kitchen appliances.

The tower offers an array of premium amenities, including gym. It is conveniently located very close to Deansgate Train Station and Metrolink stop, Oxford Road Train Station, and Spinningfields area, known for its cool bars and restaurants. This is an exceptional opportunity to invest in a luxurious off-plan property in the heart of Manchester.


ORLANDO REID  
— MANCHESTER —

St Johns Court 19b Quay Street, Manchester, M3 3HN

01616760099

[manchester@orlandoreid.co.uk](mailto:manchester@orlandoreid.co.uk)

<https://www.orlandoreid.co.uk/manchester/>

| Energy Efficiency Rating                           |                            |   |
|--|----------------------------|---|
|  | Current                    | Potential   |
| <i>Very energy efficient - lower running costs</i> |                            |   |
| (92 plus) <b>A</b>                                 |                            |   |
| (81-91) <b>B</b>                                   |                            |   |
| (69-80) <b>C</b>                                   |                            |   |
| (55-68) <b>D</b>                                   |                            |   |
| (39-54) <b>E</b>                                   |                            |   |
| (21-38) <b>F</b>                                   |                            |   |
| (1-20) <b>G</b>                                    |                            |   |
| <i>Not energy efficient - higher running costs</i> |                            |   |
| <b>England &amp; Wales</b>                         | EU Directive<br>2002/91/EC |  |