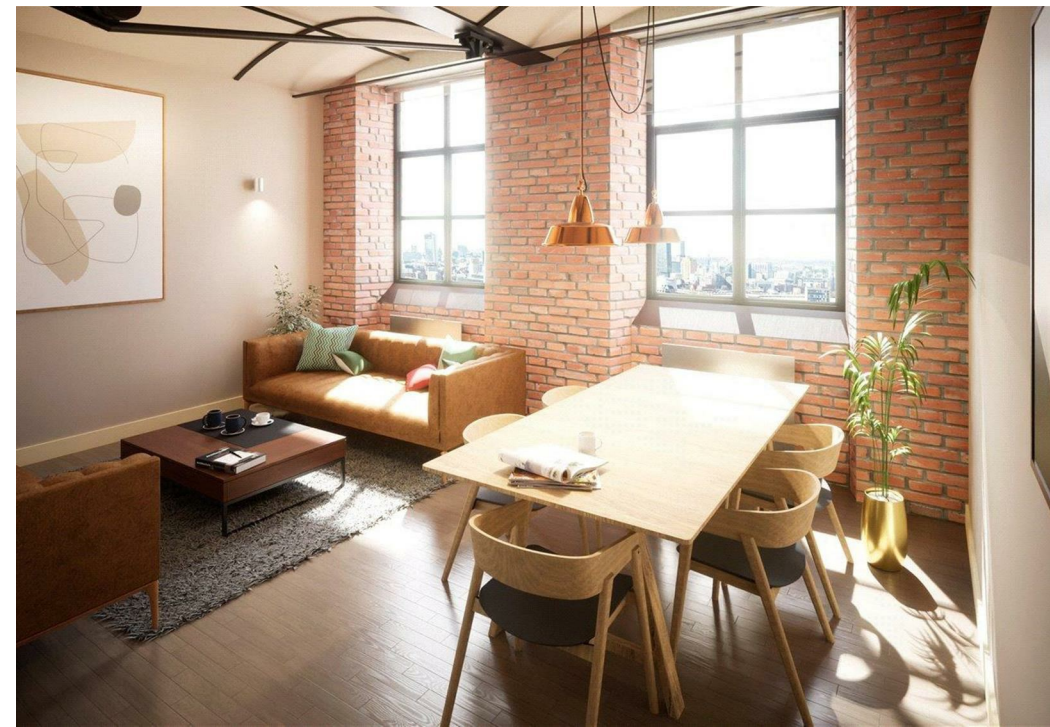
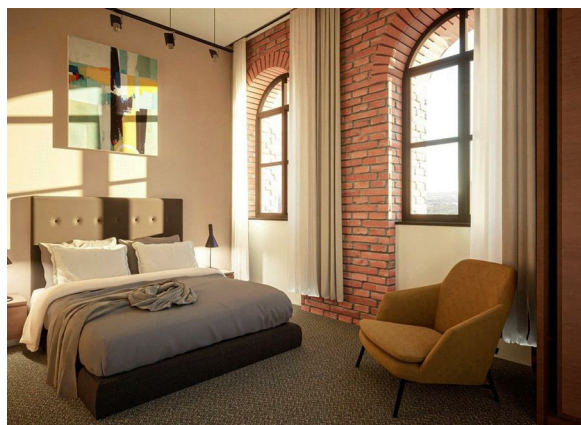
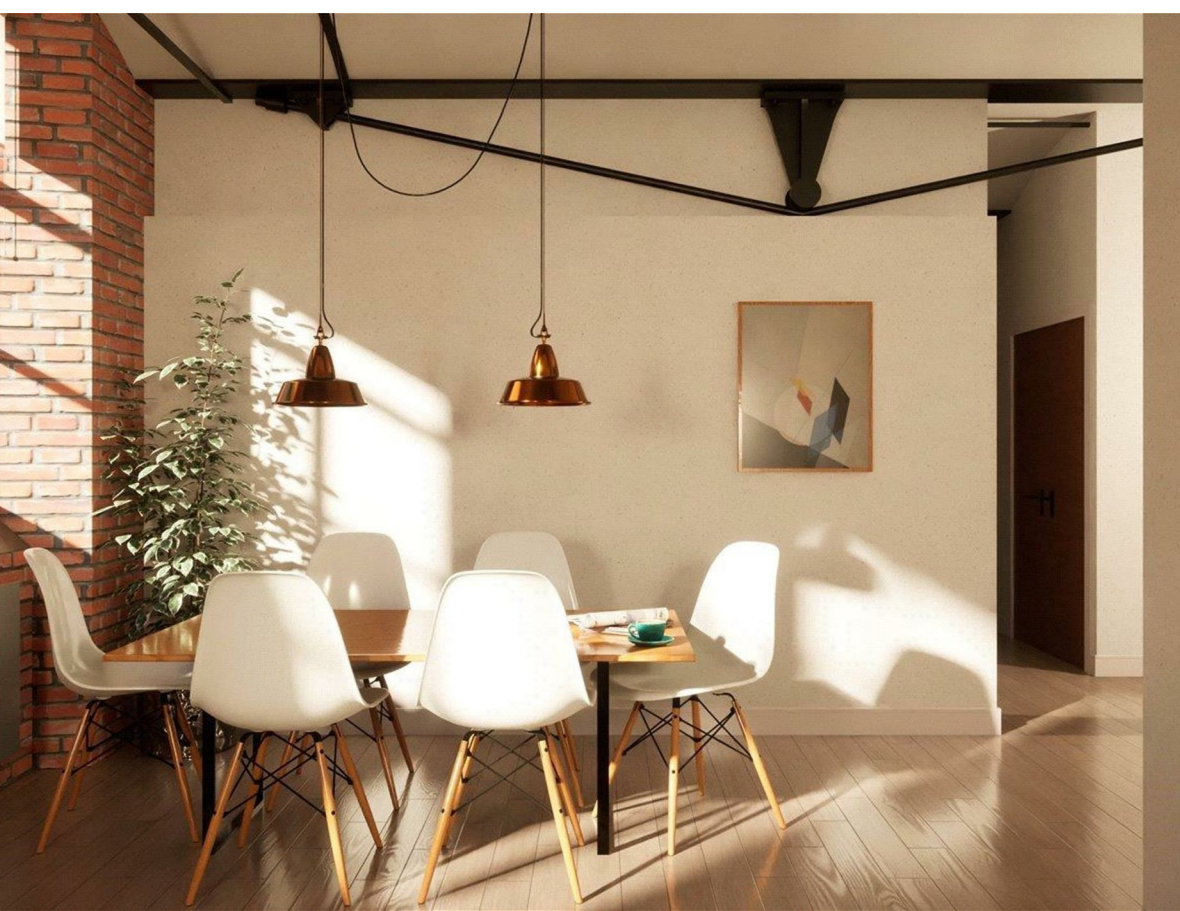


100 Brunswick Mill, New Islington, Manchester, M46GA

Asking Price £235,000

Council Tax Band: New Build

ORLANDO REID
— MANCHESTER —



Manchester latest investment opportunity!

Brunswick Mill will be home to 153 characterful apartments in the up-and-coming area of New Islington, Manchester. When complete in Q4 2025, this stunning Grade II listed building will offer 153 uniquely crafted apartments; woven into the existing mill and perfect for both first-time buyers and investors. This one-bedroom flat is located on the second floor of the development, with views overlooking Manchester. The unit is 525 sqft and will be a perfect investment. The flat will be warm, contemporary, and finished to a high standard - tall ceilings and windows allow for maximum natural light in every property. Quickly becoming one of Manchester's most popular neighbourhoods. New Islington places you close to the buzzing areas of Ancoats and the famous Northern Quarter. Full of vibrancy, creativity and diversity, it is an exciting time for the area. Perfect for young professionals or families that enjoy city centre living. Contact Orlando Reid today to secure a unit within this historic building in Manchester.

ORLANDO REID

— MANCHESTER —

St Johns Court 19b Quay Street, Manchester, M3 3HN

01616760099

manchester@orlandoreid.co.uk

<https://www.orlandoreid.co.uk/manchester/>

Energy Efficiency Rating		
	Current	Potential
<i>Very energy efficient - lower running costs</i>		
(92 plus) A		
(81-91) B		
(69-80) C		
(55-68) D		
(39-54) E		
(21-38) F		
(1-20) G		
<i>Not energy efficient - higher running costs</i>		
England & Wales	EU Directive 2002/91/EC	