



THE MCPHERSON
DEVELOPMENT
— GOUROCK —

The Duncan

Plot 2

3 Bedroom
Semi-Detached
Home



[View Online](#)

**BOWMAN
REBECCHI**
— ESTATE AGENTS —



Development Plan



THE MCPHERSON
DEVELOPMENT
— GOUROCK —

The Duncan

Plot 2



Floor Plans

Ground Floor

Dining/Kitchen:

5.32m x 3.87m
17'5" x 12'3"

Lounge:

4.39m x 4.58m
14'5" x 15'

First Floor

Master Bedroom:

2.91m x 3.72m
9'7" x 12'2"

Bedroom 1:

2.89m x 3.29m
9'6" x 11'

Bedroom 2:

2.66m x 3.1m
8'9" x 10'2"

Bathroom:

2.33m x 2.1m
7'8" x 6'11"



Ground Floor Plan



First Floor Plan

Elevations



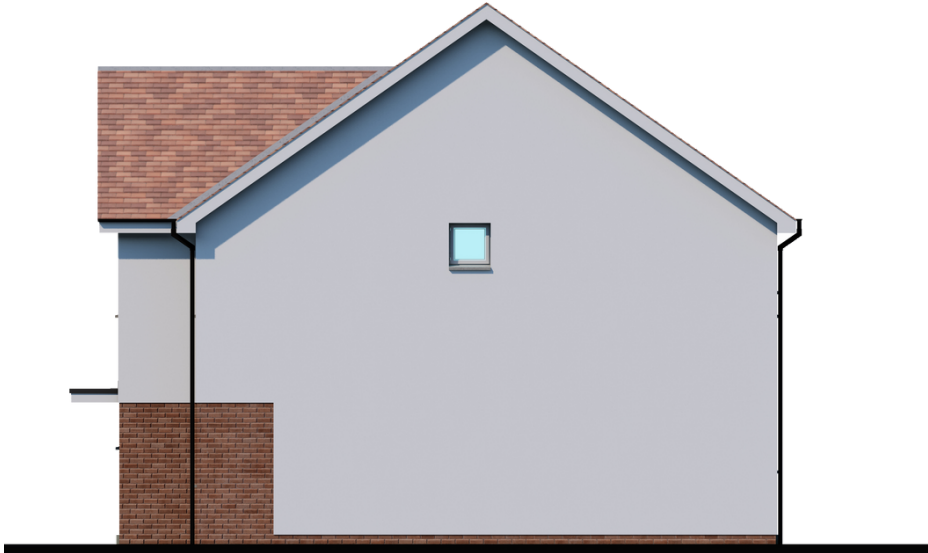
Front Elevation



Rear Elevation



Left Gable Elevation



Right Gable Elevation