



THE MCPHERSON
DEVELOPMENT
— GOUROCK —

The Bailie

Plot 7

3 Bedroom
Semi-Detached
Home



View Online

BOWMAN
REBECCHI
— ESTATE AGENTS —



Development Plan



THE MCPHERSON
DEVELOPMENT
— GOUROCK —

The Bailie

Plot 7



Floor Plans

Ground Floor

Dining/Kitchen:

5.36m x 3.88m
17'7" x 12'9"

Lounge:

4.42m x 4.58m
14'5" x 15'

First Floor

Master Bedroom:

2.95m x 3.72m
9'8" x 12'2"

Bedroom 1:

2.95m x 3.29m
9'8" x 11'

Bedroom 2:

2.72m x 3.1m
8'11" x 10'2"

Bathroom:

2.29m x 2.1m
7'6" x 6'11"



Ground Floor Plan



First Floor Plan

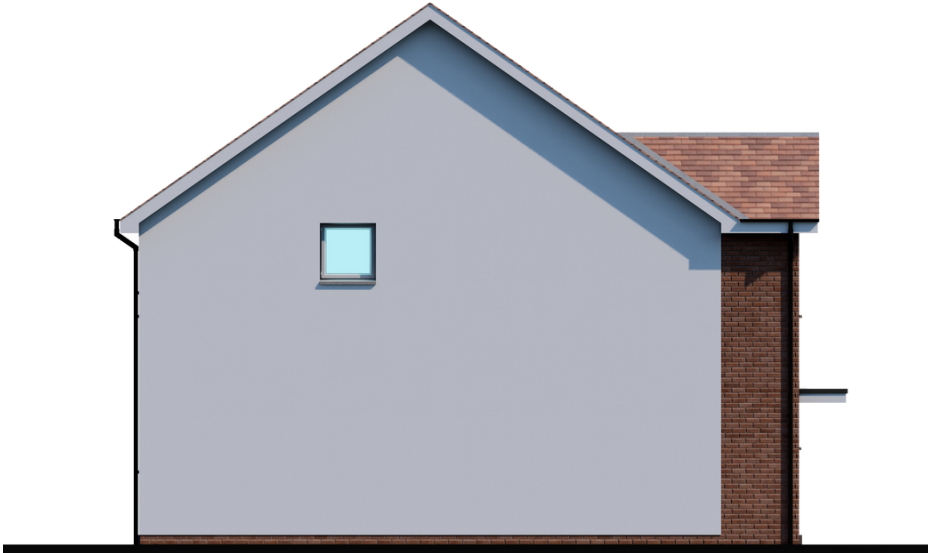
Elevations



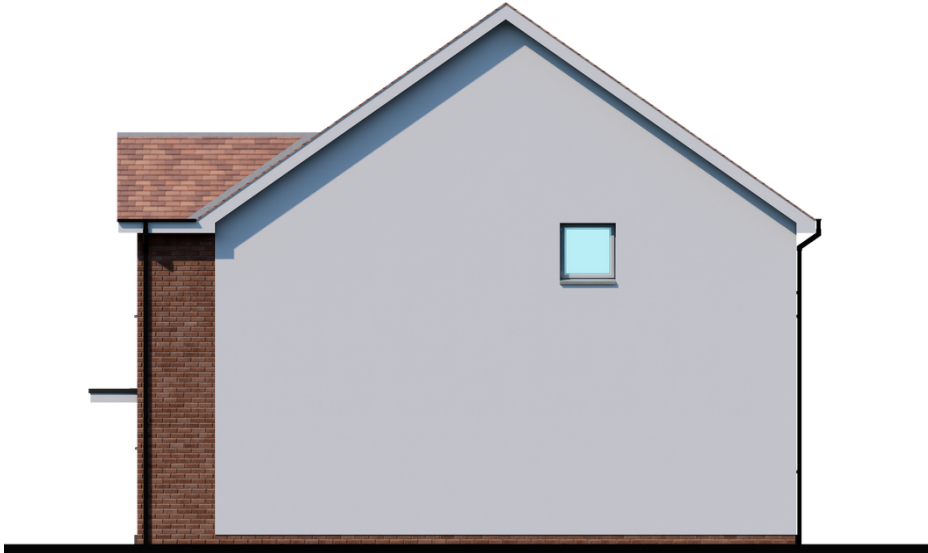
Front Elevation



Rear Elevation



Left Gable Elevation



Right Gable Elevation