

HoldenCopley

PREPARE TO BE MOVED

Fowler Street, Draycott, Derbyshire DE72 3QD

Guide Price £210,000 - £220,000

Fowler Street, Draycott, Derbyshire DE72 3PD

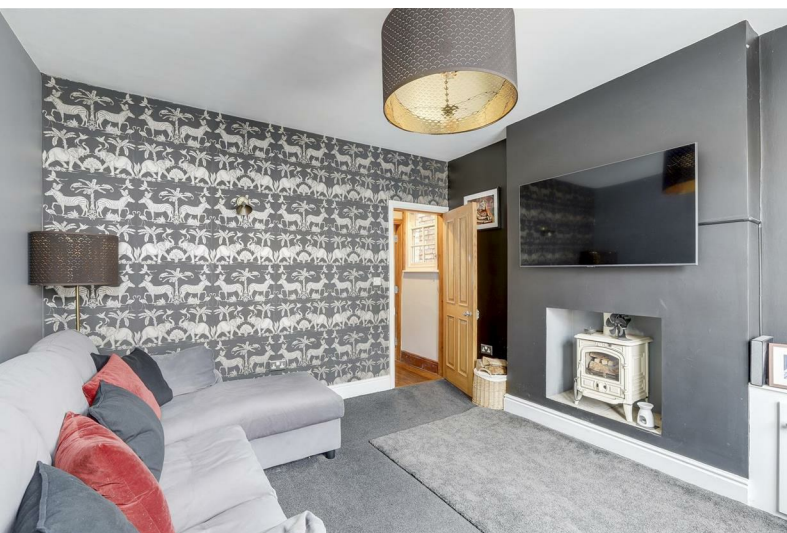


GUIDE PRICE £210,000 - £220,000

IDEAL FOR FIRST TIME BUYERS...

This deceptively spacious and well-presented semi-detached home would make the perfect purchase for a first-time buyer or growing family looking for a property they can move straight into. Situated in the heart of a sought-after village location, the property benefits from being within easy reach of a range of local amenities, great school catchments, shops and fantastic transport links. To the ground floor, the accommodation comprises a bright and cosy living room featuring a multi-fuel burner, a separate dining room with a traditional open fireplace, a W/C, and a well-appointed fitted kitchen with plenty of storage and worktop space. The first floor offers two generously sized bedrooms, serviced by a four-piece bathroom suite, complete with a freestanding roll-top bath and separate shower. The second floor hosts two additional bedrooms, making the layout ideal for families or those needing flexible space for a home office or guest rooms. Outside, the property has on-street parking to the front, while to the rear there is a private, enclosed garden featuring a block-paved patio, a lawn with mature shrubs and trees, a secondary paved seating area with a pergola, and a useful garden shed – perfect for relaxing or entertaining in the warmer months.

MUST BE VIEWED





- Semi-Detached House
- Four Bedrooms
- Well Appointed Fitted Kitchen
- Two Reception Rooms
- Ground Floor W/C
- Four Piece Bathroom Suite
- Private Enclosed Rear Garden
- Well Presented Throughout
- Sought After Village Location
- Must Be Viewed





GROUND FLOOR

Living Room

12'6" x 11'11" (max) (3.83m x 3.65m (max))
The living room has a UPVC double-glazed window to the front elevation, carpeted flooring, a radiator, a recessed chimney breast alcove with a multi-fuel burner, a built-in cupboard and a single door providing access into the accommodation.

Dining Room

12'5" x 11'11" (max) (3.80m x 3.64m (max))
The dining room has a UPVC double-glazed window to the rear elevation, wooden flooring, a radiator, a traditional open fireplace with a decorative surround and a dado rail.

W/C

5'8" x 2'7" (1.74m x 0.81m)
This space has a low level flush W/C, a wash basin with fitted storage and a tiled splashback and wooden flooring.

Kitchen

14'2" x 6'10" (4.34m x 2.09m)
The kitchen has a range of fitted base units, freestanding cooker with an extractor hood, a Belfast sink with a period style mixer tap, an integrated dishwasher, space and plumbing for a washing machine, space for a fridge-freezer, tiled flooring, partially tiled walls, recessed spotlights, UPVC double-glazed windows to the side and rear elevation and a single door providing access out to the garden.

FIRST FLOOR

Landing

15'7" x 8'10" (max) (4.76m x 2.71m (max))
The landing has exposed wooden floorboards, a radiator, feature pendant lighting and provides access to the first floor accommodation.

Master Bedroom

12'6" x 12'0" (max) (3.83m x 3.66m (max))
The main bedroom has UPVC double-glazed windows to the front elevation, exposed wooden floorboards, a radiator, a dado rail and a built-in cupboard.

Bedroom Two

12'5" x 9'0" (max) (3.80m x 2.76m (max))
The second bedroom has a UPVC double-glazed window to the rear elevation, exposed wooden floorboards, a radiator, a dado rail and recessed spotlights.

Bathroom

14'3" x 6'10" (max) (4.36m x 2.10m (max))
The bathroom has a low level flush W/C, a pedestal wash basin, a freestanding roll top bathtub with central taps, a corner fitted shower enclosure with a mains-fed over the head rainfall shower and a hand-held shower, exposed wooden floorboards, a chrome heated towel rail, partially tiled walls, a built-in cupboard, a dado rail, recessed spotlights, an extractor fan and a UPVC double-glazed obscure window to the rear elevation.

SECOND FLOOR

Landing

9'0" x 5'10" (max) (2.76m x 1.79m (max))
The landing has exposed wooden floorboards and provides access to the second floor accommodation.

Bedroom Three

11'0" x 10'10" (max) (3.37m x 3.32m (max))
The third bedroom has a UPVC double-glazed window to the rear elevation, carpeted flooring, a column radiator and a built-in cupboard.

Bedroom Four

11'8" x 8'5" (max) (3.57m x 2.59m (max))
The fourth bedroom has a velux window to the front elevation, carpeted flooring and a built-in cupboard.

OUTSIDE

Front

To the front is on street parking.

Rear

To the rear is a private garden with a block paved patio, a lawn, mature shrubs and trees, a paved patio seating area with a pergola and a shed.

ADDITIONAL INFORMATION

- Electricity – Mains Supply
- Water – Mains Supply
- Heating – Gas Central Heating – Connected to Mains Supply
- Septic Tank – No
- Broadband Speed - Ultrafast - 10000 Mbps (Highest available download speed)
- 10000 Mbps (Highest available upload speed)
- Phone Signal – 3G, 4G & 5G available
- Sewage – Mains Supply
- Flood Risk – No flooding in the past 5 years
- Very low risk of flooding
- Non-Standard Construction – No
- Any Legal Restrictions – No
- Other Material Issues – damp course completed in the dining room March 2023
- Any shared or communal facilities? Alley between number 4 & number 6

DISCLAIMER

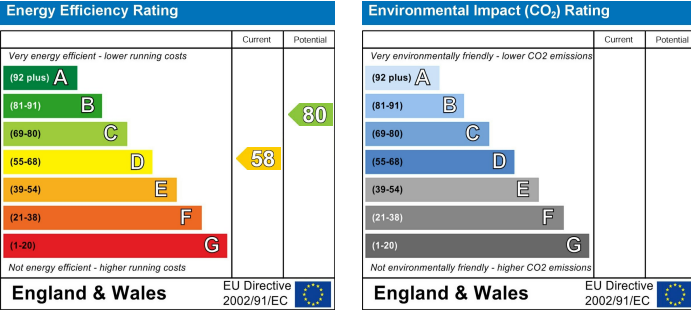
Council Tax Band Rating - Erewash Borough Council - Band A
This information was obtained through the directgov website. HoldenCopley offer no guarantee as to the accuracy of this information, we advise you to make further checks to confirm you are satisfied before entering into any agreement to purchase.

The vendor has advised the following:
Property Tenure is Freehold

Agents Disclaimer: HoldenCopley, their clients and employees I: Are not authorised to make or give any representations or warranties in relation to the property either here or elsewhere, either on their own behalf or on behalf of their client or otherwise. They assume no responsibility for any statement that may be made in these particulars. These particulars do not form part of any offer or contract and must not be relied upon as statements or representations of fact. 2: Any areas, measurements or distances are approximate. The text, photographs and plans are for guidance only and are not necessarily comprehensive. It should not be assumed that the property has all necessary planning, building regulation or other consents and HoldenCopley have not tested any services, equipment or facilities. Purchasers must make further investigations and inspections before entering into any agreement.

Purchaser information -The Money Laundering, Terrorist Financing and Transfer of Funds(Information on the Payer) Regulations 2017(MLR 2017) came into force on 26 June 2017. HoldenCopley require any successful purchasers proceeding with a property to provide two forms of identification i.e. passport or photocard driving license and a recent utility bill or bank statement. We are also required to obtain proof of funds and provide evidence of where the funds originated from. This evidence will be required prior to HoldenCopley removing a property from the market and instructing solicitors for your purchase.

Third Party Referral Arrangements - HoldenCopley have established professional relationships with third-party suppliers for the provision of services to Clients. As remuneration for this professional relationship, the agent receives referral commission from the third-party companies. Details are available upon request.



Fowler Street, Draycott, Derbyshire DE72 3PD

HoldenCopley
PREPARE TO BE MOVED



FLOORPLAN IS FOR ILLUSTRATIVE PURPOSES ONLY

All measurements walls, doors, windows, fittings and appliances, their sizes and locations are an approximate only. They cannot be regarded as being a representation by the seller nor their agent and is for identification only. Not to scale.
© HoldenCopley

0115 8963 699

30 Market Place, Long Eaton, NG10 1LT

longeatonoffice@holdencopley.co.uk

www.holdencopley.co.uk

Agents Disclaimer: HoldenCopley, their clients and employees I: Are not authorised to make or give any representations or warranties in relation to the property either here or elsewhere, either on their own behalf or on behalf of their client or otherwise. They assume no responsibility for any statement that may be made in these particulars. These particulars do not form part of any offer or contract and must not be relied upon as statements or representations of fact. 2: Any areas, measurements or distances are approximate. The text, photographs and plans are for guidance only and are not necessarily comprehensive. It should not be assumed that the property has all necessary planning, building regulation or other consents and HoldenCopley have not tested any services, equipment or facilities. Purchasers must make further investigations and inspections before entering into any agreement.