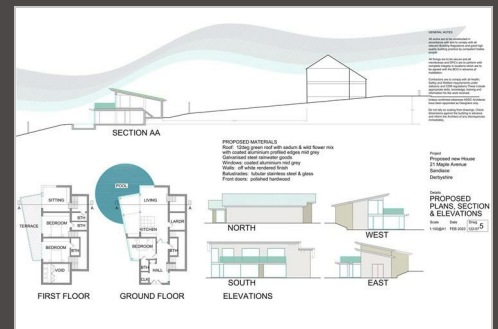


HoldenCopley

PREPARE TO BE MOVED



Maple Avenue, Sandiacre, NG10 5EF

Offers Over £200,000

PLOT OF LAND WITH PLANNING PERMISSION GRANTED...

We are delighted to offer a prime plot of land with planning permission already granted (Planning Reference: ERE/08232/0030, Erewash Borough Council) for the construction of a new 3-4 bedroom dwelling. This exceptional opportunity is perfect for both seasoned developers and those looking to embark on their first project. Whether your goal is to create a bespoke dream home or an investment property, this site offers a solid foundation to bring your vision to life. Located in the vibrant area of Sandiacre, the plot is surrounded by a variety of local amenities, including top-rated schools and convenient shopping facilities. Excellent road and public transport links via the M1 provide easy access to Nottingham, Derby, and the wider region, making it an ideal location for modern living as well as easy access to East Midlands Airport. Don't miss this chance to develop in a sought-after area, combining convenience with the potential for substantial returns.

- Half an Acre Plot Of Land
- Great Investment
- Popular Location
- No Upward Chain
- Four Bedroom Home Development Opportunity - Planning Permission Granted
- Sold As Seen
- Contact For More Information
- Must Be Viewed