

HoldenCopley

PREPARE TO BE MOVED

Conway Street, Long Eaton, Nottinghamshire NG10 2AD

Offers Over £210,000

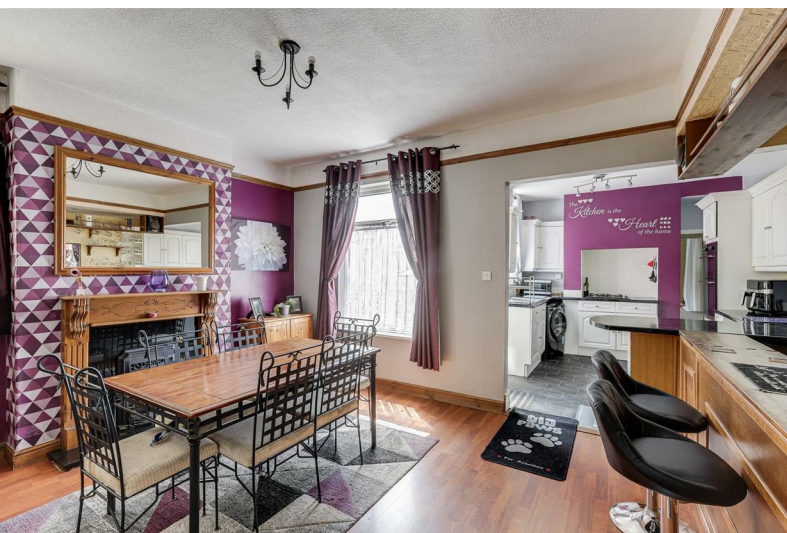
Conway Street, Long Eaton, Nottinghamshire NG10 2AD

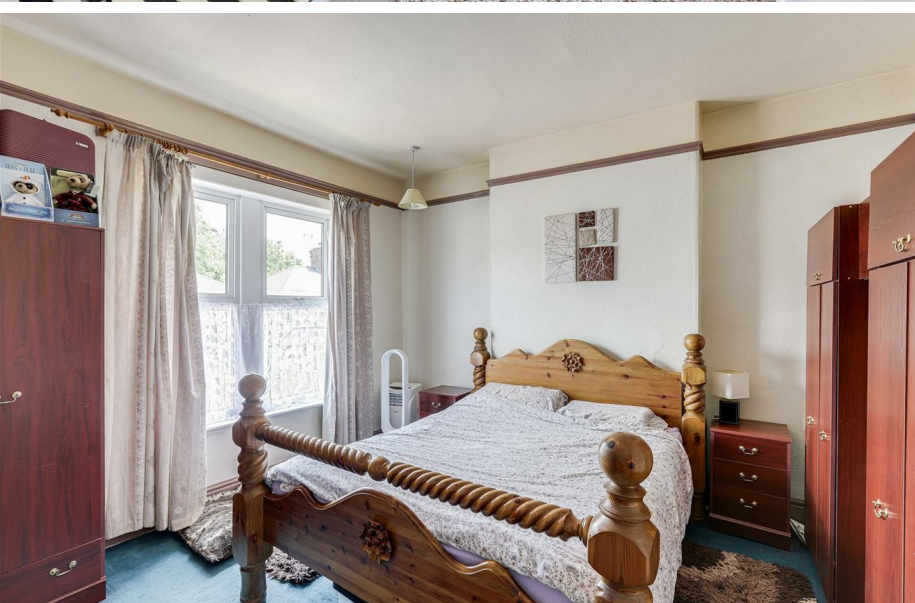


LOCATION LOCATION LOCATION...

This deceptively spacious three-bedroom semi-detached house would appeal to a variety of buyers. Situated in a sought-after location, this property is within close proximity to numerous local amenities, including the scenic Attenborough Nature Reserve, shops, excellent transport links and great school catchments. The ground floor features an entrance hall that leads into two generous reception rooms, providing ample space for relaxation and entertaining. The well-equipped fitted kitchen offers modern appliances and plenty of storage, complemented by a utility room for added convenience. Additionally, a stylish three-piece bathroom suite is located on the ground floor. The first floor boasts three well-proportioned bedrooms, ensuring comfortable accommodation for family or guests. There is also access to the loft, providing additional storage space. Externally, the property offers the availability for off-road parking at the front. The rear of the property features a large, south-facing garden with a lawn, a patio area for outdoor dining, a shed for storage and a greenhouse for gardening enthusiasts. This semi-detached house combines spacious living with an excellent location, making it an ideal choice for a wide range of buyers.

MUST BE VIEWED





- Semi Detached House
- Three Double Bedrooms
- Two Reception Rooms
- Fitted Kitchen
- Utility Room
- Three Piece Bathroom Suite
- Large South Facing Garden
- Close To Local Amenities
- Recently Replaced Roof
- Potential For Off-Road Parking





GROUND FLOOR

Entrance Hall

12'9" x 6'4" (max) (3.91m x 1.95m (max))

The entrance hall has a UPVC double-glazed obscure window to the front elevation, tiled flooring, carpeted stairs, a radiator, coving, a storage cupboard and a single UPVC door providing access into the accommodation.

Living Room

15'2" x 10'10" (max) (4.63m x 3.32m (max))

The living room has a UPVC double-glazed bay window to the front elevation, carpeted flooring, a radiator, a feature fireplace, a picture rail, coving and a ceiling rose.

Dining Room

17'3" x 12'11" (max) (5.26m x 3.96m (max))

The dining room has two UPVC double-glazed window to the rear and side elevation, a radiator, wood-effect flooring, a feature fireplace with a decorative surround, a picture rail, a built-in bar and open access to the kitchen.

Kitchen

10'5" x 9'10" (max) (3.19m x 3.01m (max))

The kitchen has a range of fitted base and wall units with worktops, an integrated double oven, a gas hob, a stainless steel sink with a drainer, space and plumbing for a washing machine, space for a fridge, tile-effect flooring, an extractor fan, a UPVC double-glazed window to the side elevation and a single UPVC door providing access out to the garden.

Utility Room

9'8" x 4'5" (2.97m x 1.35m)

The utility room has a UPVC double-glazed window to the side elevation, tile-effect flooring, a radiator and a wall-mounted boiler.

Bathroom

9'8" x 4'5" (2.97m x 1.36m)

The bathroom has a low level flush W/C, a pedestal wash basin, a fitted panelled bath with a mains-fed shower, tiled flooring and partially tiled walls, a radiator, an extractor fan and a UPVC double-glazed obscure window to the side elevation.

FIRST FLOOR

Landing

7'2" x 3'11" (max) (2.19m x 1.21m (max))

The landing has carpeted flooring, recessed spotlights and provides access to the first floor accommodation.

Master Bedroom

13'8" x 12'9" (max) (4.17m x 3.89m (max))

The main bedroom has a UPVC double-glazed window to the front elevation, carpeted flooring, a radiator and a picture rail.

Bedroom Two

13'0" x 9'9" (max) (3.97m x 2.99m (max))

The second bedroom has a UPVC double-glazed window to the rear elevation, carpeted flooring and a radiator.

Bedroom Three

9'9" x 7'1" (2.98m x 2.17m)

The third bedroom has a UPVC double-glazed window to the rear elevation, a radiator and access to the loft.

OUTSIDE

Front

To the front of the property is the availability for on street parking.

Rear

To the rear of the property is a private south facing garden with a fence panelled boundary, a lawn, a patio, a shed and a greenhouse.

ADDITIONAL INFORMATION

Electricity – Mains Supply

Water – Mains Supply

Heating – Gas Central Heating – Connected to Mains Supply

Septic Tank – No

Broadband – Openreach, Virgin Media

Broadband Speed - Ultrafast- 1000 Mbps (Highest available download speed)

220 Mbps (Highest available upload speed)

Phone Signal – All 3G & 4G, some 5G available

Sewage – Mains Supply

Flood Risk – No flooding in the past 5 years

Low risk of flooding

Non-Standard Construction – No

Any Legal Restrictions – No

Other Material Issues – No

DISCLAIMER

Council Tax Band Rating - Erewash Borough Council - Band A

This information was obtained through the directgov website. HoldenCopley offer no guarantee as to the accuracy of this information, we advise you to make further checks to confirm you are satisfied before entering into any agreement to purchase.

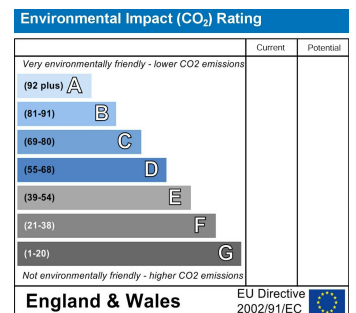
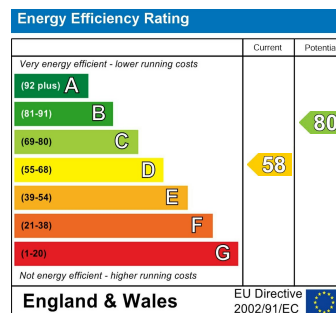
The vendor has advised the following:

Property Tenure is Freehold

Agents Disclaimer: HoldenCopley, their clients and employees I: Are not authorised to make or give any representations or warranties in relation to the property either here or elsewhere, either on their own behalf or on behalf of their client or otherwise. They assume no responsibility for any statement that may be made in these particulars. These particulars do not form part of any offer or contract and must not be relied upon as statements or representations of fact. 2: Any areas, measurements or distances are approximate. The text, photographs and plans are for guidance only and are not necessarily comprehensive. It should not be assumed that the property has all necessary planning, building regulation or other consents and HoldenCopley have not tested any services, equipment or facilities. Purchasers must make further investigations and inspections before entering into any agreement.

Purchaser information -The Money Laundering, Terrorist Financing and Transfer of Funds(Information on the Payer) Regulations 2017(MLR 2017) came into force on 26 June 2017. HoldenCopley require any successful purchasers proceeding with a property to provide two forms of identification i.e. passport or photocard driving license and a recent utility bill or bank statement. We are also required to obtain proof of funds and provide evidence of where the funds originated from. This evidence will be required prior to HoldenCopley receiving a property from the market and instructing solicitors for your purchase.

Third Party Referral Arrangements - HoldenCopley have established professional relationships with third-party suppliers for the provision of services to Clients. As remuneration for this professional relationship, the agent receives referral commission from the third-party companies. Details are available upon request.



Conway Street, Long Eaton, Nottinghamshire NG10 2AD

HoldenCopley
PREPARE TO BE MOVED



FLOORPLAN IS FOR ILLUSTRATIVE PURPOSES ONLY

All measurements walls, doors, windows, fittings and appliances, their sizes and locations are an approximate only. They cannot be regarded as being a representation by the seller nor their agent and is for identification only. Not to scale.
© HoldenCopley

0115 8963 699

30 Market Place, Long Eaton, NG10 1LT

longeatonoffice@holdencopley.co.uk

www.holdencopley.co.uk

Agents Disclaimer: HoldenCopley, their clients and employees are not authorised to make or give any representations or warranties in relation to the property either here or elsewhere, either on their own behalf or on behalf of their client or otherwise. They assume no responsibility for any statement that may be made in these particulars. These particulars do not form part of any offer or contract and must not be relied upon as statements or representations of fact. 2: Any areas, measurements or distances are approximate. The text, photographs and plans are for guidance only and are not necessarily comprehensive. It should not be assumed that the property has all necessary planning, building regulation or other consents and HoldenCopley have not tested any services, equipment or facilities. Purchasers must make further investigations and inspections before entering into any agreement.