

HoldenCopley

PREPARE TO BE MOVED

Beech Avenue, Long Eaton, Derbyshire NG10 2AX

Offers Over £450,000

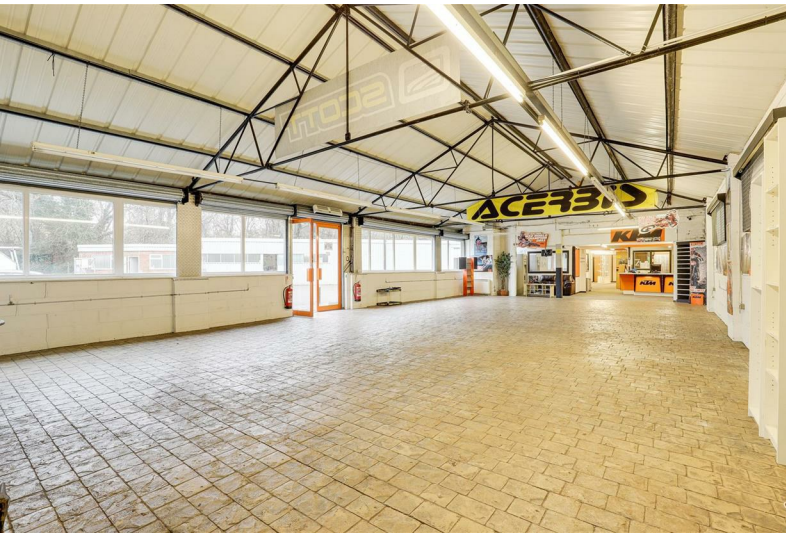
Beech Avenue, Long Eaton, Derbyshire NG10 2AX

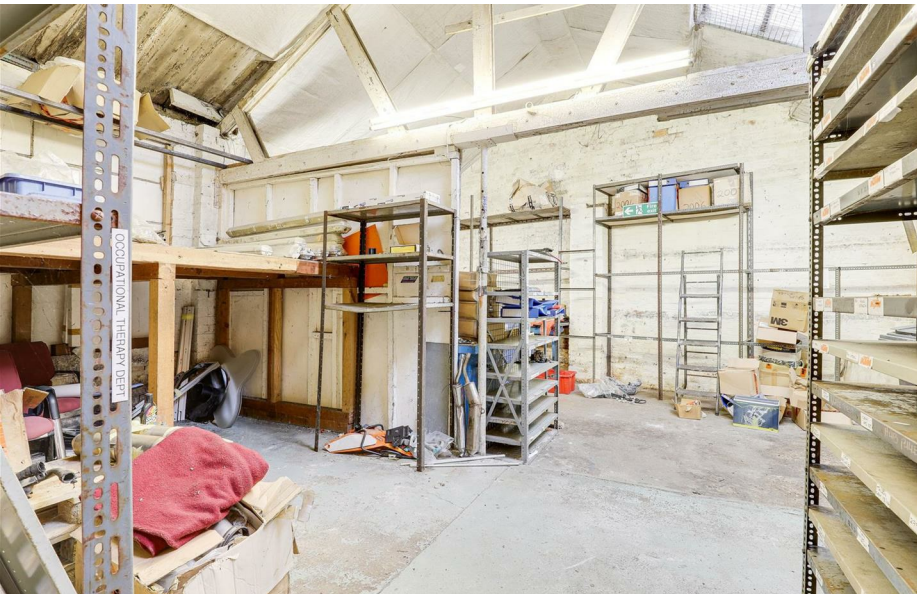


IDEAL INVESTMENT OPPORTUNITY...

An extraordinary opportunity has emerged, inviting you to acquire a substantial freehold industrial unit that boasts an expansive showroom paired with ample storage space. This property has secured planning approval for the development of ten apartments. Planning reference O122/0011. Previously utilised as a bike storeroom, the unit encompasses distinct workshop areas, office spaces, a showroom, and a yard. Situated off Nottingham Road in Long Eaton, this unit is within walking distance of both Long Eaton and the Long Eaton ring road. Its prime location, coupled with versatile, generously proportioned spaces, offers myriad possibilities for utilisation. Moreover, there is potential for subdivision into smaller units, tailored to the preferences of the buyer. Conveniently accessible via J25 of the M1 motorway and the A52, this unit provides direct access to Nottingham and Derby.

MUST BE VIEWED





- Planng Passed For A Development Of Ten Apartments
- Commercial Industrial Units
- Large Showroom
- Plenty Of Storage
- Office Areas
- Yard
- Ideal Investment Opportunity
- Close To Local Amenities
- Popular Location
- Must Be Viewed





ACCOMMODATION

Show Room

53'8" x 27'4" (16.38m x 8.34m)

The show room has double glazed windows to the front elevation, lighting, double doors providing access into the open show room with an archway leading through to the office

Office

7'11" x 11'6" (2.43m x 3.53m)

The office has a counter unit, light points, a window and is open to the store room

Store Room

4'5" x 6'11" (1.36m x 2.12m)

The store room has a worktop, a window to the main show room, lighting and provides ample storage space

Shop

60'5" x 22'8" (18.44m x 6.93m)

The shop has lighting, counters, mail office and lighting

Store Room - First

16'2" x 8'9" (4.95m x 2.69m)

The store room has lighting and stairs providing up to the loft space

Store Room - Second

18'9" x 8'3" (5.73m x 2.54m)

The store room has lighting and stairs up to the loft space

W/C

3'6" x 4'7" (1.09m x 1.41m)

This space has a low-level dual flush W/C, a wall-mounted wash basin and tiled splashback

Store Room

21'7" x 33'1" (6.59m x 10.09m)

The store room has lighting, provides ample storage space and a single door providing access to the yard

Loft Space

60'9" x 16'4" (18.53m x 5.00m)

The loft space has lighting and offers ample storage space

FRONT YARD

WORKSHOPS

83'11" x 19'7" (25.59m x 5.98m)

Workshop One

29'4" x 19'7" (8.96m x 5.99m)

Workshop one has lighting and multiple power points

Workshop Two

29'7" x 19'7" (9.04m x 5.98m)

The second workshop has lighting and multiple power points

Workshop Three

24'9" x 18'8" (7.55m x 5.70m)

The third workshop has lighting, multiple power points and a sliding door to the yard

OFFICE

Kitchen

13'3" x 15'1" (4.05m x 4.61m)

The kitchen has a worktop with a stainless steel sink with a mixer tap, space for a fridge freezer, lighting, multiple power points, a window and a single door providing access to the yard

Office

12'4" x 12'11" (3.76m x 3.95m)

The office has lighting, multiple power points and two windows

W/C

7'8" x 2'9" (2.35m x 0.86m)

This space has a low-level flush W/C, a wash basin and a window

Toilet Block

9'9" x 6'1" (2.98m x 1.87m)

The toilet block has a low-level flush W/C, a urinal, a wash basin, three windows and a single door providing access to the yard

DISCLAIMER

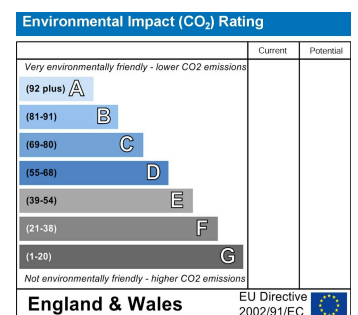
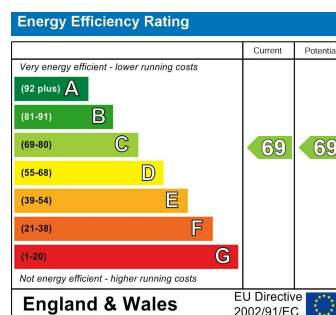
The vendor has advised the following:

Property Tenure is Freehold

Agents Disclaimer: HoldenCopley, their clients and employees I: Are not authorised to make or give any representations or warranties in relation to the property either here or elsewhere, either on their own behalf or on behalf of their client or otherwise. They assume no responsibility for any statement that may be made in these particulars. These particulars do not form part of any offer or contract and must not be relied upon as statements or representations of fact. 2: Any areas, measurements or distances are approximate. The text, photographs and plans are for guidance only and are not necessarily comprehensive. It should not be assumed that the property has all necessary planning, building regulation or other consents and HoldenCopley have not tested any services, equipment or facilities. Purchasers must make further investigations and inspections before entering into any agreement.

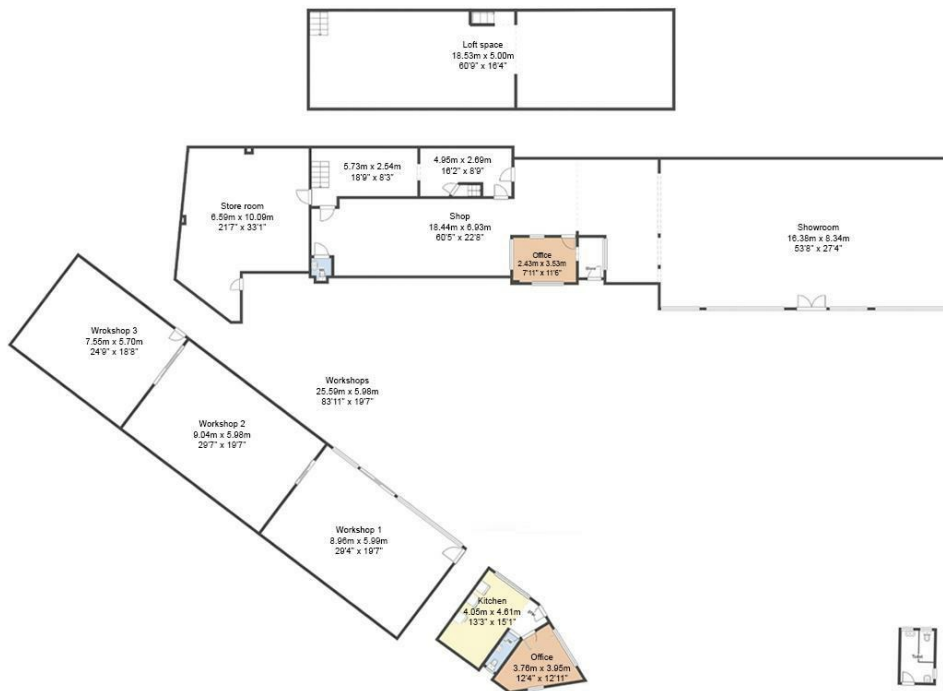
Purchaser information -The Money Laundering, Terrorist Financing and Transfer of Funds(Information on the Payer) Regulations 2017(MLR 2017) came into force on 26 June 2017. HoldenCopley require any successful purchasers proceeding with a property to provide two forms of identification i.e. passport or photocard driving license and a recent utility bill or bank statement. We are also required to obtain proof of funds and provide evidence of where the funds originated from. This evidence will be required prior to HoldenCopley removing a property from the market and instructing solicitors for your purchase.

Third Party Referral Arrangements - HoldenCopley have established professional relationships with third-party suppliers for the provision of services to Clients. As remuneration for this professional relationship, the agent receives referral commission from the third-party companies. Details are available upon request.



Beech Avenue, Long Eaton, Derbyshire NG10 2AX

HoldenCopley
PREPARE TO BE MOVED



FLOORPLAN IS FOR ILLUSTRATIVE PURPOSES ONLY

All measurements walls, doors, windows, fittings and appliances, their sizes and locations are an approximate only. They cannot be regarded as being a representation by the seller nor their agent and is for identification only. Not to scale.
© HoldenCopley

0115 8963 699

30 Market Place, Long Eaton, NG10 1LT

longeatonoffice@holdencopley.co.uk

www.holdencopley.co.uk

Agents Disclaimer: HoldenCopley, their clients and employees: 1: Are not authorised to make or give any representations or warranties in relation to the property either here or elsewhere, either on their own behalf or on behalf of their client or otherwise. They assume no responsibility for any statement that may be made in these particulars. These particulars do not form part of any offer or contract and must not be relied upon as statements or representations of fact. 2: Any areas, measurements or distances are approximate. The text, photographs and plans are for guidance only and are not necessarily comprehensive. It should not be assumed that the property has all necessary planning, building regulation or other consents and HoldenCopley have not tested any services, equipment or facilities. Purchasers must make further investigations and inspections before entering into any agreement.