

Milestone

RESIDENTIAL

CELEBRATING 125 YEARS

22 Church Road, Ashford, TW15 2UY

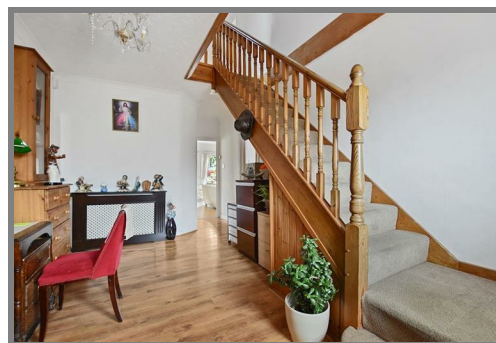
T: 01784 800322

E: enquiries@milestone-residential.com

2 Ashford Crescent, Ashford, Surrey TW15 3ED



Guide Price £620,000 Freehold



An impressive and well presented detached 5-bedroom family home with 2 bathrooms set on a bold corner position in one of Ashford's sort after locations. Delightful, secluded garden and driveway parking for 3 cars and further parking space at rear of the property. Viewings highly recommended

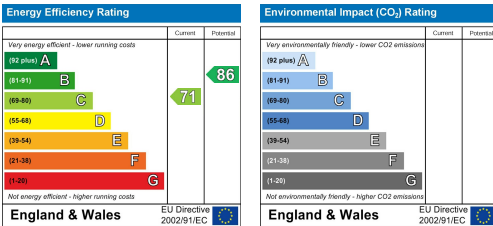
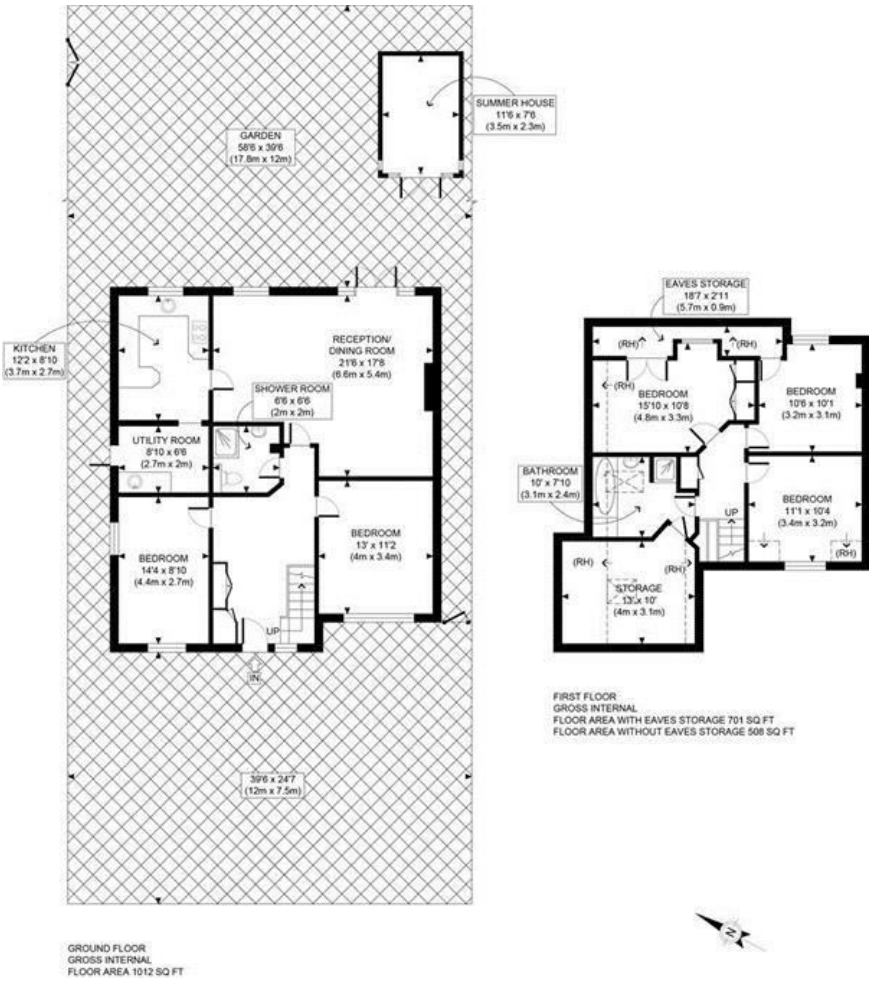
2 Ashford Crescent, Ashford, Surrey TW15 3ED

FOR SALE

This impressive 5 double bedroom detached residence offers spacious and adaptable accommodation throughout with a generous sized receiving hall leading to 2 double bedrooms, bathroom and large lounge/dining room with doors to a delightful and secluded garden. A further door leads to a well fitted kitchen/breakfast room with separate utility room. The first floor provides 3 further good-sized bedrooms and bathroom with door to a spacious storage room with natural light. The front garden provides parking for 3 cars with side access to the splendid and secluded rear garden with rear access a summer house, garden shed and greenhouse. A viewing is highly recommended to appreciate the size of this excellent family home.

LOCATION

Situated in a most desirable and sort area of Ashford just a few minutes' walk of both station and town centre. Ashford Hospital and Heathrow Airport are conveniently placed together with access to the M25 and local motorway system



It is our aim to provide particulars that are both accurate and reliable but they are not guaranteed and would not form part of any offer or contract. Please contact us if you require clarification and we would be happy to assist. Please also note that the appliances and heating system have not been tested and therefore, no warranties can be given as to their condition.