

33 Feltham Road, Ashford, TW15 1DQ



Asking Price £515,000 Freehold



A fantastic opportunity to acquire this semi-detached 4-bedroom property with so much potential to extend, convert into flats, change to a house of multiple occupation (HMO) or refurbish to create a spacious family home. Perfect for development. No Forward Chain.

33 Feltham Road, Ashford, TW15 1DQ

FOR SALE

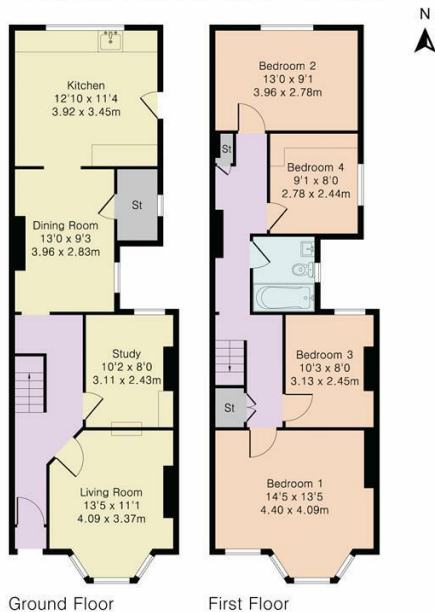
The present spacious accommodation features an entrance hall with doors off to the front reception room, a large study room, dining room and kitchen. The first floor provides 4 good sized bedrooms and a bathroom. There is a secluded rear garden and adjacent land/garden just perfect for extension to the main building, subject to the usual consents. This is a major project with huge development potential.

LOCATION

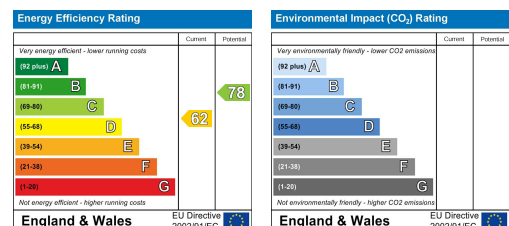
Situated in a great location for local shops, recreation facilities and Bedfont Lakes Country Park. Ashford Town centre and station is also close to hand.



Approximate Gross Internal Area 1266 sq ft – 118 sq m
Ground Floor Area 633 sq ft – 59 sq m
First Floor Area 633 sq ft – 59 sq m



Although Pink Plan Ltd ensures the highest level of accuracy, measurements of doors, windows and rooms are approximate and no responsibility is taken for error, omission or misstatement. These plans are for representation purposes only as defined by RICS code of measuring practice. No guarantee is given on total square footage of the property within this plan. The figure icon is for initial guidance only and should not be relied on as a basis of valuation.



It is our aim to provide particulars that are both accurate and reliable but they are not guaranteed and would not form part of any offer or contract. Please contact us if you require clarification and we would be happy to assist. Please also note that the appliances and heating system have not been tested and therefore, no warranties can be given as to their condition.