

Milestone

RESIDENTIAL

CELEBRATING 125 YEARS

22 Church Road, Ashford, TW15 2UY

T: 01784 800322

E: enquiries@milestone-residential.com

19a Gordon Road, Ashford, TW15 3ES

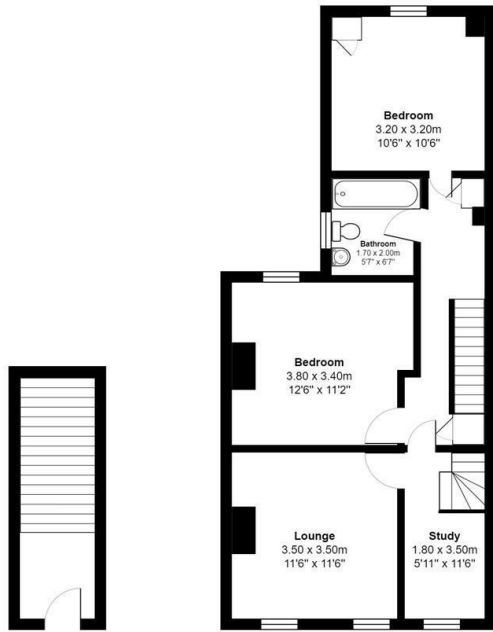
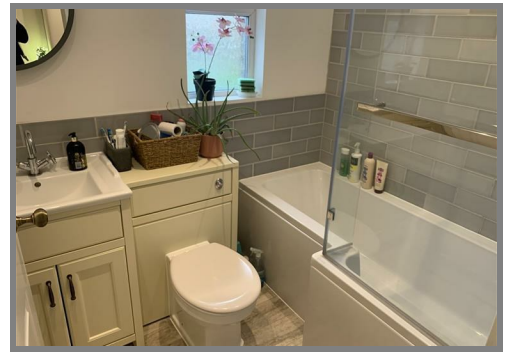


Asking Price £379,950 Leasehold



A beautifully presented 2/3 bedroom conversion flat on first and second floors in this splendid Victorian property with 2 double bedrooms, study/3rd bedroom, a spacious modern Kitchen/Dining room, charming lounge, modern bathroom and secluded private garden. Long Lease.

19a Gordon Road, Ashford, TW15 3ES



Ground Floor Entrance

Energy Efficiency Rating		Current	Potential
Very energy efficient - lower running costs			
(92 plus)	A		
(81-91)	B		
(69-80)	C		
(55-68)	D		
(39-54)	E		
(21-38)	F		
(1-20)	G		
Not energy efficient - higher running costs			
		75	79
England & Wales			
	EU Directive 2002/91/EC		

Environmental Impact (CO ₂) Rating		Current	Potential
Very environmentally friendly - lower CO ₂ emissions			
(92 plus)	A		
(81-91)	B		
(69-80)	C		
(55-68)	D		
(39-54)	E		
(21-38)	F		
(1-20)	G		
Not environmentally friendly - higher CO ₂ emissions			
England & Wales			
	EU Directive 2002/91/EC		

It is our aim to provide particulars that are both accurate and reliable but they are not guaranteed and would not form part of any offer or contract. Please contact us if you require clarification and we would be happy to assist. Please also note that the appliances and heating system have not been tested and therefore, no warranties can be given as to their condition.