

**1 Fifehead Close, Ashford, Surrey TW15 3SD**



**Asking Price £820,000 Freehold**



**A delightful and recently extended 4/5 bedroom detached modern house set in a select cul de sac position of just 7 detached properties adjoining the grounds of Ashford Manor Golf Course**



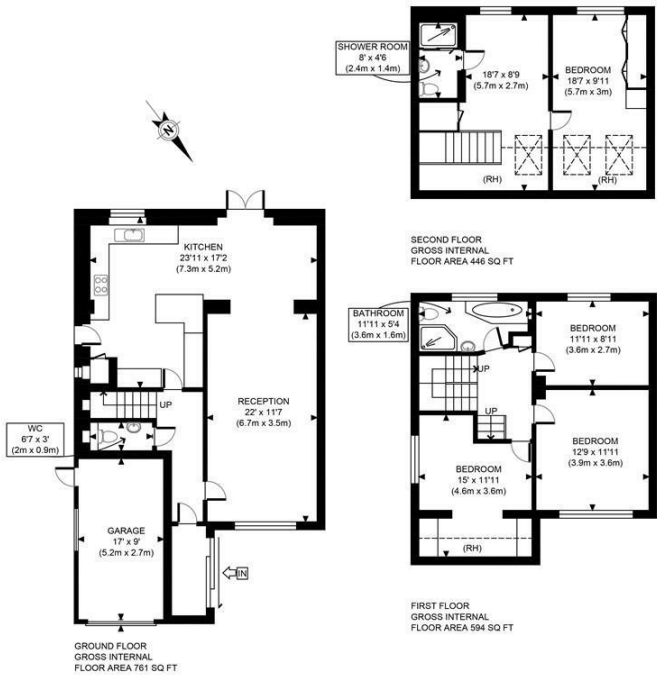
1 Fifehead Close, Ashford, Surrey TW15 3SD

FOR SALE

A beautifully presented modern detached 4/5 double bedroom family home featuring an enclosed porch leading to a receiving hall with cloakroom and access to a splendid open plan living area with herringbone flooring and a stunning fitted kitchen/family room having double doors to a secluded garden. The first floor provides 3 double bedrooms and luxury family bathroom and the second with 2 further double rooms and shower room. With an integral garage and off road parking a viewing is highly recommended to appreciate this fine home.

LOCATION

Quietly situated in a highly sought after cul de sac of just 7 detached properties within close proximity of the town centre and station. The A308 is nearby too giving quick access to Sunbury and M3 together with Staines, the River Thames and the M25.



APPROX. GROSS INTERNAL FLOOR AREA WITH GARAGE 1954 SQ FT / 182 SQM  
APPROX. GROSS INTERNAL FLOOR AREA WITHOUT GARAGE 1801 SQ FT / 167 SQM  
Disclaimer: Floor plan measurements are approximate and are for illustrative purposes only.  
While we do not doubt the floor plan accuracy and completeness, you or your advisors should conduct a careful, independent investigation of the property in respect of monetary valuation

Fifehead Close  
24/09/22  
photoplan

Energy Efficiency Rating			Environmental Impact (CO <sub>2</sub> ) Rating		
Very energy efficient - lower running costs	Current	Potential	Very environmentally friendly - lower CO <sub>2</sub> emissions	Current	Potential
(92 plus) A			(92 plus) A		
(81-91) B			(81-91) B		
(69-80) C			(69-80) C		
(55-68) D			(55-68) D		
(39-54) E			(39-54) E		
(21-38) F			(21-38) F		
(1-20) G			(1-20) G		
Not energy efficient - higher running costs			Not environmentally friendly - higher CO <sub>2</sub> emissions		
England & Wales	EU Directive 2002/91/EC		England & Wales	EU Directive 2002/91/EC	

It is our aim to provide particulars that are both accurate and reliable but they are not guaranteed and would not form part of any offer or contract. Please contact us if you require clarification and we would be happy to assist. Please also note that the appliances and heating system have not been tested and therefore, no warranties can be given as to their condition.