



R B WALTERS
ESTATE AGENTS



R B WALTERS
ESTATE AGENTS

*Mildenhall Way , Kingsway, Gloucester,
Gloucestershire, GL2 2DH.*

£300,000

Positioned in a quiet part of Mildenhall Way and with no passing traffic at all this spacious and well presented town house offers plenty of flexibility for the buyer as there are two bedrooms on the ground floor as well as a shower room which could be ideal for an older family member who cannot manage stairs.

The accommodation is set out across three floors with the ground floor also having a utility room which could be converted to a further kitchen if needed to provide completely independent living. The first floor has a kitchen/diner and a living room whilst the top floor has the master bedroom with ensuite and a further bedroom and bathroom.

Outside the rear garden offers a good degree of privacy and has a bar area ideal for entertaining friends and family. There is parking directly in front of the house as well as further space in front of the garage.

Services

Mains Water (metered)

Mains Drainage

Mains Gas Central Heating

Mains Electric

Full Fibre Broadband Available

Entrance Hall

Bathroom

8' 1" x 2' 9" (2.46m x 0.84m)

Utility Room

8' 6" x 5' 11" (2.59m x 1.80m)

Bedroom

12' 0" x 7' 9" (3.65m x 2.36m)

Bedroom

8' 5" x 8' 5" (2.56m x 2.56m)

First Floor Landing

Living Room

15' 2" x 12' 2" (4.62m x 3.71m)

Kitchen/Diner

14' 9" x 8' 6" (4.49m x 2.59m)





Second Floor Landing

Bedroom

12' 0" x 11' 1" (3.65m x 3.38m)

Ensuite

7' 7" x 3' 3" (2.31m x 0.99m)

Bedroom

14' 9" x 8' 7" (4.49m x 2.61m)

Bathroom

6' 9" x 5' 5" (2.06m x 1.65m)

Outside

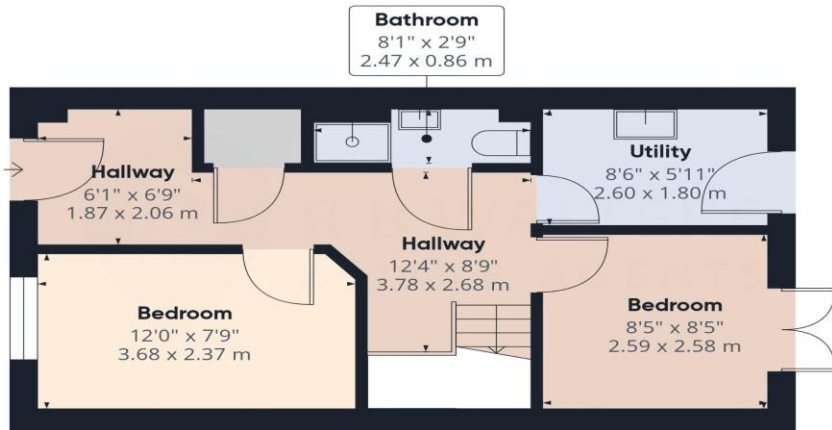
Parking for Two Cars

Garage

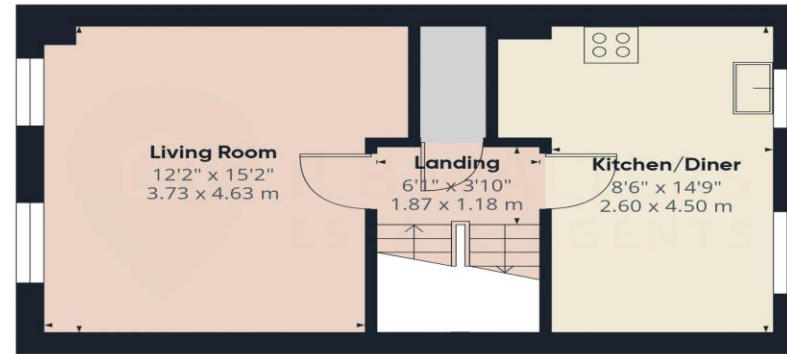
17' 0" x 8' 0" (5.18m x 2.44m)

Rear Garden





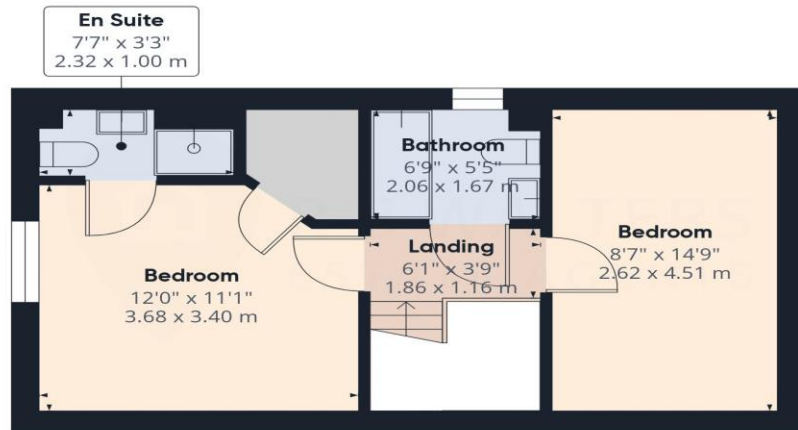
Ground Floor Building 1



Floor 1 Building 1

Approximate total area⁽¹⁾

1262 ft²
117 m²



Floor 2 Building 1



Ground Floor Building 2

(1) Excluding balconies and terraces

Calculations reference the RICS IPMS 3C standard. Measurements are approximate and not to scale. This floor plan is intended for illustration only.

GIRAFFE360